



Spotted

Napoli pilot

Organisation: Comune di Napoli

closing requisite selection for NAPOLI

via Diocleziano 330, Napoli July 5th 2022



Co-financed by the Connecting Europe
Facility of the European Union

The contents of this publication are the sole responsibility of SPOTTED consortium
and do not necessarily reflect the opinion of the European Union

March, 2nd

www.cef-spotted.eu

Identification of requirements

Activities and deliverables

List of stakeholders
Dedicated workshops
Reporting
Wrap up



Co-financed by the Connecting Europe
Facility of the European Union

The contents of this publication are the sole responsibility of SPOTTED consortium
and do not necessarily reflect the opinion of the European Union



stakeholders identification

Institutions & local government levels

Environmental protection agencies

Citizens, Local groups/national organizations

Academic departments, climate labs, linked projects

Main topic on landscape values preservation (academic and institutions)

Main topic environmental compromission (citizens, local groups)

Main topic maintenance and monitoring of green capital*

*using european terminology as stressed in Milano workshops



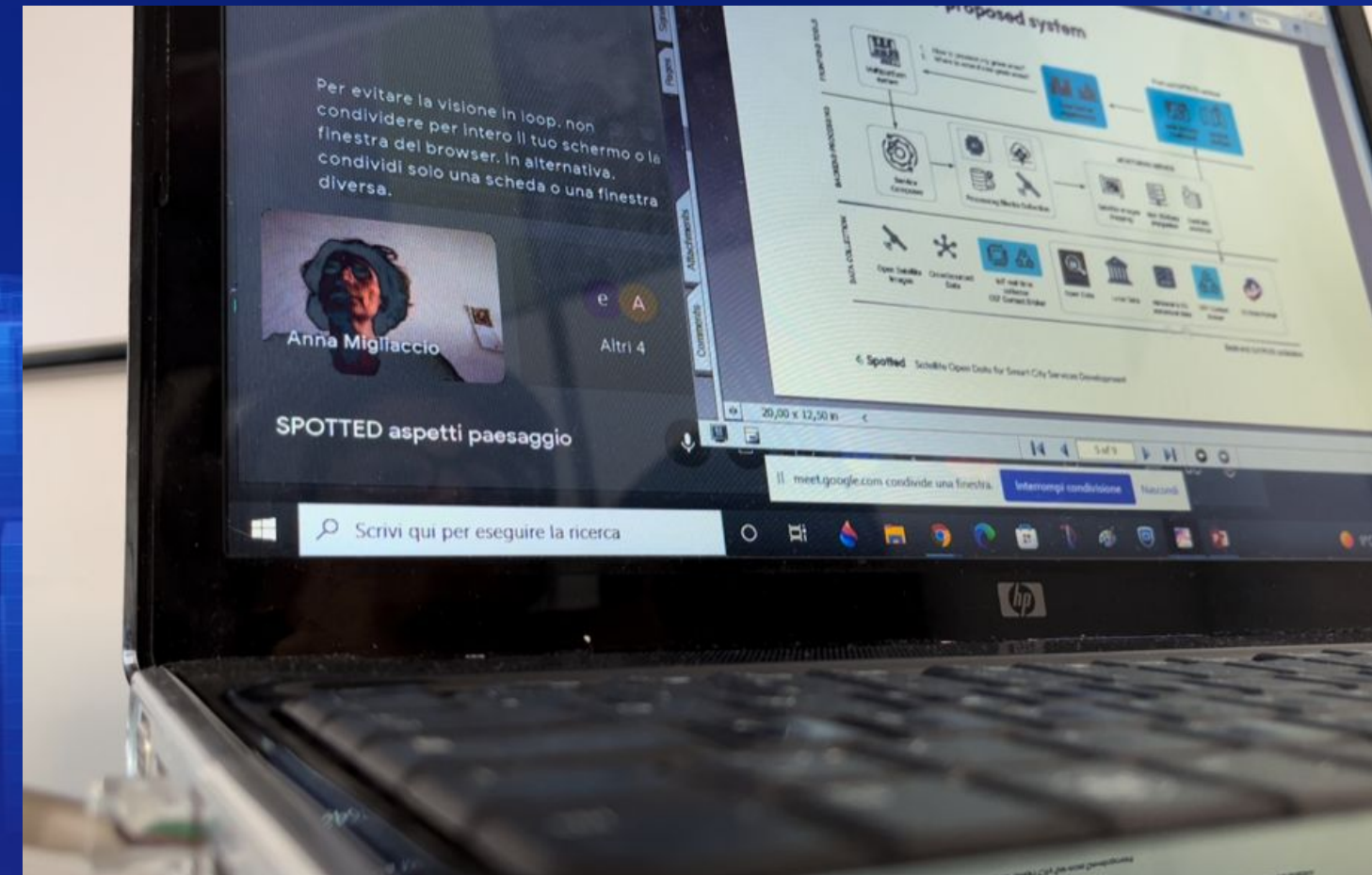
1. stakeholders workshops

Institutions & local government levels

**Heritage & landscape Preservation Agency (Soprintendenza BAP)
Comune di Napoli, landscape transformations authorization process**

Main topic
landscape values preservation

a new protection plan released
emerging specific requests:
how to:
Detect features
Monitor soil loss
outline green capital morphology



Institutions & local government levels

Comune di Napoli, landscape transformations authorization process Heritage & landscape Preservation Agency (Soprintendenza BAP)

Main topic
landscape values preservation

a new protection plan released. Requests:

how to:

detect features (tuff ridges, woodland quality,
monumental trees, residual agriculture restoration)

Spot technical compromises (forgotten antennas, other plants)

Monitor soil loss trends & places – access temporal past data

fisiognomic identification of green areas, morphology of terrain and plants, height
of trees – a morphologic classification to assess landscape features

Detect pioneering green on brown areas



2. stakeholders workshops

Institutions & local government levels

**Heritage & landscape Preservation Agency (Soprintendenza BAP)
Comune di Napoli, environmental monitoring and controls**

Main topic

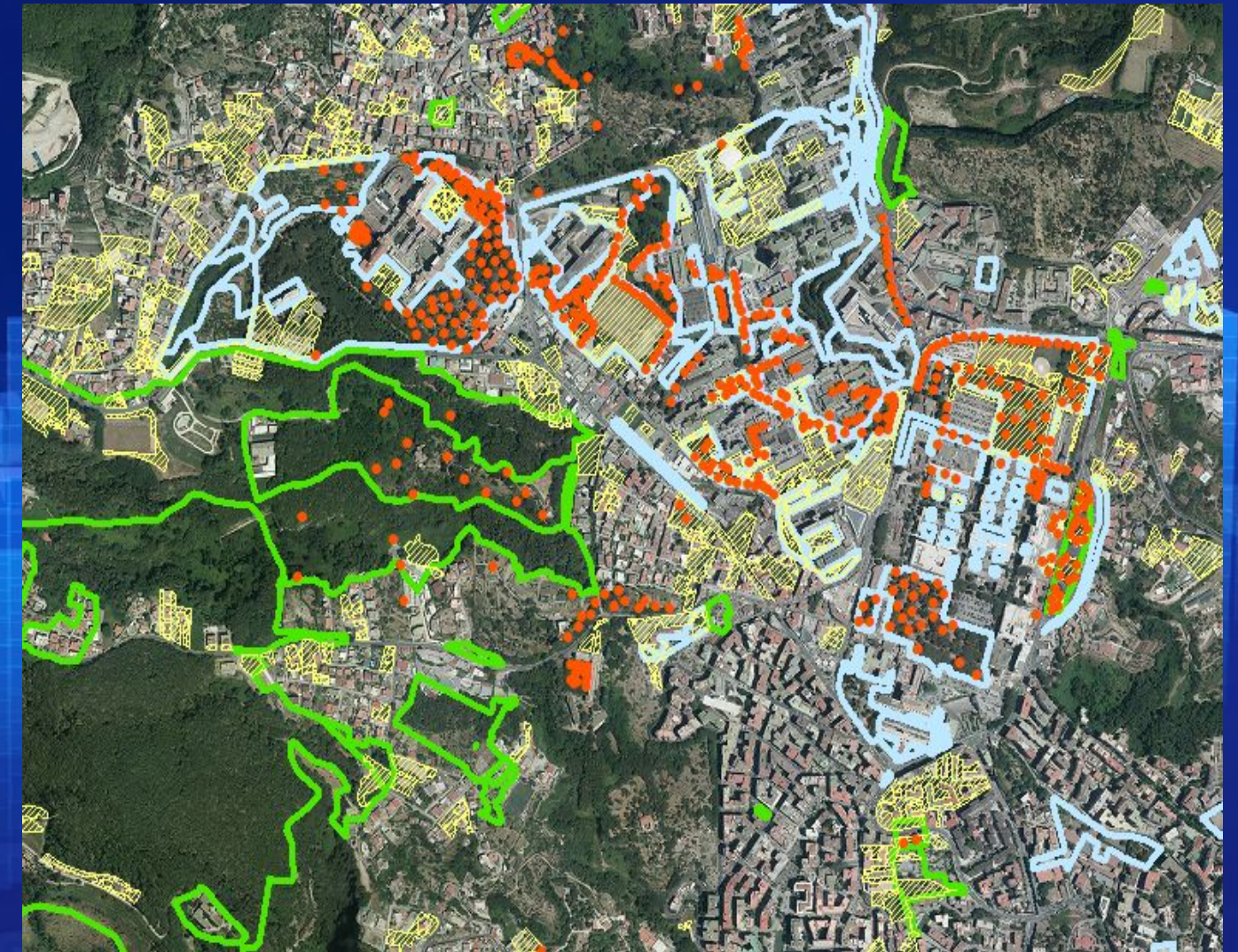
Permeability, hydrological balance,
environmental assessment

Guidelines for environmental assessment

Requests, how to:

Monitor soil permeability,
retrieve historic data

Soil sealing processes and soil loss



3. stakeholders workshops

Citizens, Local groups

**Comitato Civico Frullone S.Rocco e dintorni
Parco delle colline di napoli**

Context: hills around the city, residual agriculture,
Woodland, waterways

Fruition, social use

how to:

- Spot waste and compromissions
- Control hydrogeological risk
- Monitor green health and safe fruition
- Invest in education and social activities



4. stakeholders workshops

Citizens, Local groups

Zappa social

Main topic:
Fruition, social use

how to:
Spot waste and compromissions
detect and re-use neglected areas
Invest in education and social activities



Co-financed by the Connecting Europe
Facility of the European Union

The contents of this publication are the sole responsibility of SPOTTED consortium
and do not necessarily reflect the opinion of the European Union



Citizens, Local groups

Zappa social

Main topic:
Fruition, social use

The context:
Urban fringes, unauthorized and incoherent settlements, shortage of urban services

Identify neglected areas, assess (amatorial) agricultural potential, re use
Retrace historical tracks, plan and prepare for site fruition
Invest in environmental education, waste management
and social activities



5. stakeholders workshops

Academic labs, linked projects

Climate LAB, Clarity, Knowing

Main topic:
Climate adaptation measures
interactions between impacts and risks
of climate change, mitigation pathways
and adaptation strategies.

how to:
Assess green capital consistency
and usability
Cross-monitoring damage due to drought
and floods
Data for modeling Climate adaptation

Workshop
Schools for Collective Climate Action

La scuola come spazio collettivo per adattarsi al cambiamento climatico
a cura di Maria Pia Amore e Cristina Visconti
docenti proponenti M. Losasso, M. F. Palestino

L'attività si inserisce tra quelle previste dal "Protocollo d'intesa di collaborazione scientifica nell'ambito di azioni di Public Engagement in attuazione del Piano Strategico Metropolitan di Napoli e della connessa strategia Ossigeno Bene Comune", nato dall'accordo tra DIARC e CMN (Città Metropolitana di Napoli) e collegata al LAC_NA (Laboratorio di azione per il clima Napoli), attivo nell'ambito della ricerca OCCUPY CLIMATE CHANGE!

Il Workshop si configura come sperimentazione progettuale pilota per l'adattamento e la riconfigurazione di spazi aperti di pertinenza di istituti scolastici inseriti nel contesto urbano storico. Fuoco della sperimentazione sono cinque istituti con superfici perimetrali contigue, da offrire a usi collettivi e da ripensare in una logica adattiva per riequilibrare gli effetti dell'ondata di calore urbano.

La scelta del caso applicativo ricade nell'ambito urbano compreso tra Piazza Dante, Piazza del Gesù e Piazza San Domenico, soglia del centro antico, già all'attenzione degli studi condotti per il Grande Progetto Unesco. Obiettivo è mitigare l'aumento delle temperature valorizzando forma urbis, qualità insediativa e caratteristiche dei materiali costruttivi.

L'attività proposta, accompagnata da riflessioni sugli effetti urbani del metabolismo climatico, mira a fare sintesi tra criteri e metodologie del progetto ambientale e aspetti della composizione architettonica e urbana per integrare in un'unica esperienza diversi aspetti del progetto di Architettura.

15/22
02-2021

CREDITI FORMATIVI
Il workshop, per complessivi **3 CFU**, è indirizzato agli studenti del quarto e quinto anno dei Corsi di Laurea SUE, MAPA e PTUPA, ma è aperto anche agli studenti al terzo anno dei CdL triennali e del corso SUE per l'acquisizione di **1 CFU**.

Il workshop, articolato attraverso contributi teorici mirati e attività laboratoriali individuali e di gruppo, è strutturato in quattro incontri di 4 ore ciascuno (15-18 febbraio ore 9-13) e cui vanno aggiunte le ore di lavoro pomeridiano e le giornate del 19, 20 e 21 febbraio che saranno dedicate ad elaborare il prodotto da consegnare il 22 febbraio. Agli studenti del terzo anno è offerto 1 CFU per la partecipazione alle

LAB
CLIMATE ACTION

Clarity ABOUT PARTNERS NEWSROOM DOWNLOADS LINKS CONTACT

Integrated Climate Adaptation Service Tools for Improving Resilience Measure Efficiency

ANAL ECO-SYSTEM OF CLOUD BASED CLIMATE SERVICES TO CALCULATE AND PRESENT THE EXPECTED EFFECTS OF CC-INDUCED AND -AMPLIFIED HAZARD LEVEL OF RISK, VULNERABILITY AND IMPACT FUNCTIONS.

onstration cases will showcase CLARITY climate services in different climatic, regional, infrastructure and hazard contexts in Italy, Sweden, Austria and the Netherlands, focusing on the planning and implementation of urban infrastructure development projects.

6. stakeholders workshops

Re-plantation strategy 2022 -2025

Citta Metropolitana, Comune di Napoli

Main topic:

Trees planting strategy – value 5.536.606 eu

Site selection

Progress monitoring

Feed data to Climate adaptation strategies

Social accounting and social equity

(statistics indicators, demography, real estate)



Co-financed by the Connecting Europe
Facility of the European Union

The contents of this publication are the sole responsibility of SPOTTED consortium
and do not necessarily reflect the opinion of the European Union



Re-plantation strategy 2022 -2025

Citta Metropolitana, Comune di Napoli

The city lacks a Green Plan and modern Guidelines to implement it
Trees census is obsolete

How to:

Upgrade present information, create a monitoring dashboard

Implement a data driven site-selection and species selection for tree planting

Monitor and account to citizens on tree planting and tree substitution activities, to achieve equal territorial distribution

produce DATA to be used in modeling Climate adaptation strategies



7. stakeholders workshops

local government levels

Comune di Napoli and Città Metropolitana Maintenance issues

Strategie di adattamento – spazi urbani

Main topic:
Maintenance
Compromissions

how to:
detect features
Spot waste and compromissions
manage human resources
Invest in education activities

The poster features the following content:

- Logos:** Istituto Tecnico Statale per Geometri "G.B. DELLA PORTA - G. PORZIO" NAPOLI and Comune di Napoli.
- Text:** P.C.T.O. 2021-2022, Percorsi per le Competenze Trasversali e per l'Orientamento con il comune di Napoli.
- Section Header:** IL TEAM
- Team Members:**
 - prof. Alfonso Nunziata:** Funzione Strumentale P.C.T.O., I.T.G. Della Porta-Porzio. alfonso.nunziata@itgdellaporta-porzio.edu.it
 - arch. Mauro Forte:** Tutor Aziendale, Comune di Napoli. mauro.forte@comune.napoli.it
 - arch. Francesca Pignataro:** responsabile SIT sistema Informativo Territoriale Comune di Napoli. francesca.pignataro@comune.napoli.it
 - arch. Giuliana Langella:** Servizi Attività Tecniche, Terza Municipalità Comune di Napoli. giuliana.langella@comune.napoli.it
 - arch. Ludovica Bucci de Santis:** Servizi Attività Tecniche, Nona Municipalità Comune di Napoli. ludovica.bucci@comune.napoli.it



Co-financed by the Connecting Europe
Facility of the European Union

The contents of this publication are the sole responsibility of SPOTTED consortium
and do not necessarily reflect the opinion of the European Union



local government levels

Comune di Napoli and Città Metropolitana Maintenance issues

Main topic:
Maintenance
Compromissions

how to:

detect features – mapping soil /pavement in detail for climate adaptation strategies

assess flowerbed height and composition to provide operational teams work
Detect tempestively drought problems

Detect waste and monitoring waste re-presentation timeframe, for optimal management of human resources

Implement new data & technologies for educational involvement of surveyors

Strategie di adattamento –



8. stakeholders workshops

Local institutions, citizen participation

Regione Campania, Comune di Napoli

Main topics:

Urban planning

Urban regeneration

Landscape preservation

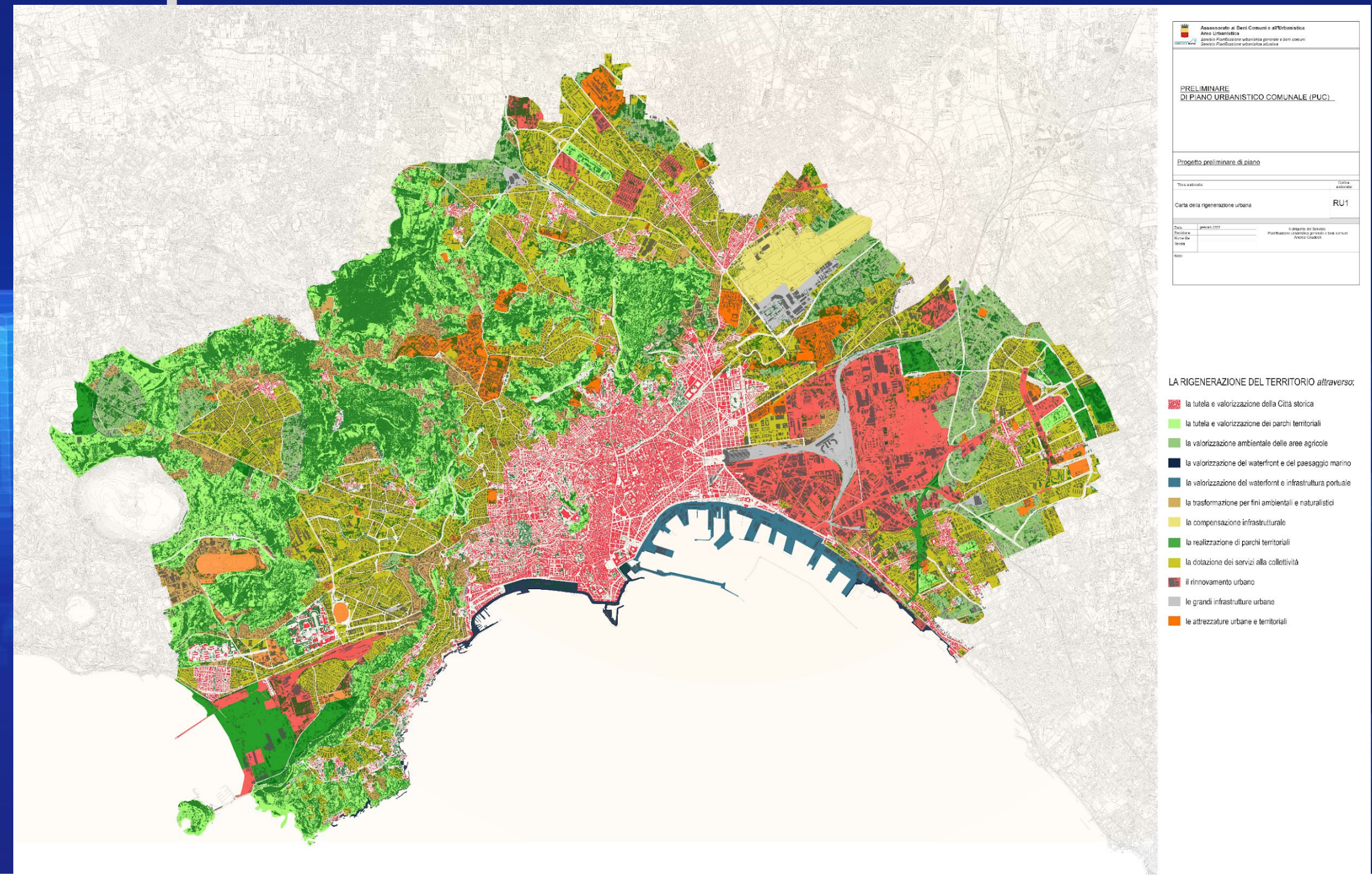
PUC Urban plan drivers:

Produce new soil

Connect natural residual areas

drive to a safe & sustainable city

Equity in distribution of resources



Co-financed by the Connecting Europe
Facility of the European Union

The contents of this publication are the sole responsibility of SPOTTED consortium
and do not necessarily reflect the opinion of the European Union



9. stakeholders workshops

Development agencies

Invitalia

Land reclamation
Urban planning
Development program
Landscape design*



*The International contest winner:

Nature, agriculture, thermal wellness mix in this site: the NATURAL PARK builds an ecological network that links the coast to the hills, the PRODUCTIVE WOOD restores cultivation of ancient botanic autoctonous species, the URBAN PARK mixes settlements and facilities . Circular clearings exaltate industrial archeological monuments and thermal landmarks

Site selection, reclamation & renaturalization monitoring



Research strategy

Comune di Napoli Focus group

areas:

Urban planning
Environmental monitoring
Protected areas authorization processes
Green in urban area implementation
Facilities and social equity
Maintenance resources

external

Heritage and environmental protection and planning agency
Bagnoli Coroglio development agency
Parco delle Colline management
DIARC academic institutions

Local groups

PLANNING

Focus
group

Citizen involvement
experiences

Web page



Research strategy / assessment

Technology assessment

- How can we use the context broker facility?

- we could make use of Napoli ESRI portal infrastructure to publish maps

- Do we need site-specific technical meetings?

Data repository

must we produce a data assessment, and specific metadata?

do we need to acquire detailed satellite data to implement some requisite?

Context
broker

ESRI

imagery

metadata



Research strategy / analysis, indexes

Technical issues

- We must define some deliverables:

- Update of landuse coverage

- Soil loss map

- NDVI map data, other indexes

- Elements for Soil capabilities assesment

- STRESS MAPS after extreme climate events

- Raster, vector?

- Next steps

NDVI

classification

Temporal
series

Roles



close up on requisites from workshop and meetings held in NAPOLI

outcomes from SPOTTED are seen as
a relevant support in the Administration community

specific elements to be detected and mapped:

- Ancient tracks
- Residual agricultural activities
- Antennas, small forgotten industrial plants
- Natural monuments (trees, tuff cliffs)
- green morphology
- Microfloods events
- Small parcels in the city center

support to management issues

Measure, assess plants health, optimal site selection

Planning and safety

DATA and INFO to connect with climate change strategies & hydrogeological risk



chiusura requisiti emersi dai workshop/meeting di NAPOLI

i possibili risultati di SPOTTED sono visti come un significativo
supporto alle attività dell'Amministrazione

individuazione di elementi da riconoscere e mappare:

- antichi percorsi
- residui di attività agricola storica da recuperare
- Antenne comunicazioni, elementi ex-industriali dispersi sul territorio
- monumenti naturali (alberature, pareti rocciose, incisioni acque)
- assetto morfologico del capitale naturale
- rilevazione microallagamenti a valle di eventi meteorici estremi
- mappatura dei giardini 'nascosti' nel tessuto urbano storico

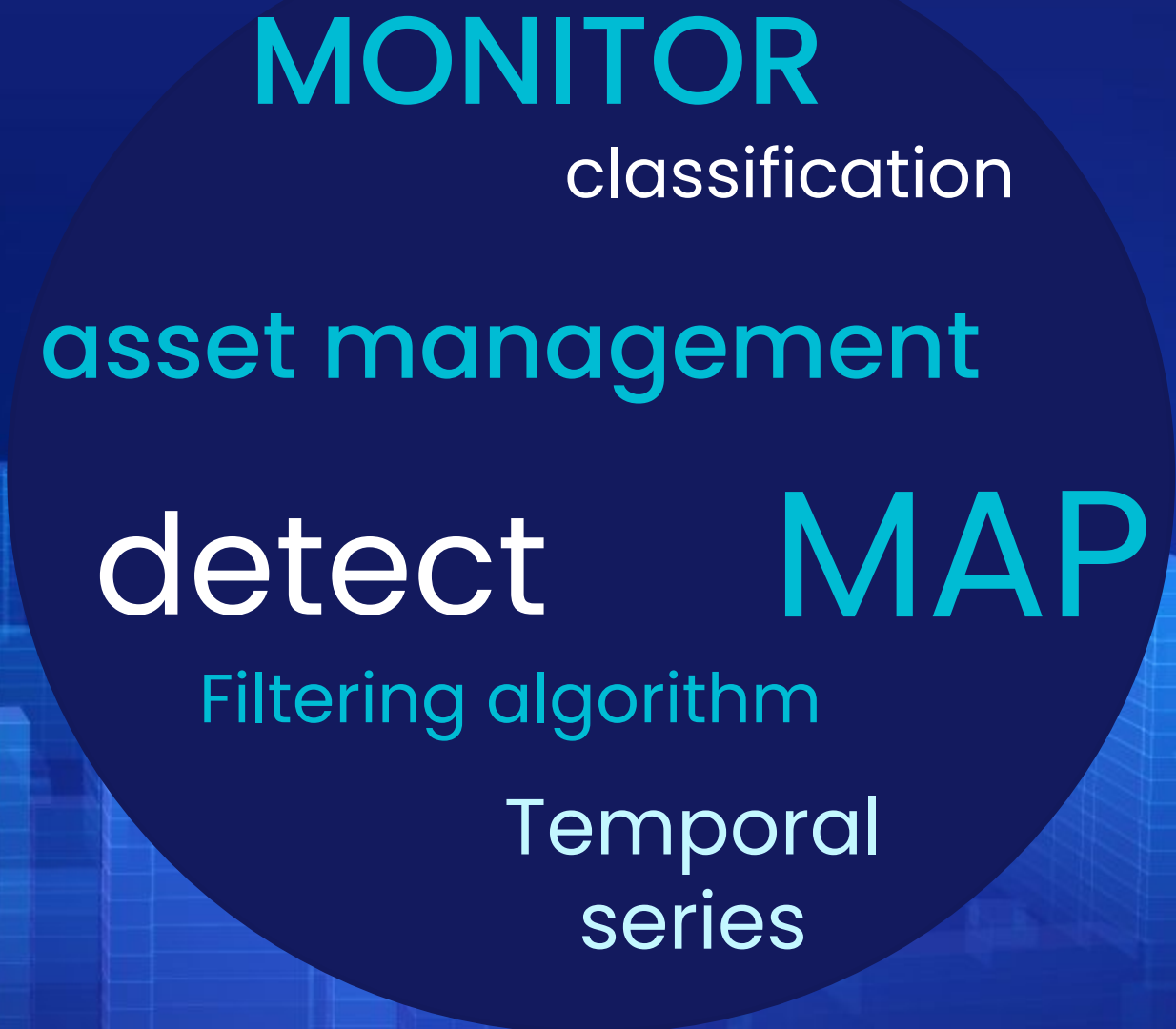
supporto alla manutenzione

- ogni tipo di misurazione areale, rilevazione dello stato di salute del verde
- selezione di potenziali aree di riforestazione e ricapitalizzazione naturale

pianificazione e gestione della sicurezza

- DATI e INFORMAZIONE da connettere alle strategie di adattamento al cambiamento climatico, alla lotta al rischio idrogeologico e alla pianificazione del territorio

e **allineamento requisiti tra città pilota**





Comune di Napoli

sara.scapicchio@comune.napoli.it

eliana.sommella@comune.napoli.it

erika.fricchione@comune.napoli.it

francesca.pignataro@comune.napoli.it

