



Area Trasformazione del Territorio



Gruppo di progettazione: arch. Giuseppe Runfola, arch. Francesca Pignataro, arch. Alessandro De Cicco, Ing. Matteo Rocco

Supporto amministrativo contabile: dott.ssa Annunziata Moscovio, dott.ssa Teresa Castaldo

Responsabile dell'Area Trasformazione del Territorio: arch. Paola Cerotto

RUP: arch. Giuseppe Runfola

PROGETTO DI FATTIBILITÀ TECNICO ECONOMICA

Recupero ex complesso industriale Corradini - lotto 1

Schede di progetto degli edifici

Scheda 1 - EDIFICI 2 - 3

Scheda 2 - EDIFICI 6 - 7a

Scheda 3 - EDIFICI 7b - 8a - 8b

Scheda 4 - EDIFICI 8a - 8b primo piano

Scheda 5 - EDIFICI 9a - 9b - 9c - 9d

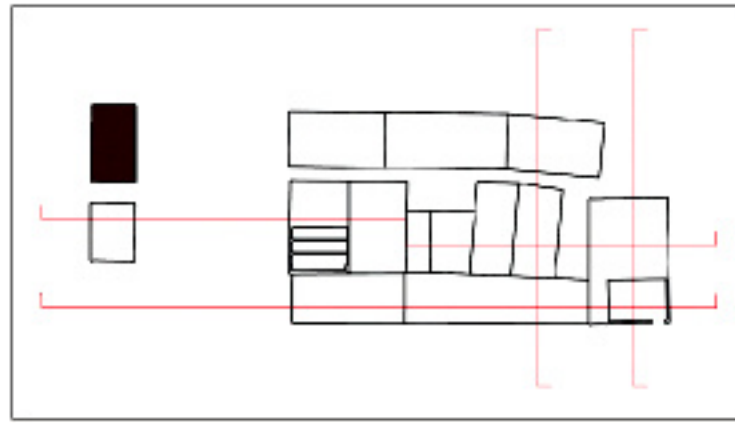
Scheda 6 - EDIFICI 9a - 9b - 9c - 9d primo piano

Scheda 7 - EDIFICI 10a - 10b

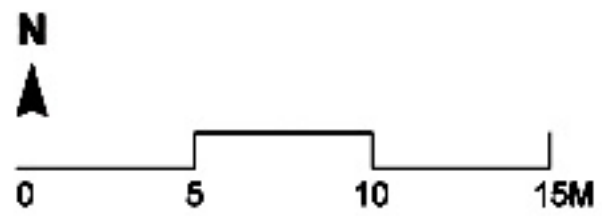
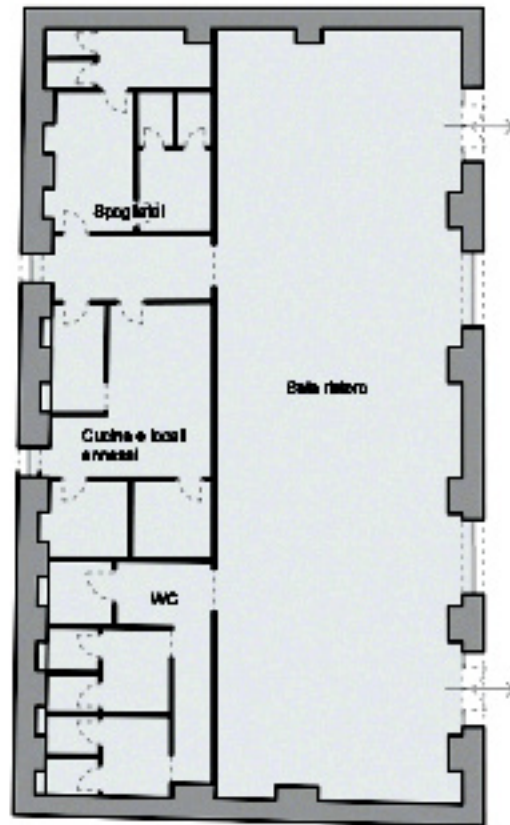
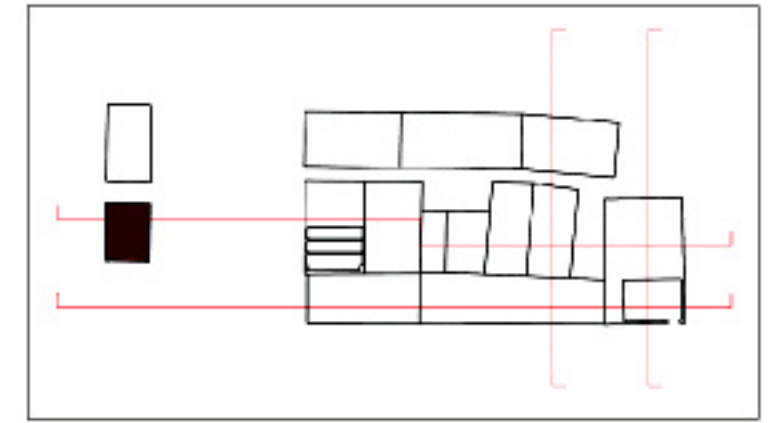
Scheda 8 - EDIFICIO 11

Scheda 9 - EDIFICIO 11 secondo piano

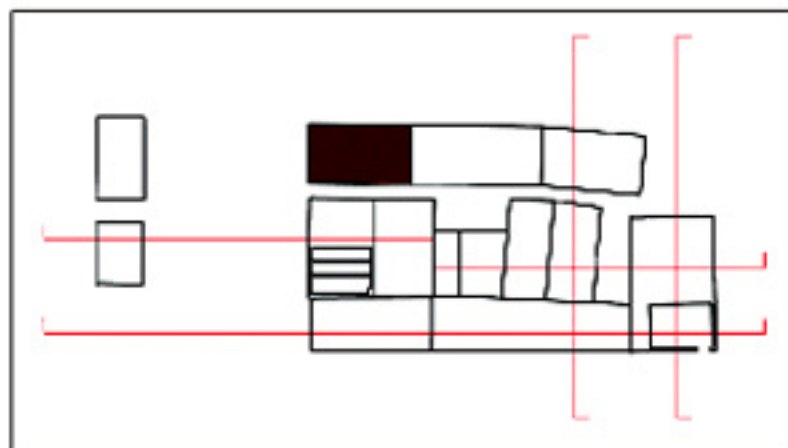
■ EDIFICIO 2
■ Ristorazione



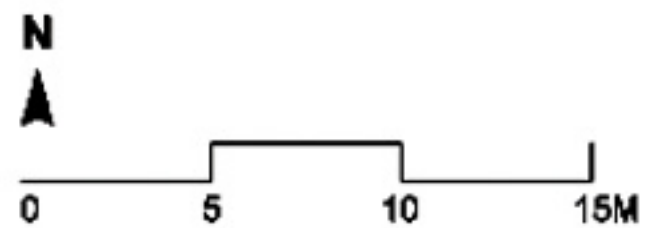
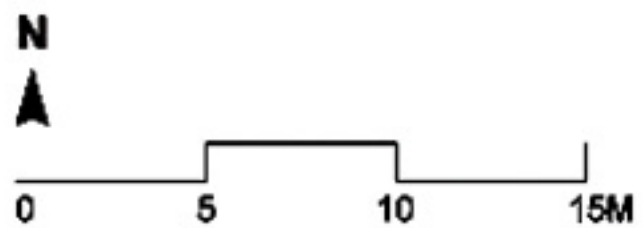
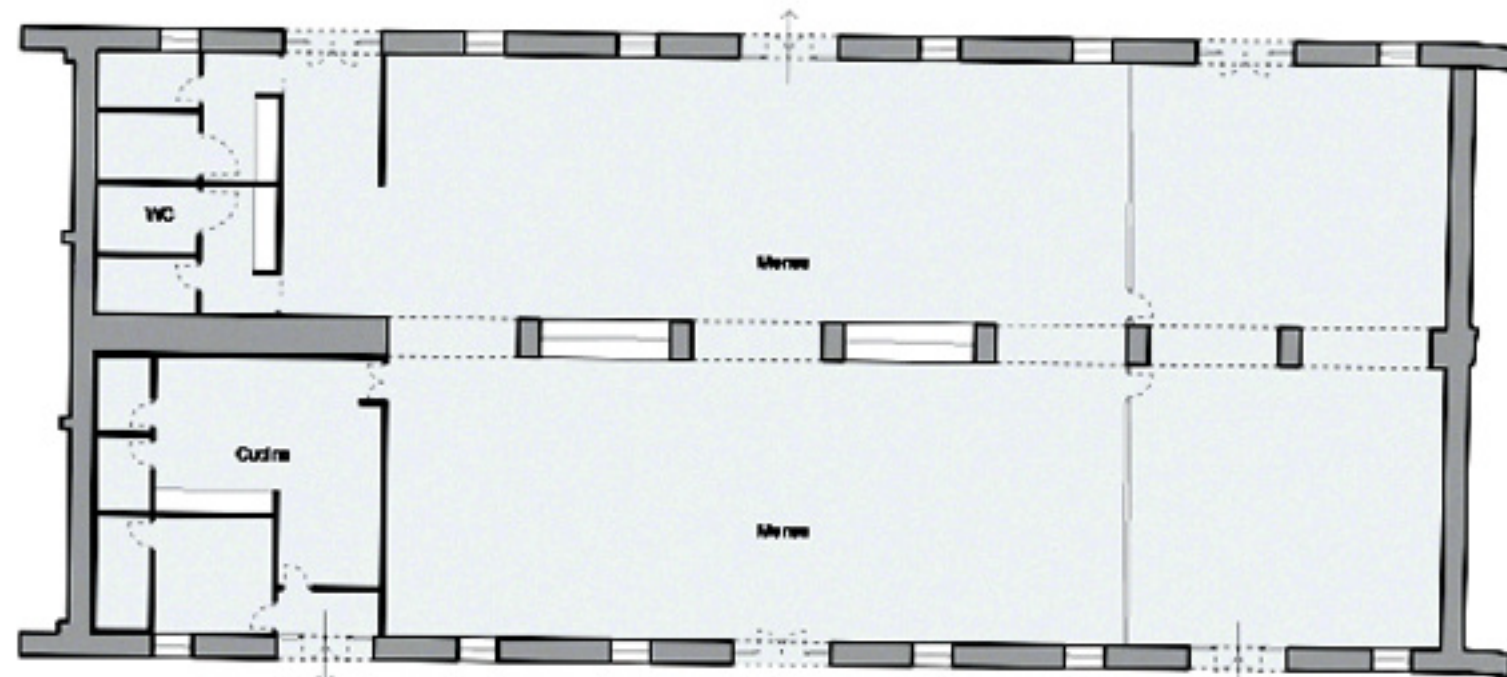
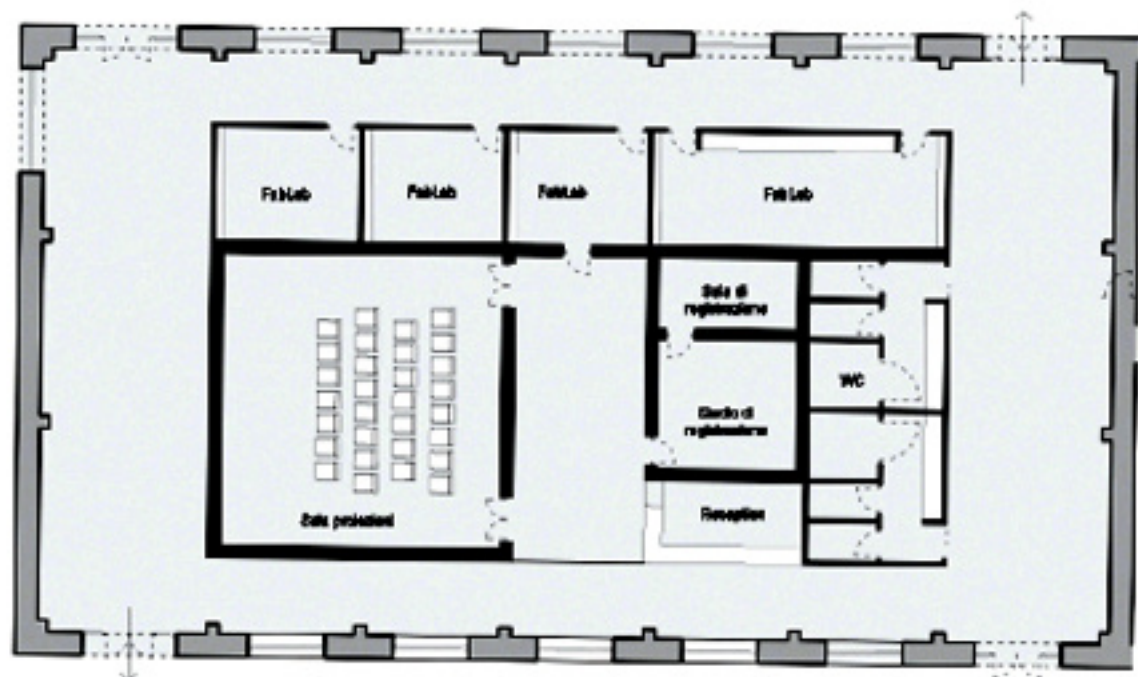
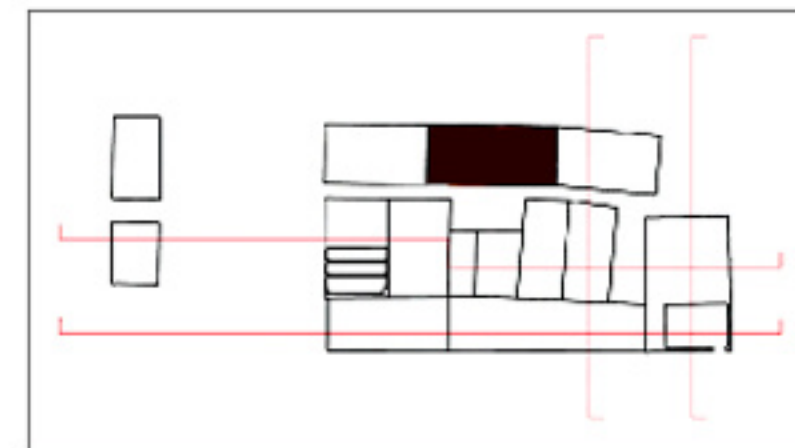
■ EDIFICIO 3
■ Bar



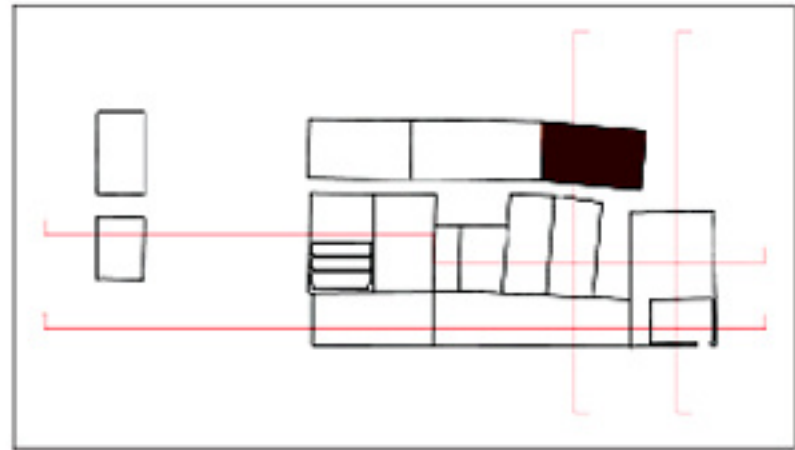
- EDIFICIO 6
- Sala multimediale



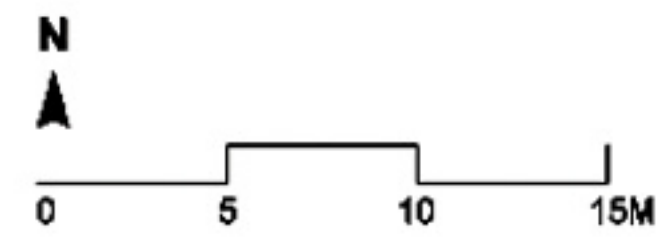
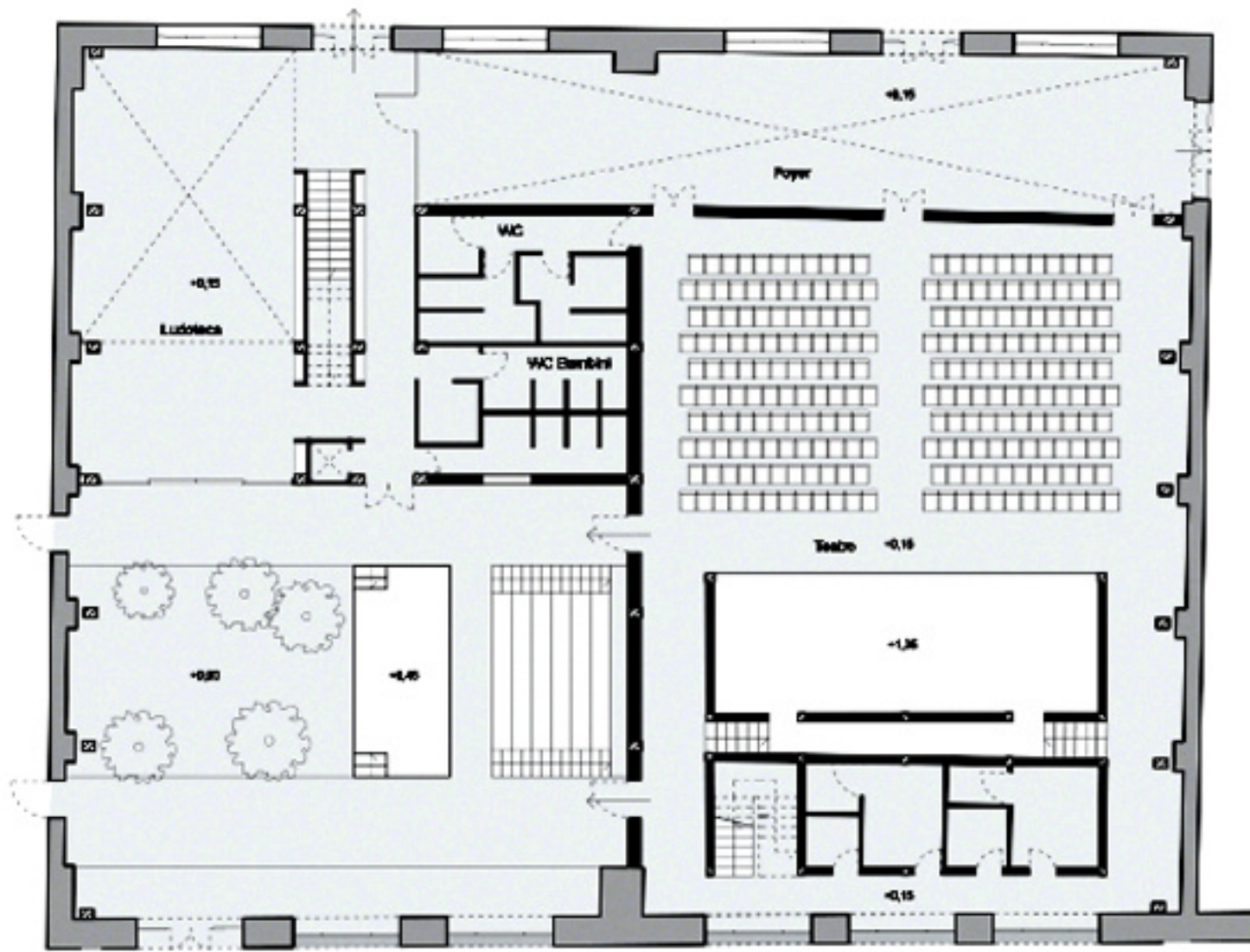
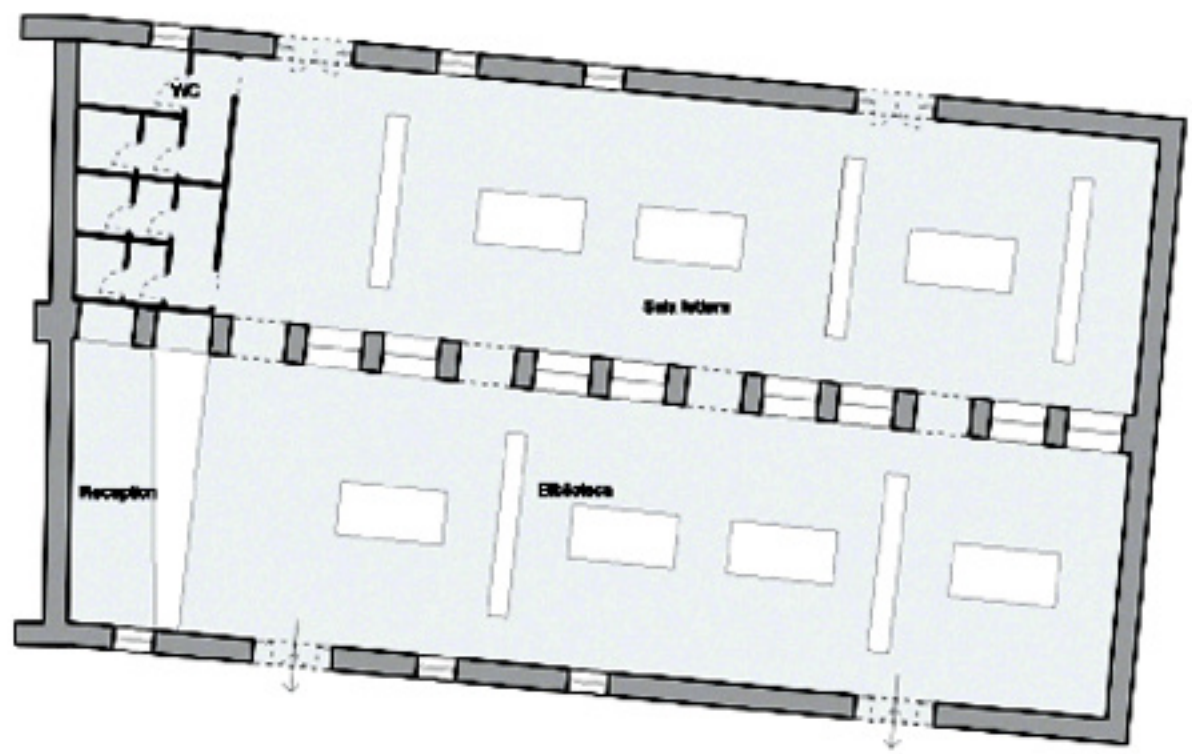
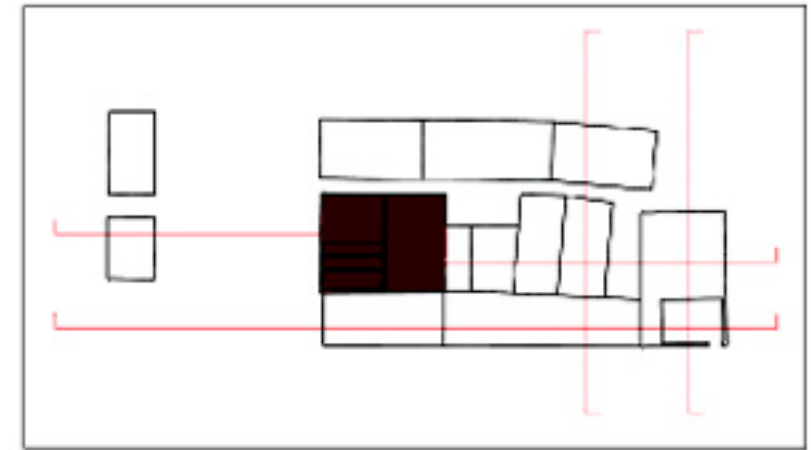
- EDIFICIO 7a
- Servizi alle residenze



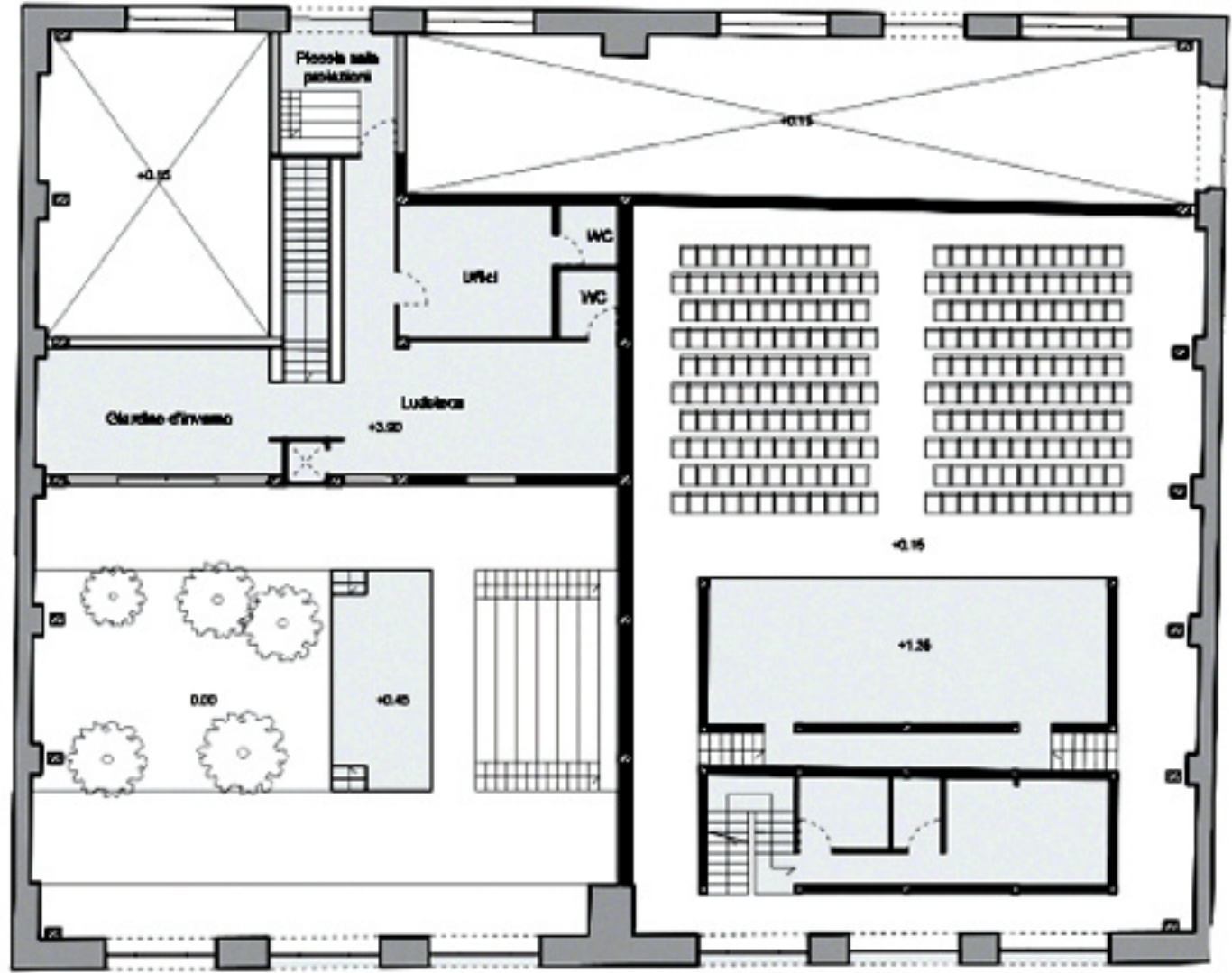
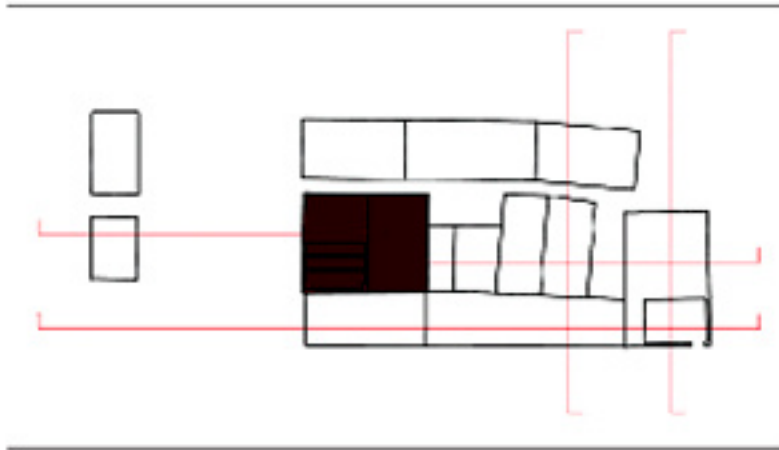
■ EDIFICIO 7b
 ■ Servizi alle residenze



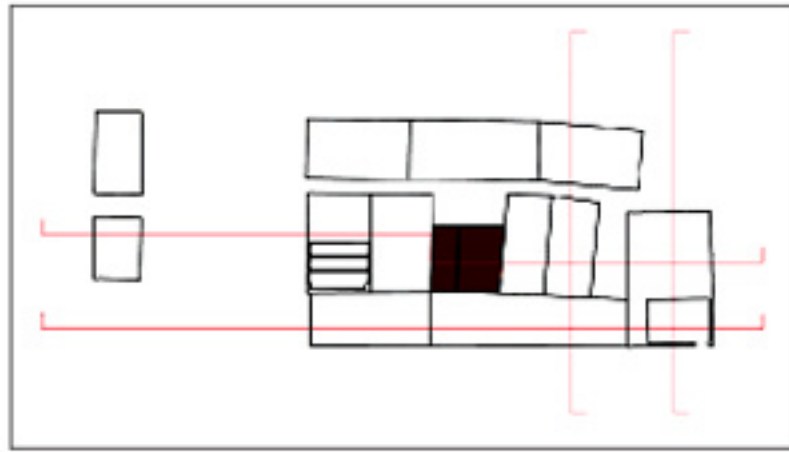
■ EDIFICIO 8a e 8b
 ■ Ludoteca e Teatro



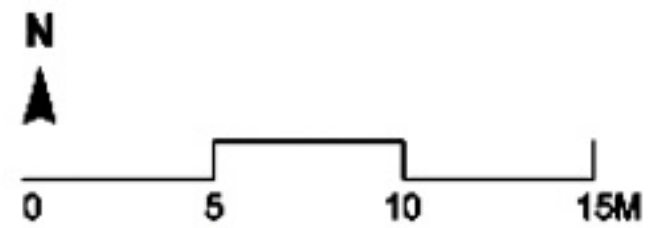
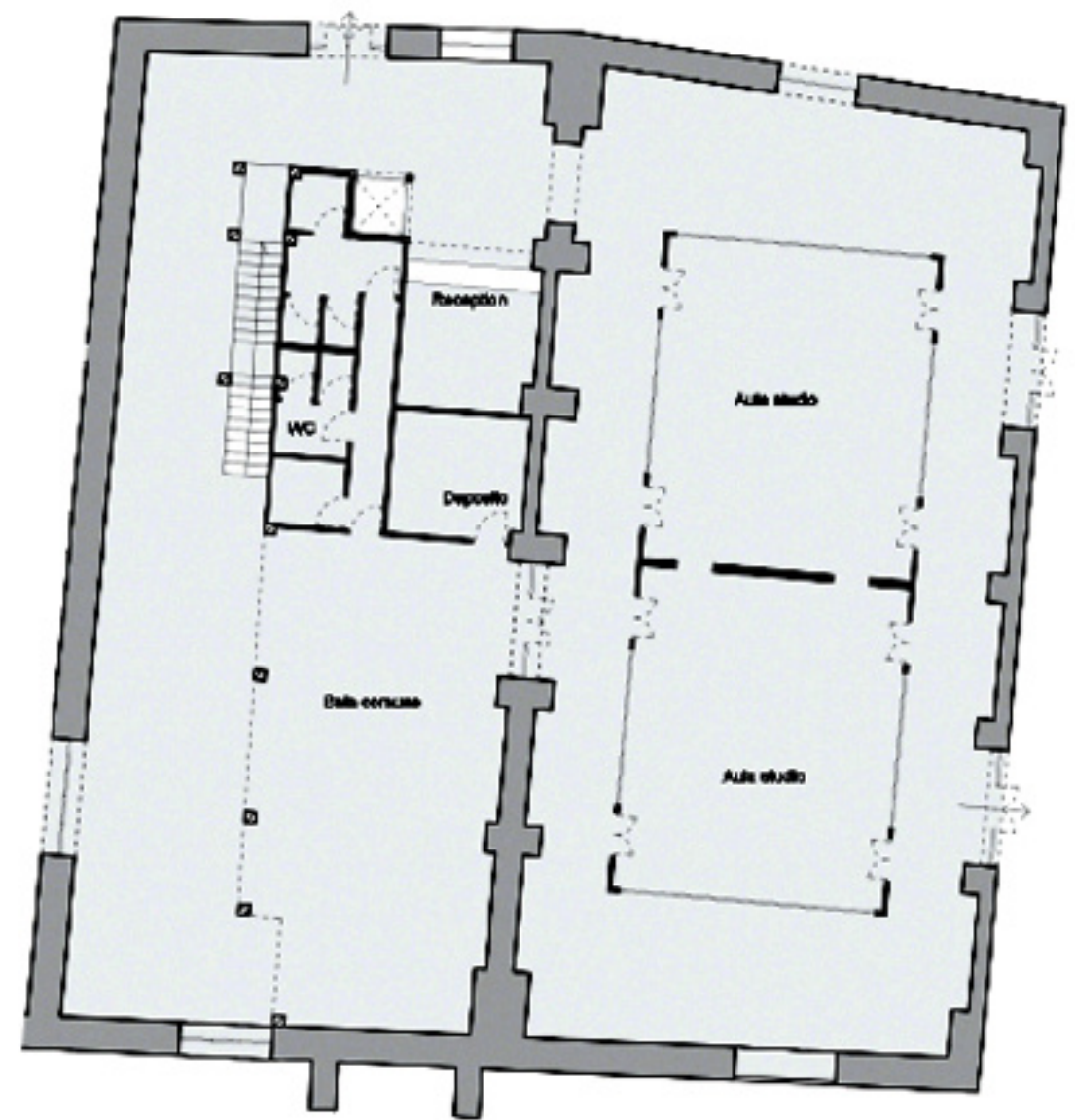
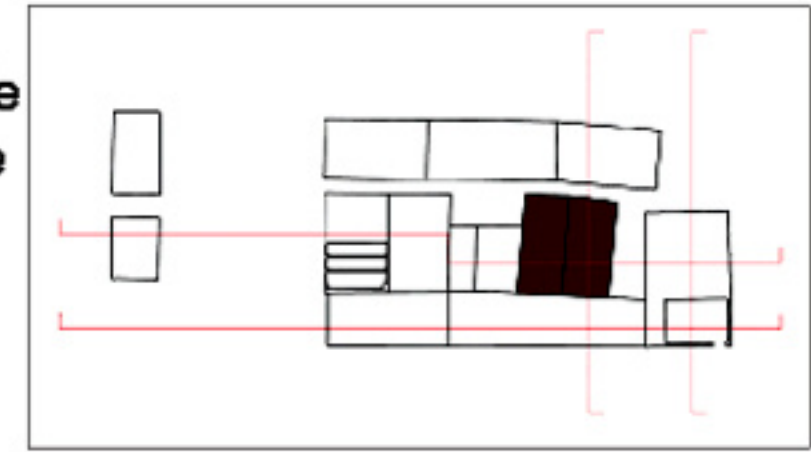
■ EDIFICIO 8a e 8b
■ Ludoteca e Teatro



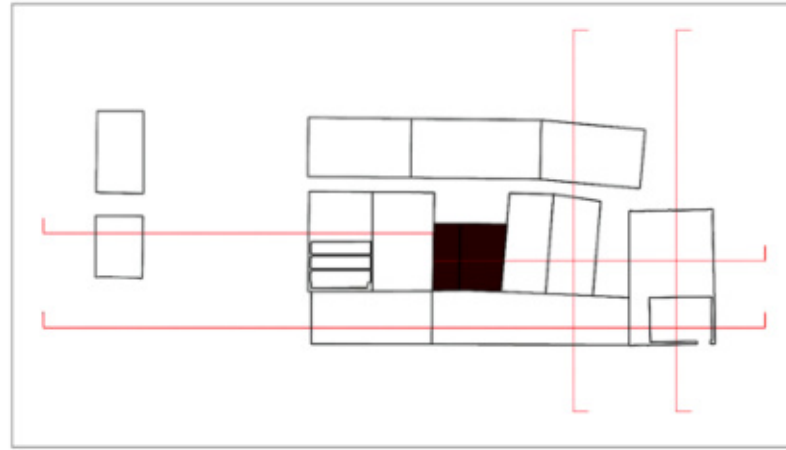
- EDIFICIO 9a e 9b
- Uffici



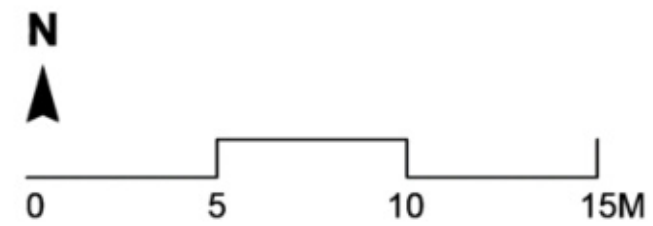
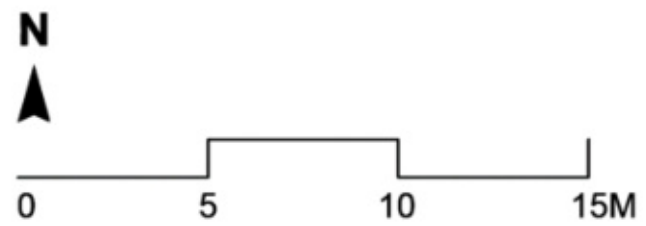
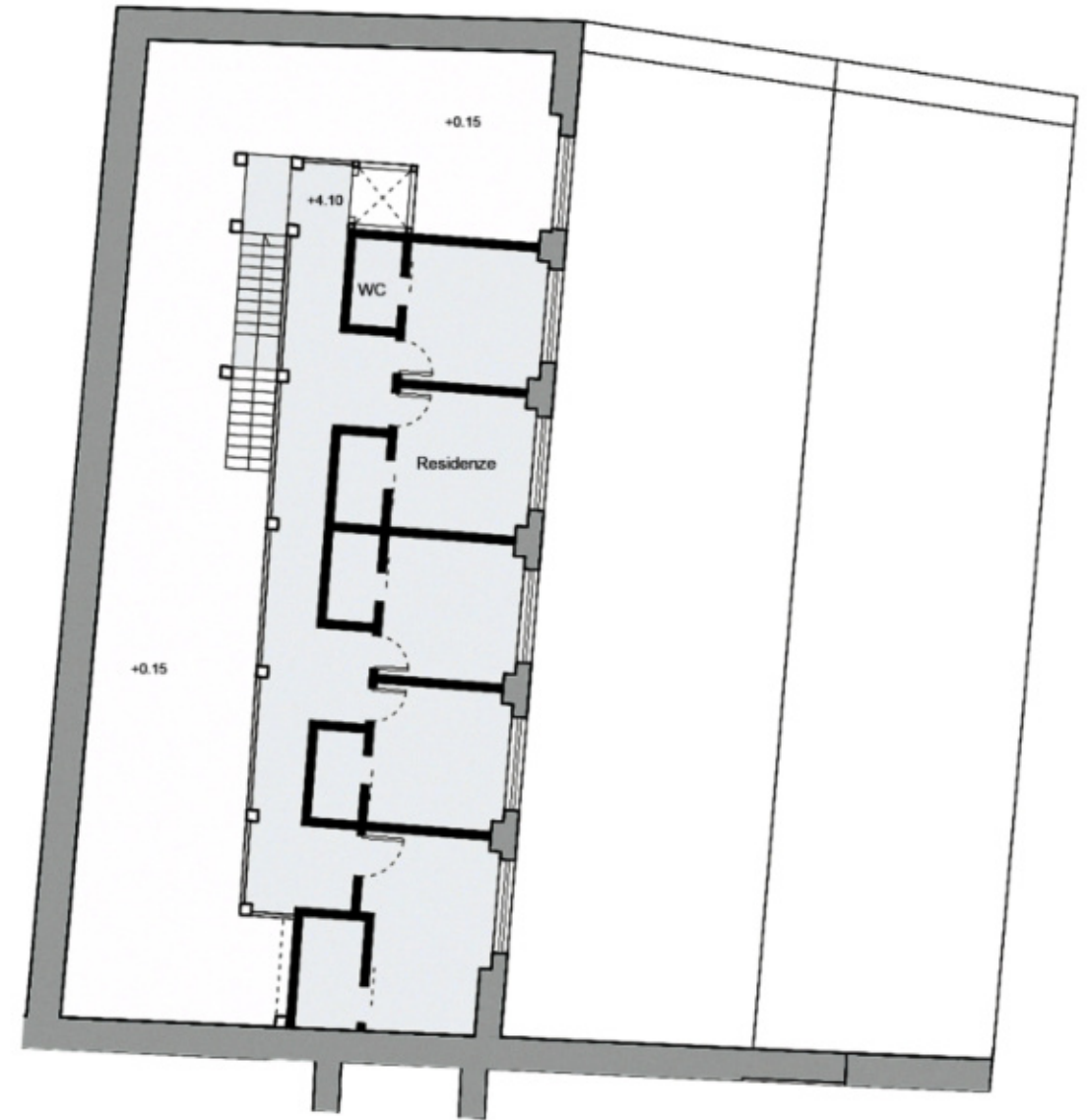
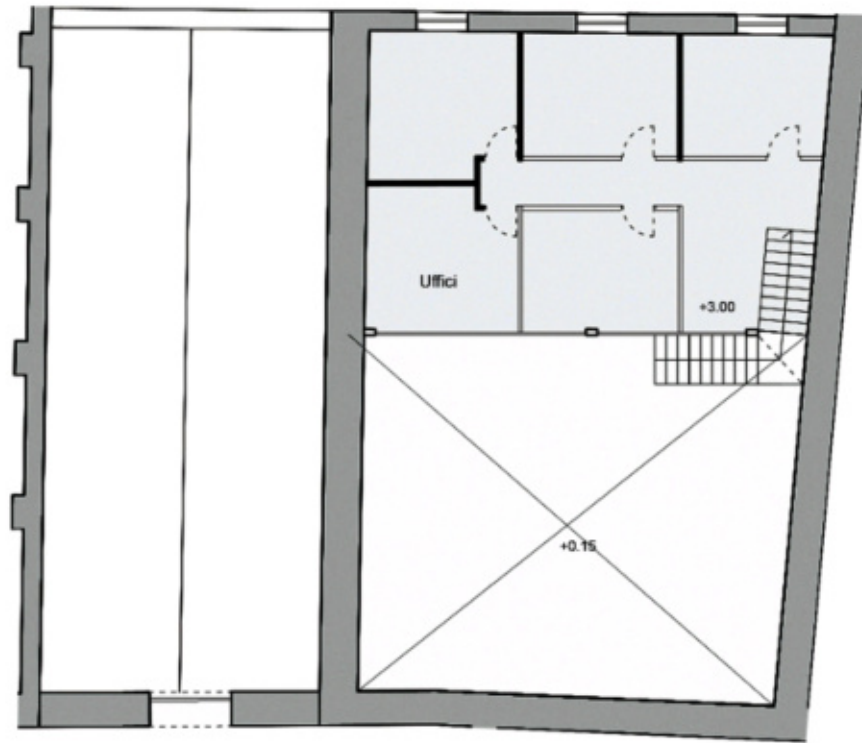
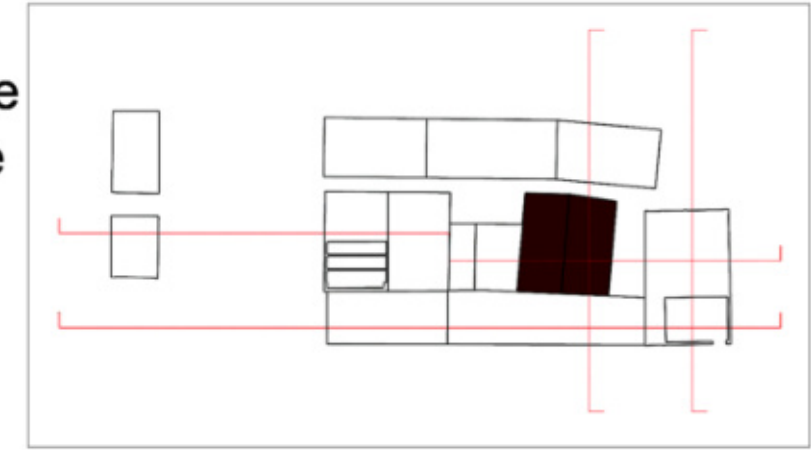
- EDIFICIO 9c e 9d
- Residenze universitarie e servizi alle residenze



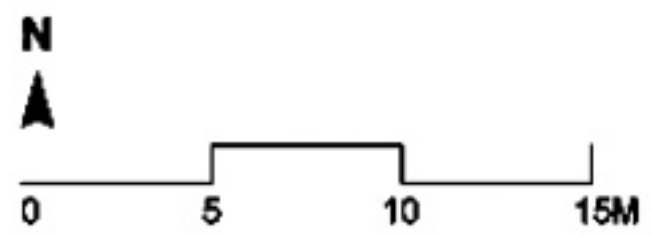
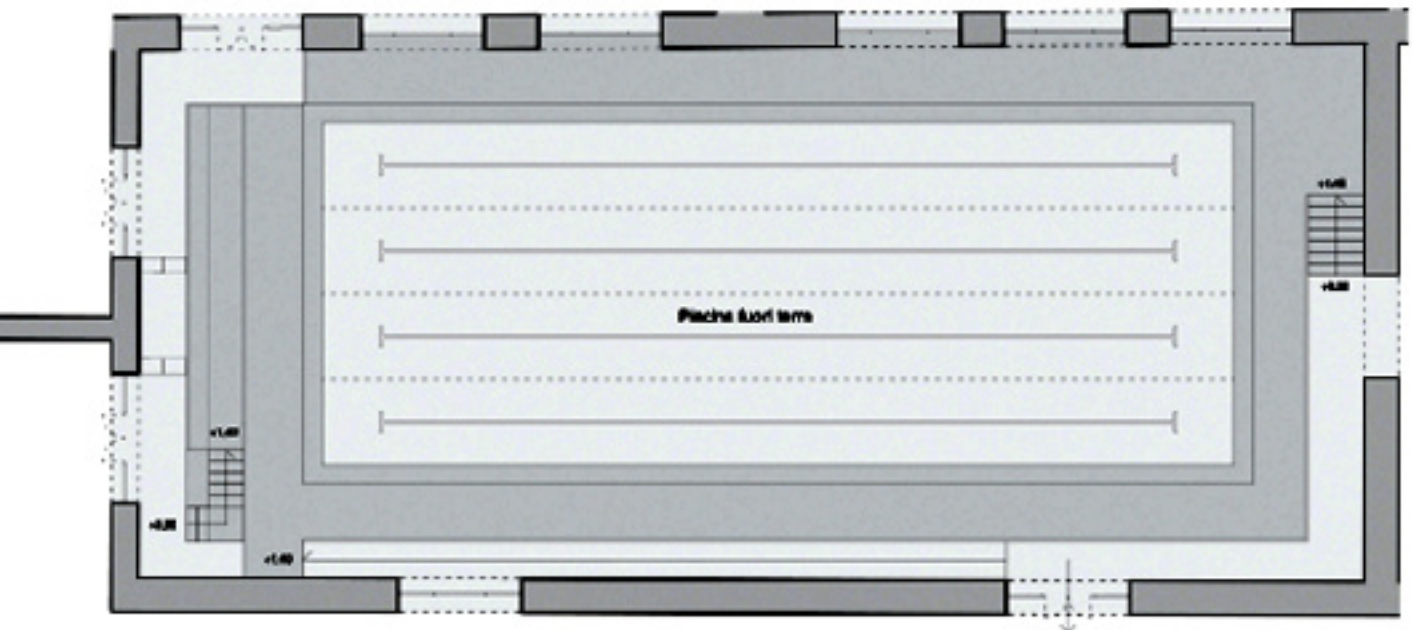
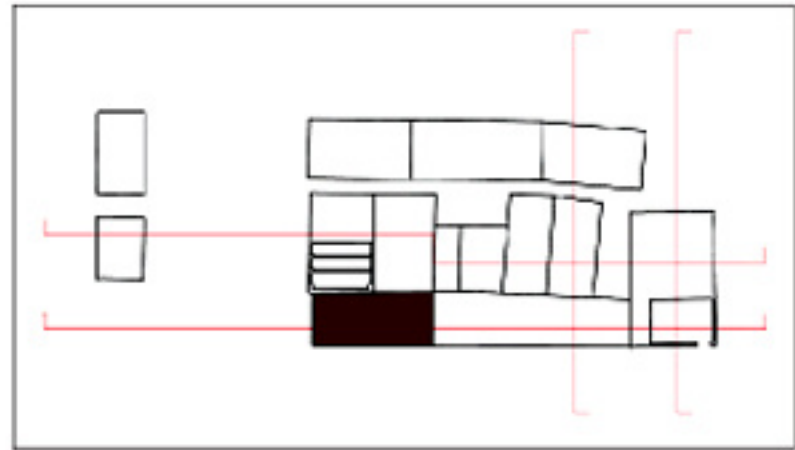
- EDIFICIO 9a e 9b
- Uffici



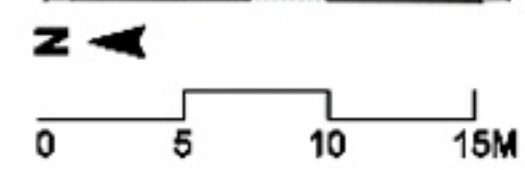
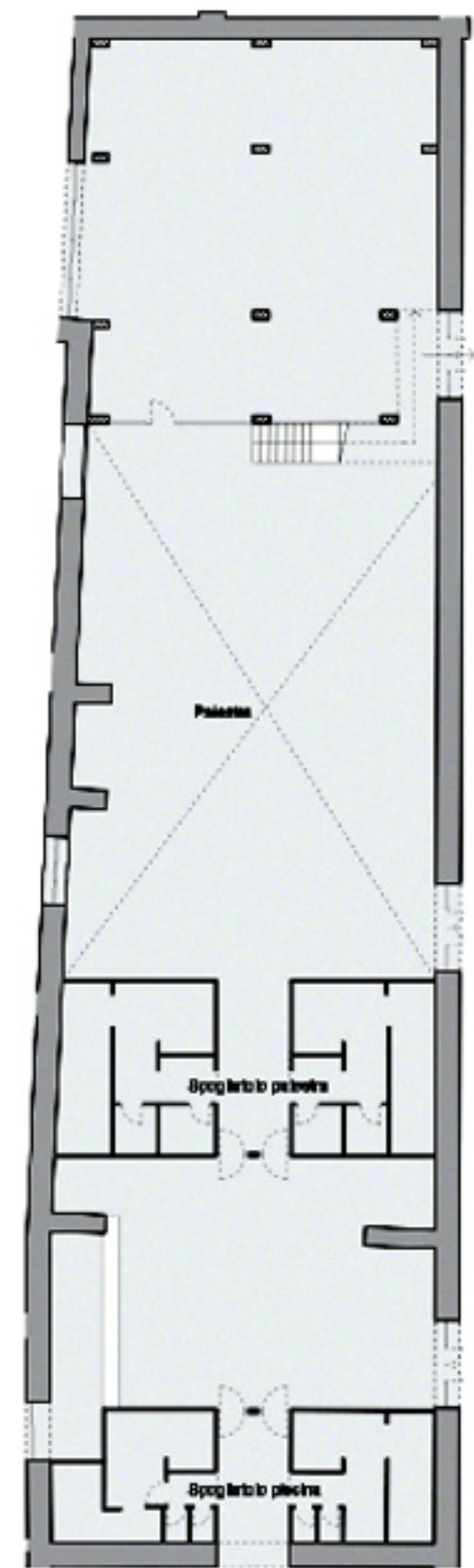
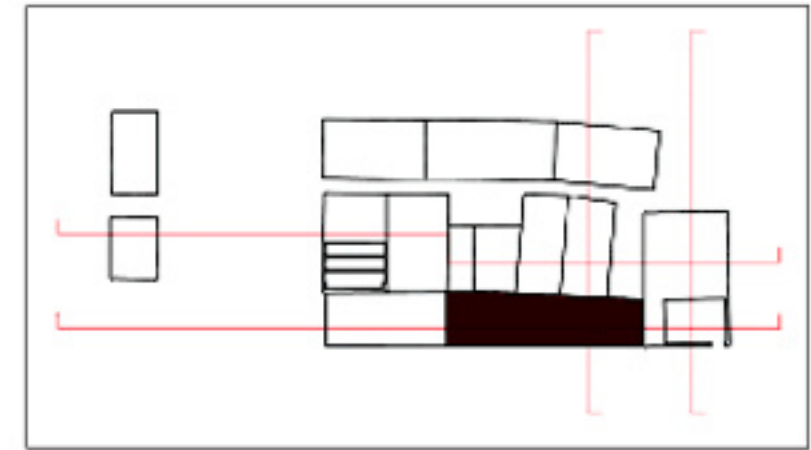
- EDIFICIO 9c e 9d
- Residenze universitarie e servizi alle residenze



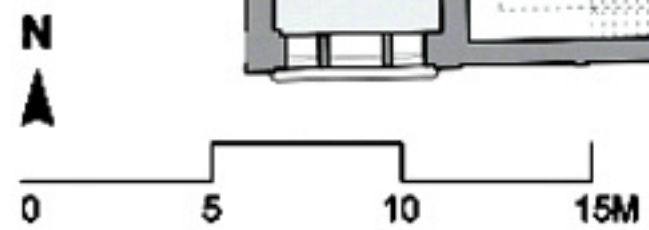
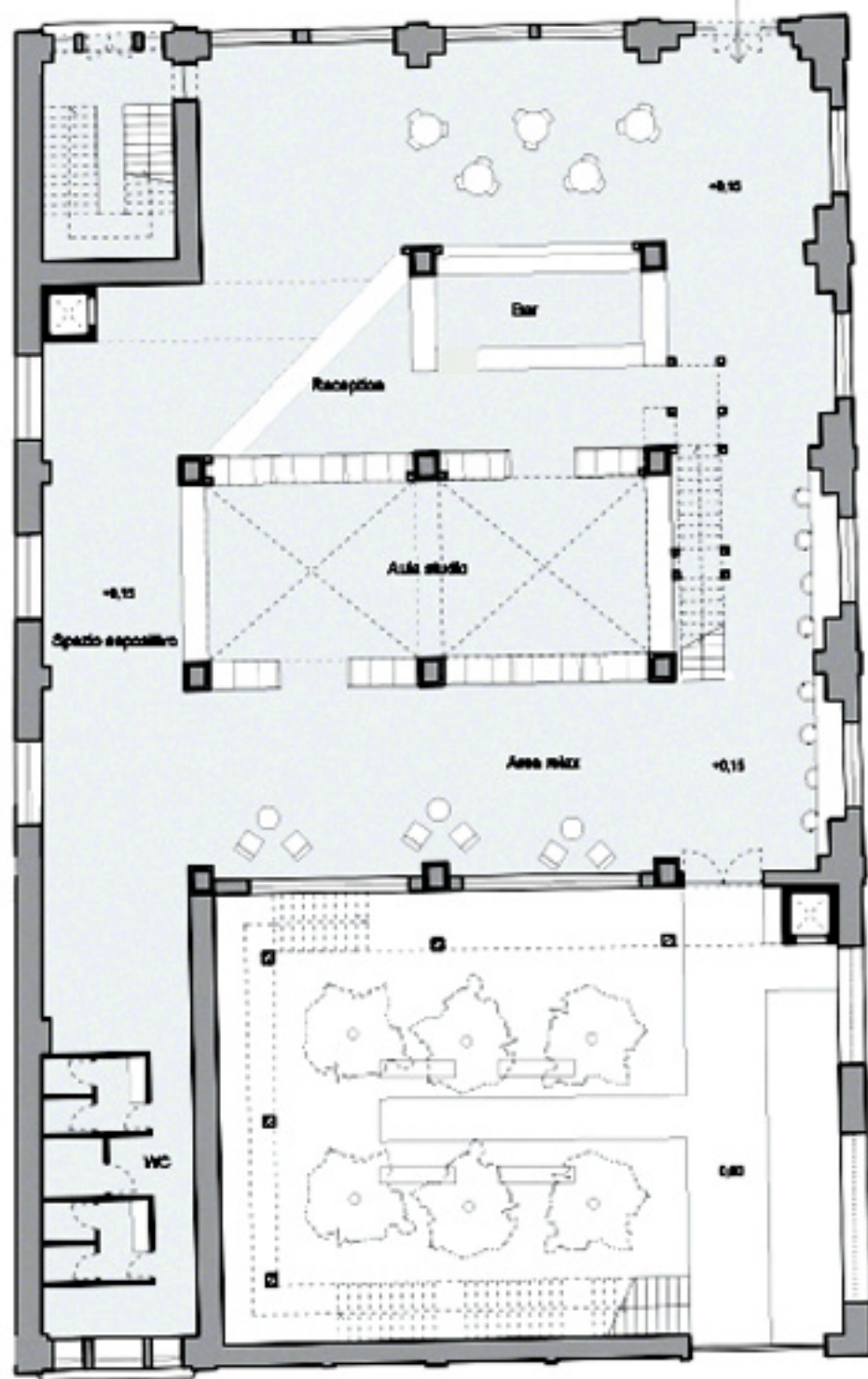
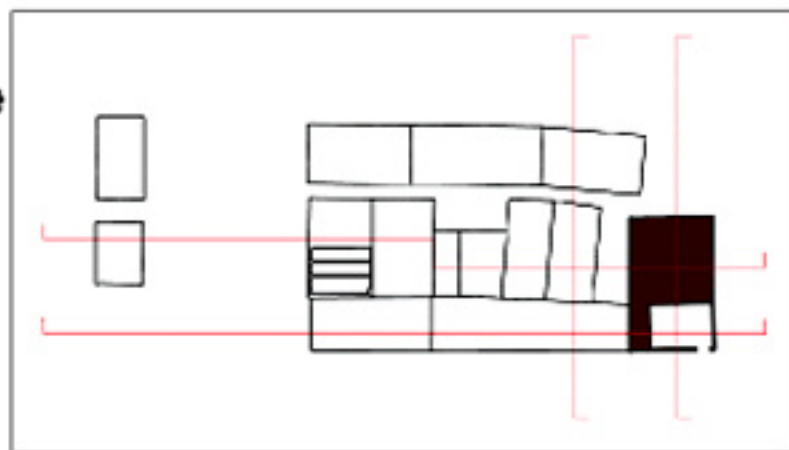
■ EDIFICIO 10a
 ■ Piscina



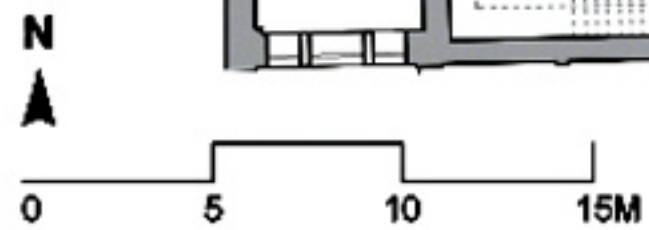
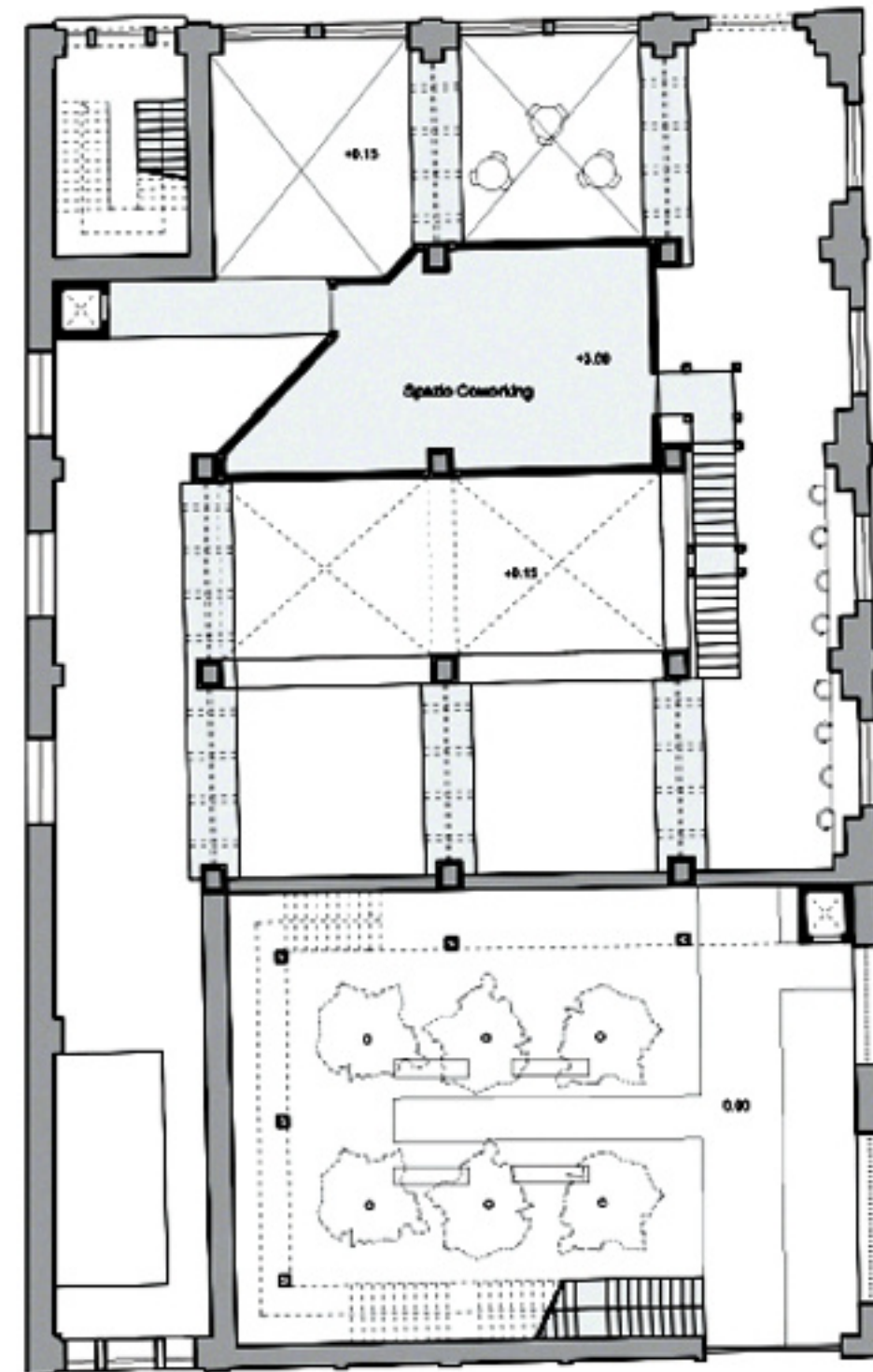
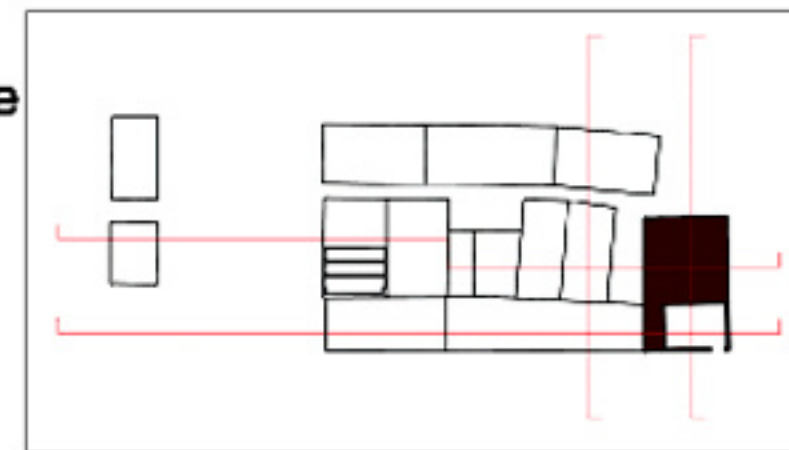
■ EDIFICIO 10b
 ■ Palestra



■ EDIFICIO 11
■ Residenze universitarie



■ EDIFICIO 11
■ Residenze universitarie



■ EDIFICIO 11
■ Residenze universitarie

