

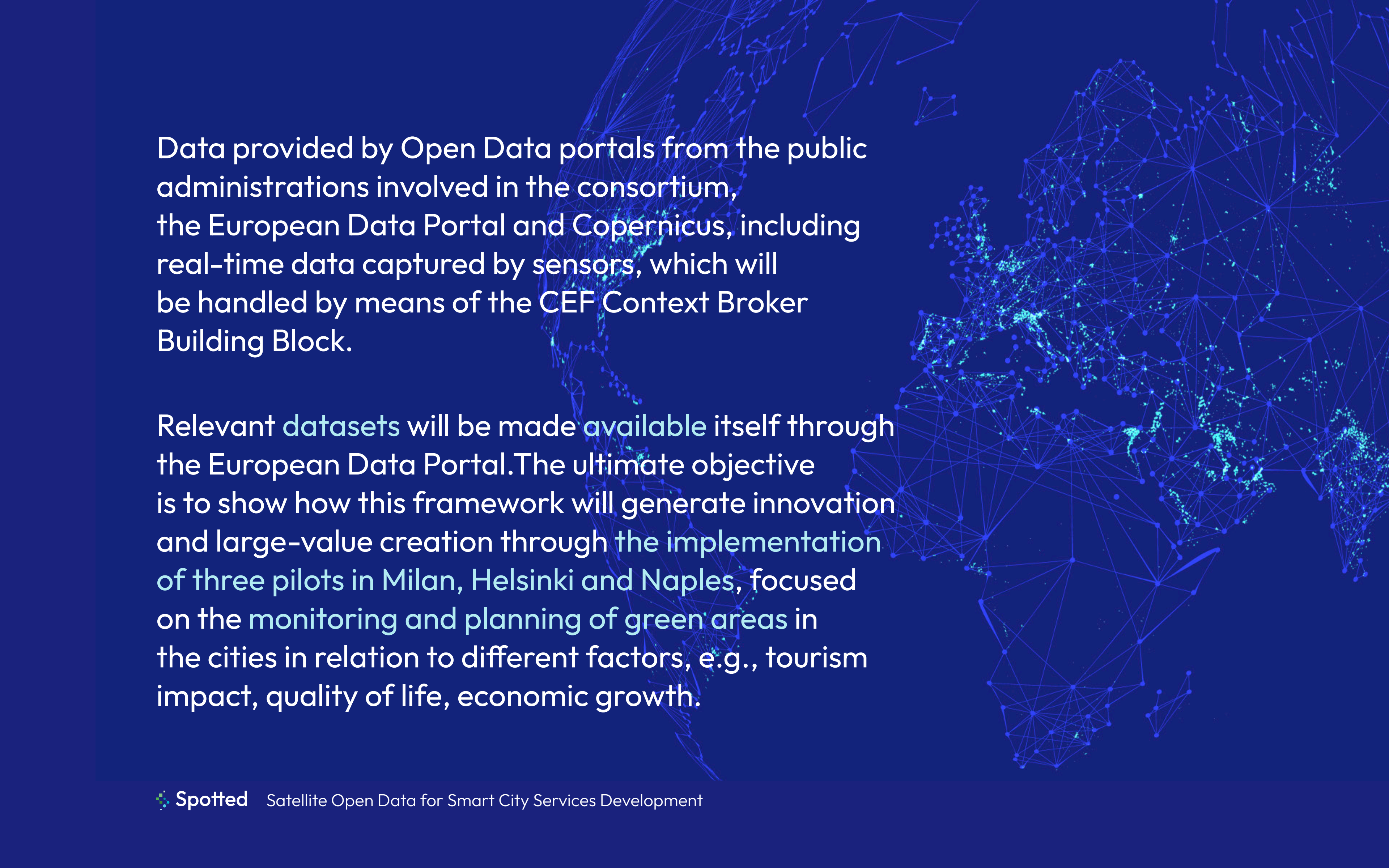
**Spotted**

## **Satellite Open Data for Smart City Services Development**

**Supports Public Administrations in the field  
of green areas management**

# Spotted Achievements

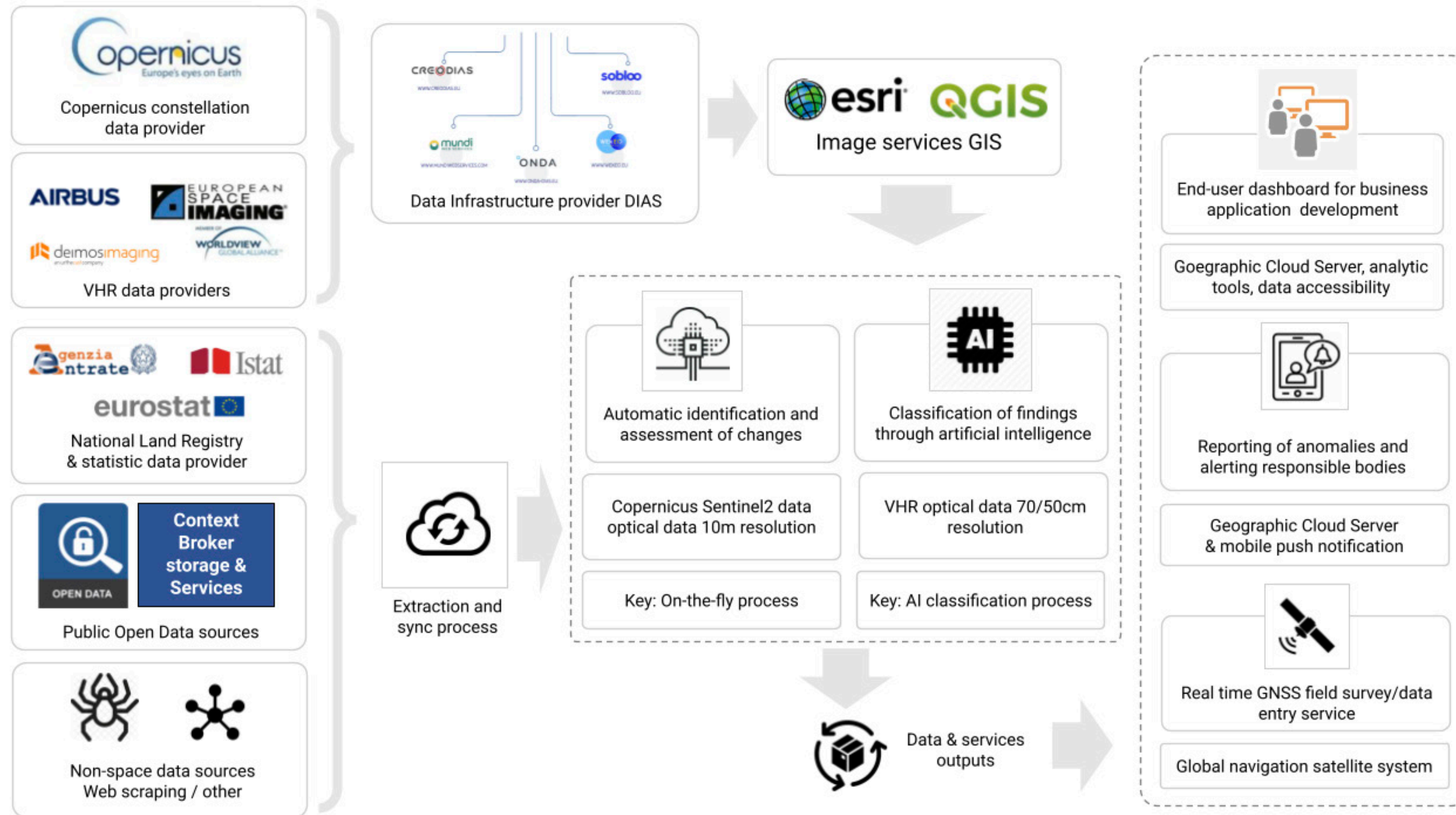
Funded by the European Commission under the Connecting Europe Facilities (CEF) program-Horizon2020, **SPOTTED** aims to provide an innovative solution based on the integration and customized processing of massive Open Data collections, including Earth Observation (EO) data, to monitor and support decision makers in the field of green areas management.



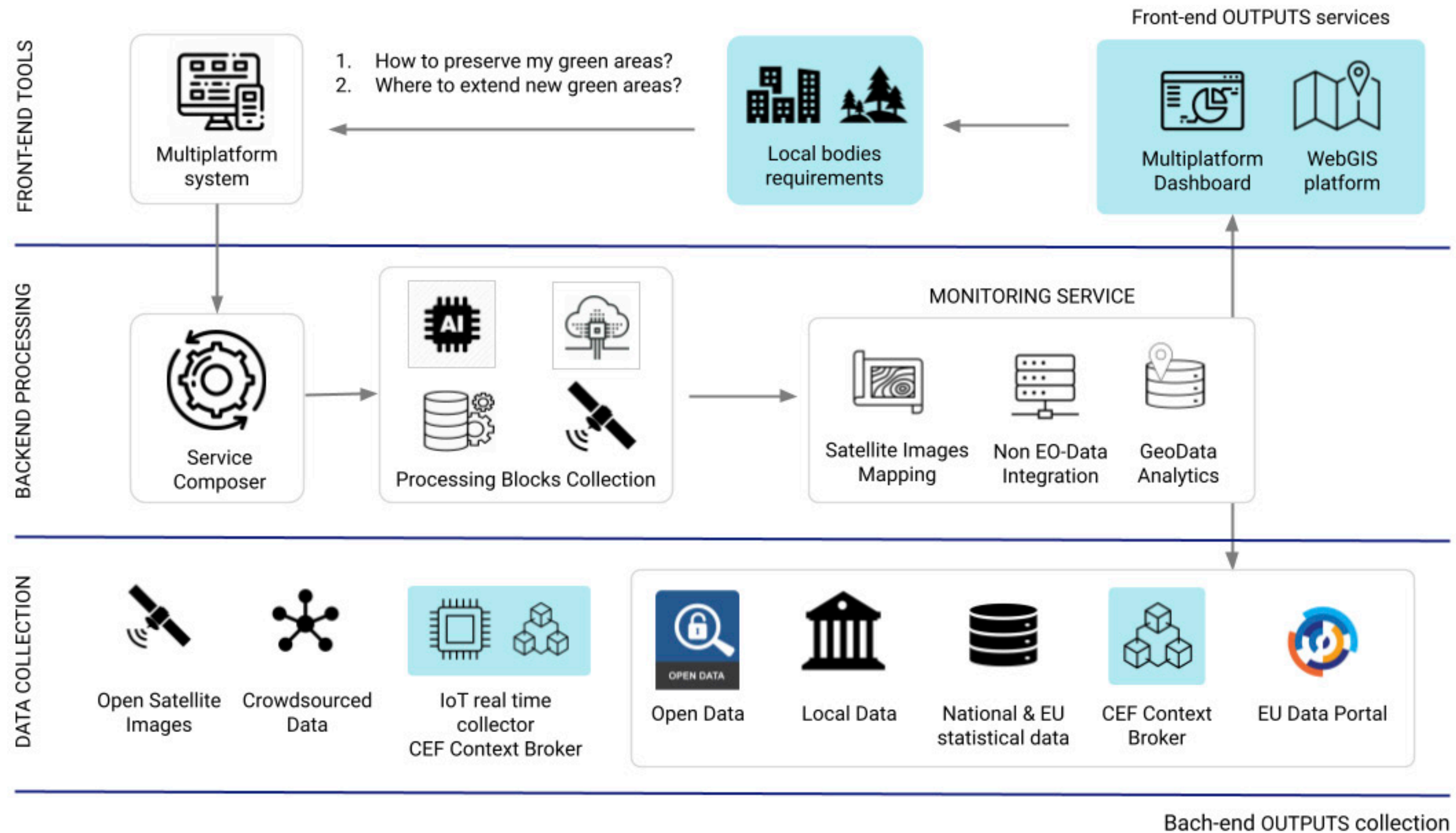
Data provided by Open Data portals from the public administrations involved in the consortium, the European Data Portal and Copernicus, including real-time data captured by sensors, which will be handled by means of the CEF Context Broker Building Block.

Relevant datasets will be made available itself through the European Data Portal. The ultimate objective is to show how this framework will generate innovation and large-value creation through the implementation of three pilots in Milan, Helsinki and Naples, focused on the monitoring and planning of green areas in the cities in relation to different factors, e.g., tourism impact, quality of life, economic growth.

# Spotted Framework



# Architecture of proposed system



# About the Building Blocks of the European Commission

The EU Digital Single Market aims to create the right environment for digital networks.

To support the success of the Digital Single Market, the Connecting Europe Facility (CEF) Horizon2020 programme was funding a number of generic and reusable Building Blocks that provide core capabilities that can be reused in any European project to facilitate the delivery of digital public services across borders and sectors.

# What is Context Broker?

Context Broker is a digital platform component that enables the integration of gathered data including insights for further exploitation.



## Data Broker

**Assemble** information from different systems and belong to different organisations, instead of having them perform in separate silos.



## Leverage investments

**Enable** the creation of a data marketplace in the Digital Single Market (of portable and interoperable solutions).



## Easy development

**Reduce** costs and time in the development of context information-based platforms and solutions. Experience has shown that it is possible to create meaningful dashboards in just a few days!

Source: [Connecting Europe Facility](#)

# Partners

**theLisboncouncil**  
think tank for the 21<sup>st</sup> century

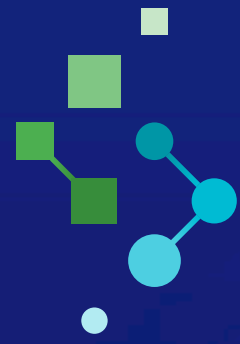


**FORUM  
VIRIUM  
HELSINKI**



**LATITUDO 4.0**





# Spotted

[cef-spotted.eu](https://cef-spotted.eu)



Co-financed by the Connecting Europe Facility  
of the European Union

The contents of this publication are the sole responsibility of FIWARE  
Foundation and do not necessarily reflect the opinion of the European Union.