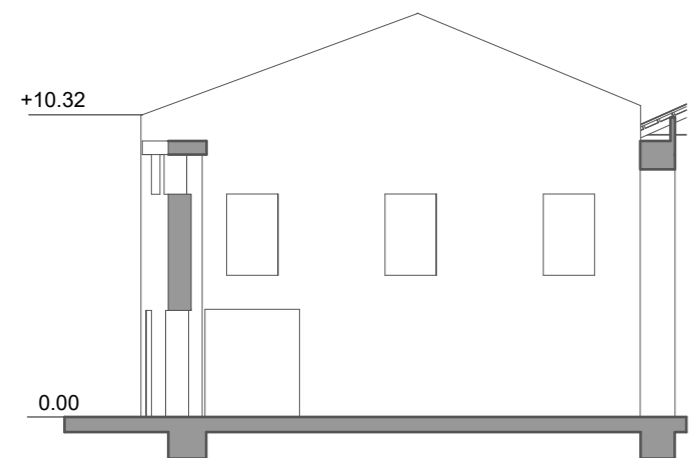
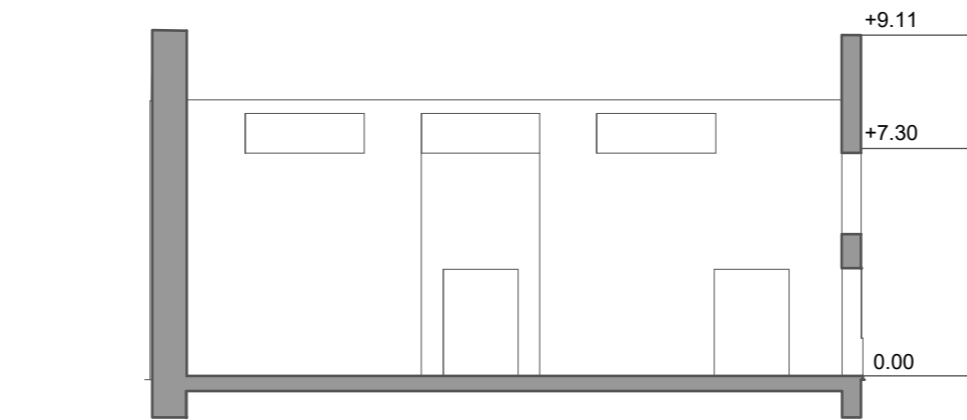


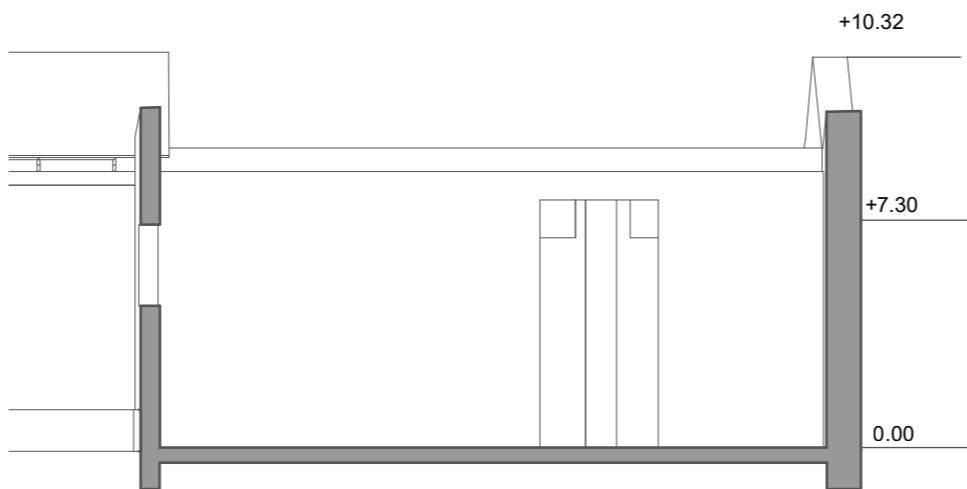
Pianta piano terra scala 1:200



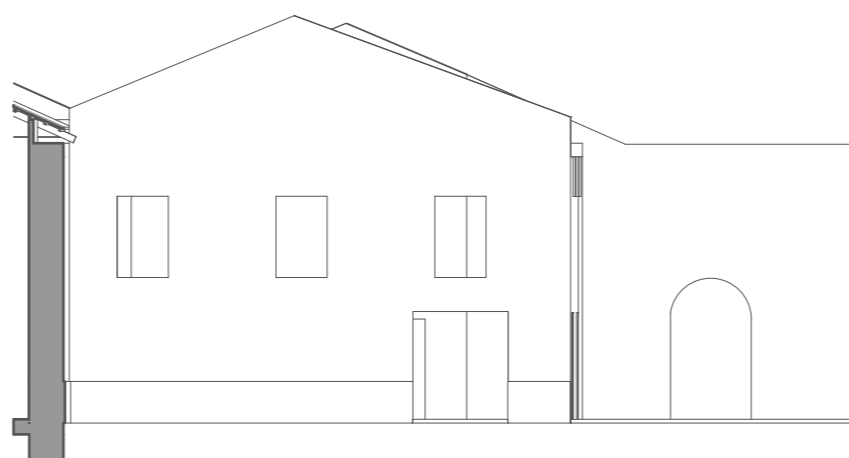
Sezione A-A' scala 1:200



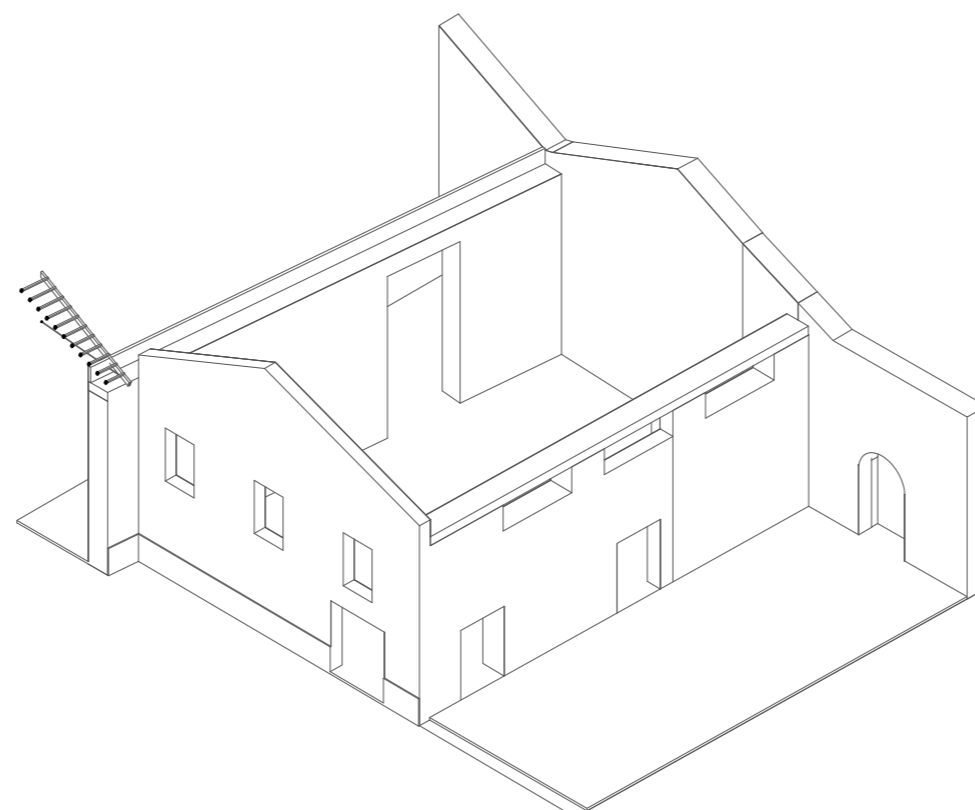
Sezione B-B' scala 1:200



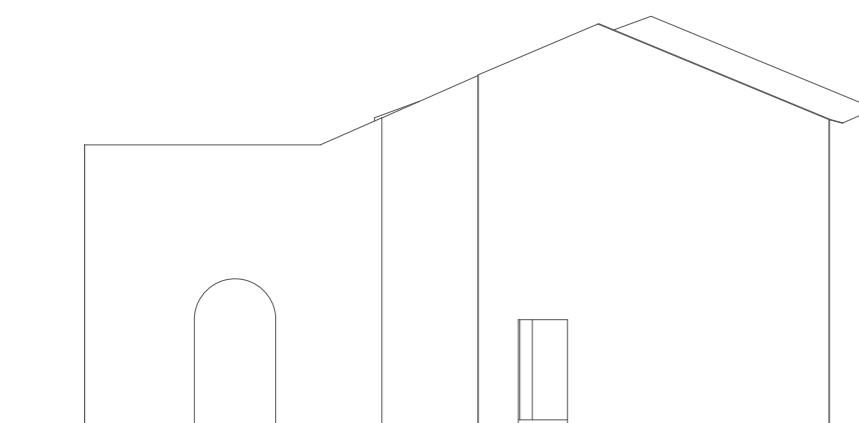
Sezione C-C' scala 1:200



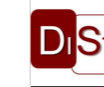
Prospetto Nord scala 1:200



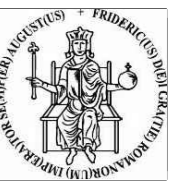
Vista 3D scala 1:250



Prospetto Sud scala 1:200



COMUNE DI NAPOLI



Area Trasformazione del Territorio



Gruppo di progettazione: arch. Giuseppe Runfola, arch. Francesca Pignataro, arch. Alessandro De Cicco, Ing. Matteo Rocco

Supporto amministrativo contabile: dott.ssa Annunziata Moscovio, dott.ssa Teresa Castaldo

Responsabile dell'Area Trasformazione del Territorio: arch. Paola Cerotto

RUP: arch. Giuseppe Runfola

### PROGETTO DI FATTIBILITÀ TECNICO ECONOMICA

#### Recupero ex complesso industriale Corradini - lotto 1

Stato di fatto - Edificio 9a-9b

EG-SF9-S1

scala: varie

