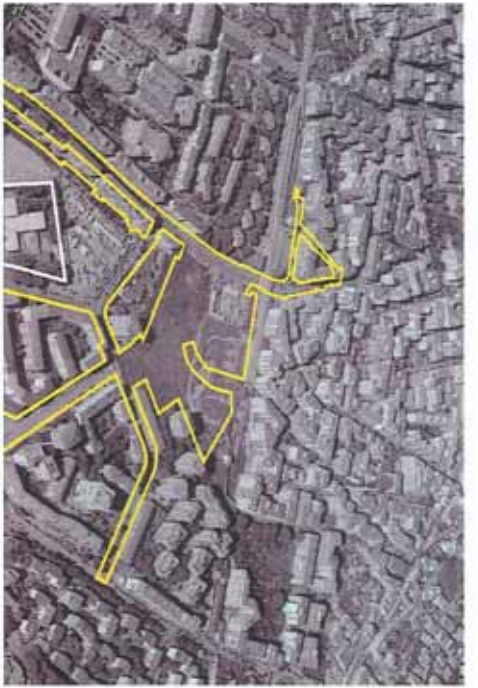






PER COPIA CONFORME  
IL DIRIGENTE  
ING. ANTONIO CAMPORA





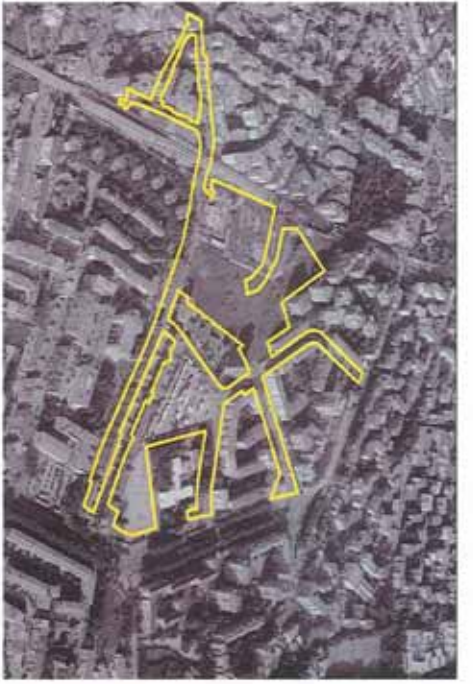
PER COPIA CONFORME  
IL DIRIGENTE  
ING. ANTONIO CALZOLERA





PER COPIA CONFORME  
IL DITTO DANTE  
ING. ANTONIO CAMPEORA





PER COPIA CONFORME  
IL D.  N. 115/1986  
ING. ANTONIO CAMEROTA





PER COPIA CONFORME  
IL DISEGNANTE  
ING. ANTONIO CAMPOBORA





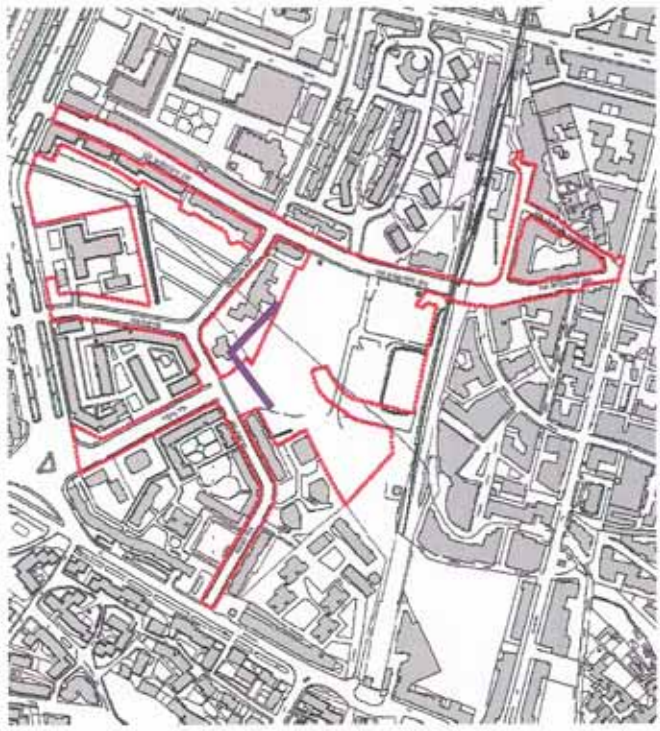
PER COPIA CONFORME  
IL DIRIGENTE  
ING. ANGELO CAMPIORA





912

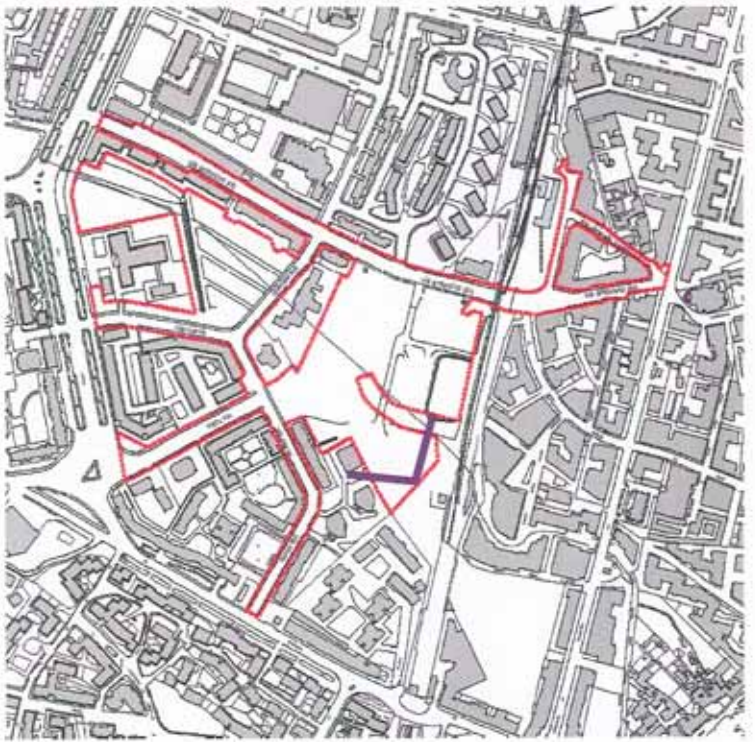
PER COPIA CONFORME  
IL DIRIGENTE  
ING. ANTONIO CASAPROLA



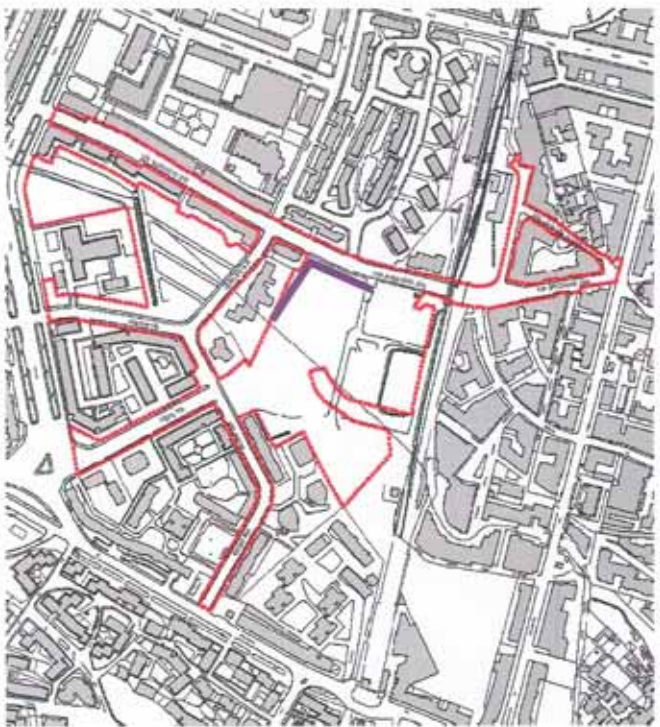




PER COPIA CONFORME  
IL DIRIGENTE  
ING. ANTONIO CAMFORA





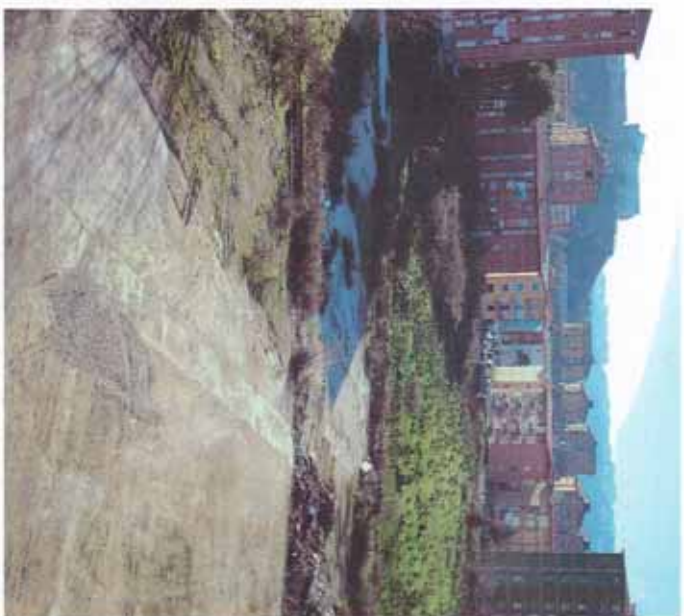


PER COPIA CONFORME  
IL DIRIGENTE  
ING. ANTONIO CAMBORA

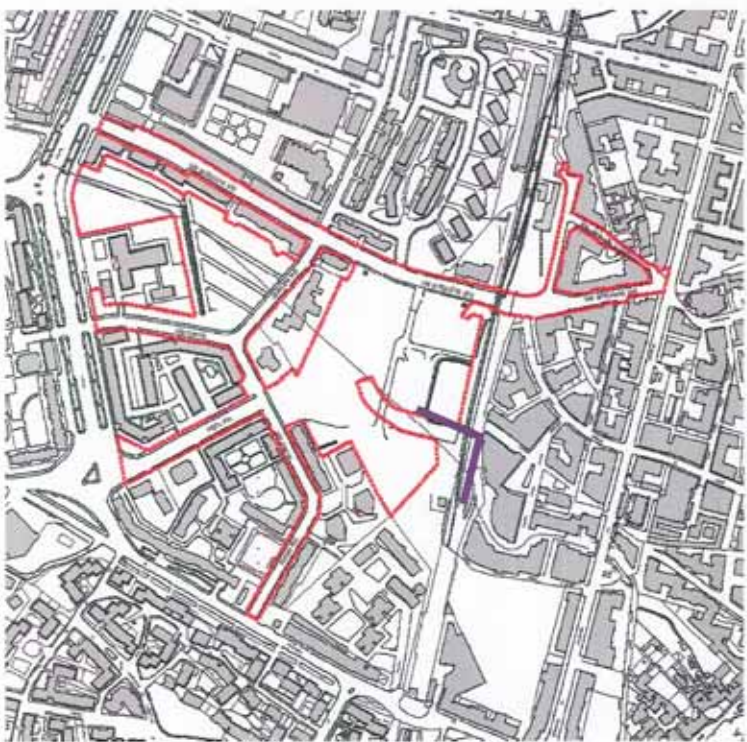


014





PER COPIA CONFORME  
IL DIRIGENTE  
ING. ANTONIO CAMPORA







216

PER COPIA CONFORME  
IL DIRETTORE  
ING. ANTONIO CAMPORA



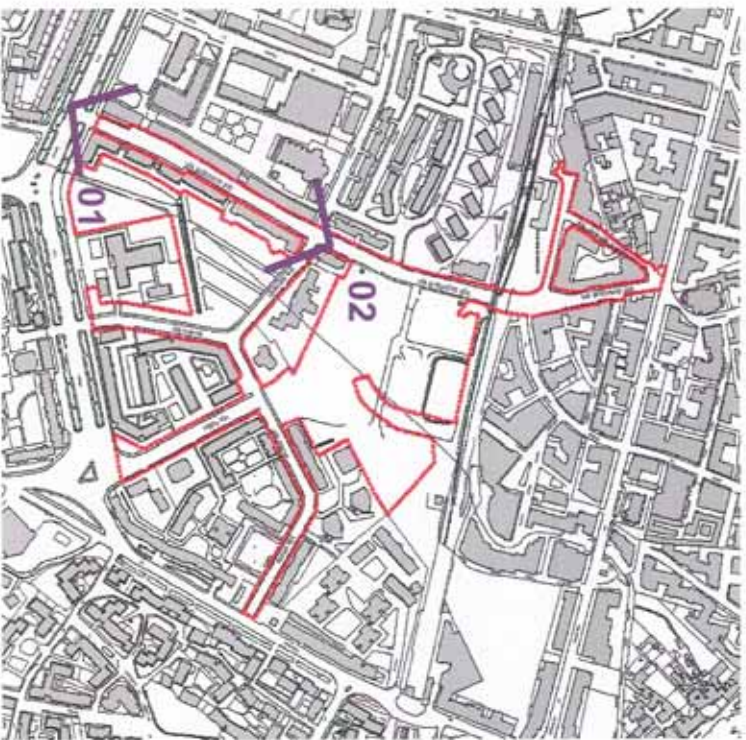




01



02



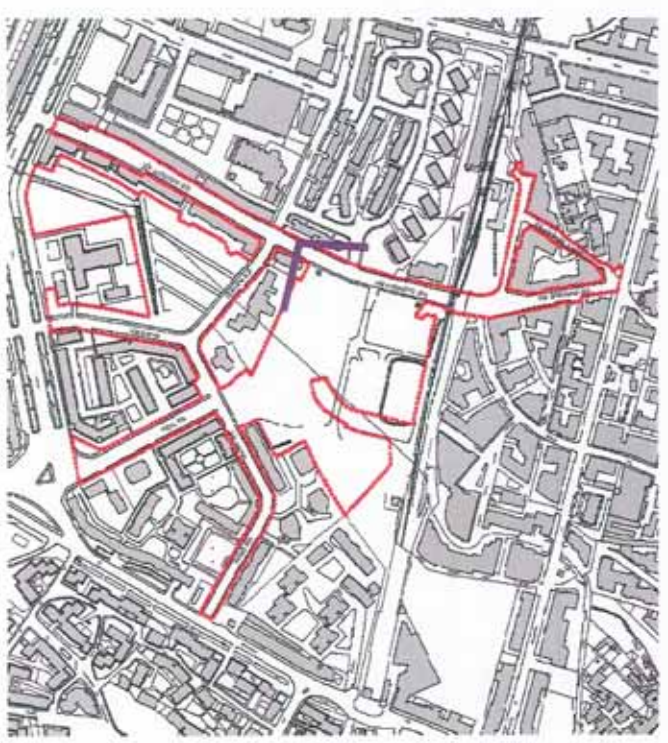
PER COPIA CONFORME  
IL DIRIGENTE  
ING. ANTONIO CAMPORA





218

PER COPIA CONFORME  
IL DIRIGENTE  
ING. ANTONIO CAMPORA

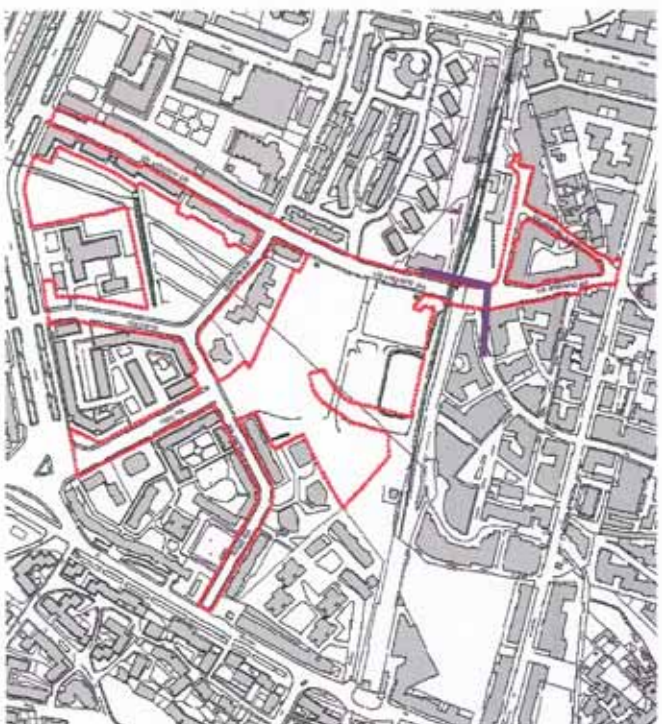






219

PER COPIA CONFORME  
IL DIRIGENTE  
ING. ANTONIO DAMPORA







200

PER COPIA CONFORME  
IL DIRETTORE  
ING. ANTONIO LAFORA





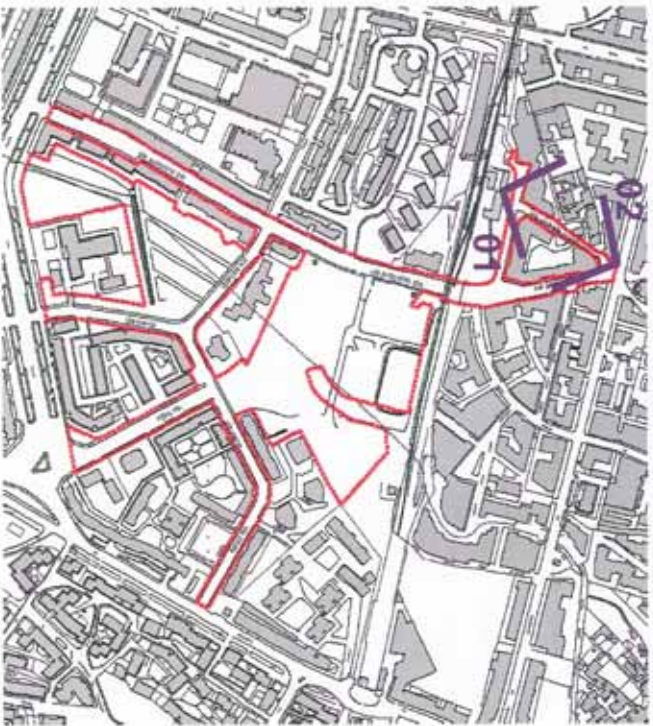


01



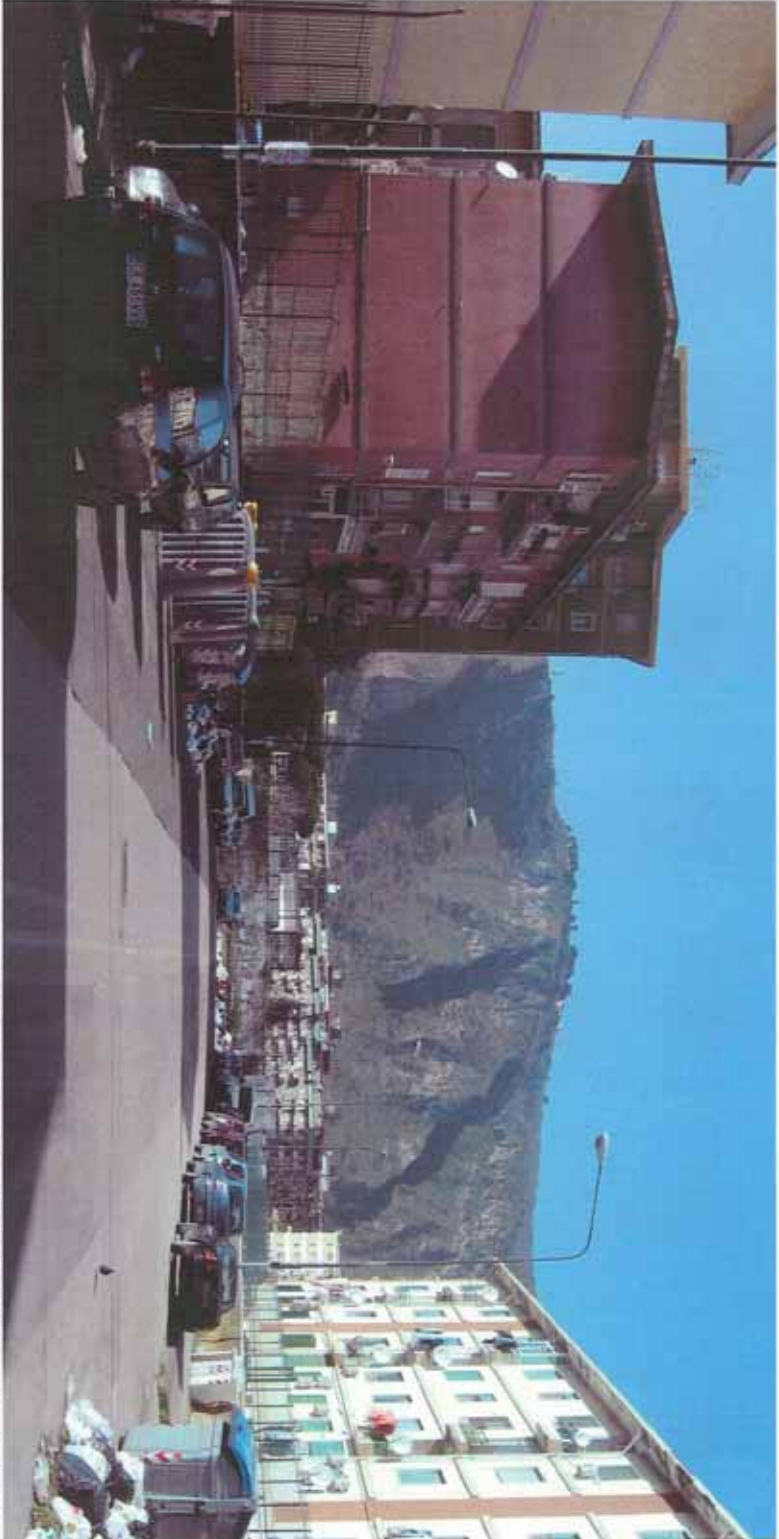
201

PER COPIA CONFORME  
 IL DIRIGENTE  
 ING. ANTONIO MAIORSI

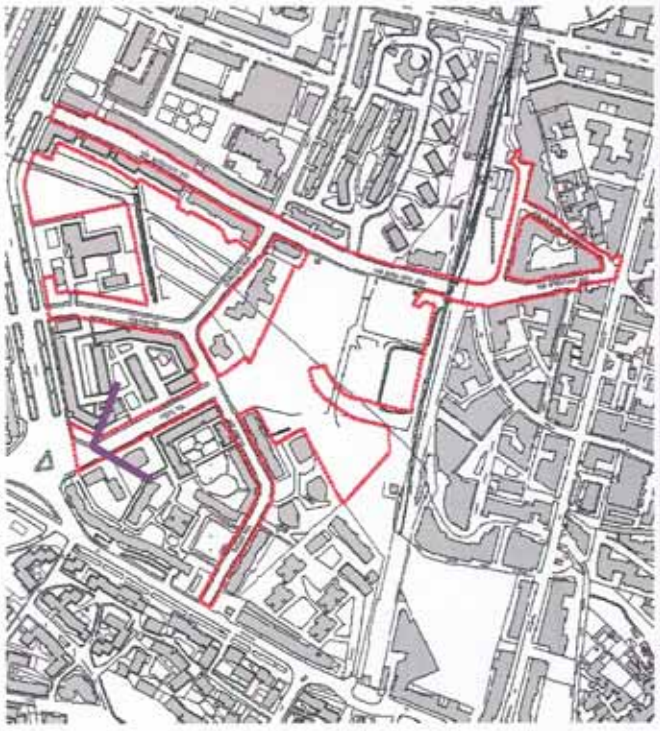


02





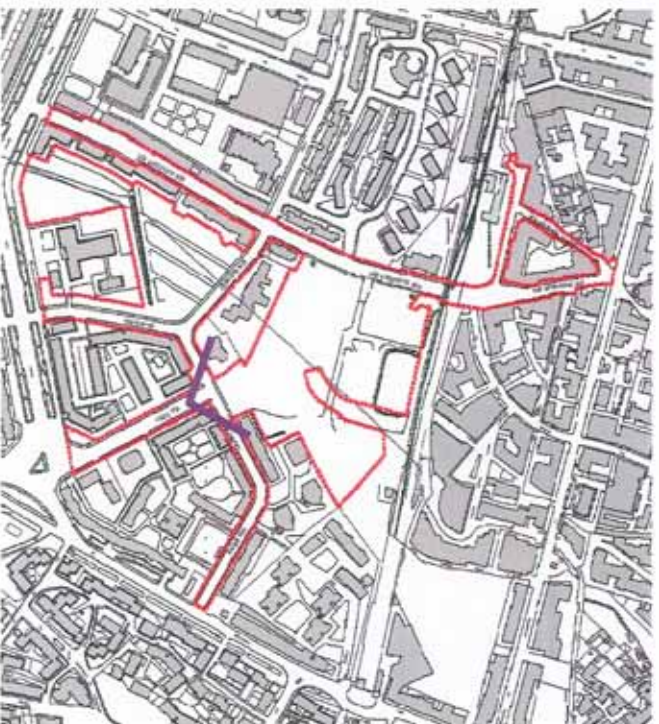
PER COPIA CONFORME  
IL DIR. GEN. CENZI  
ING. ANTONIO CALABROLA







PER COPIA CONFORME  
IL DISEGNO  
ING. ANTONIO CALABROSA







2924

PER COPIA CONFORME  
IL DIR. GEN. ZE  
ING. ANTONIO  
SANTOPOLA







01



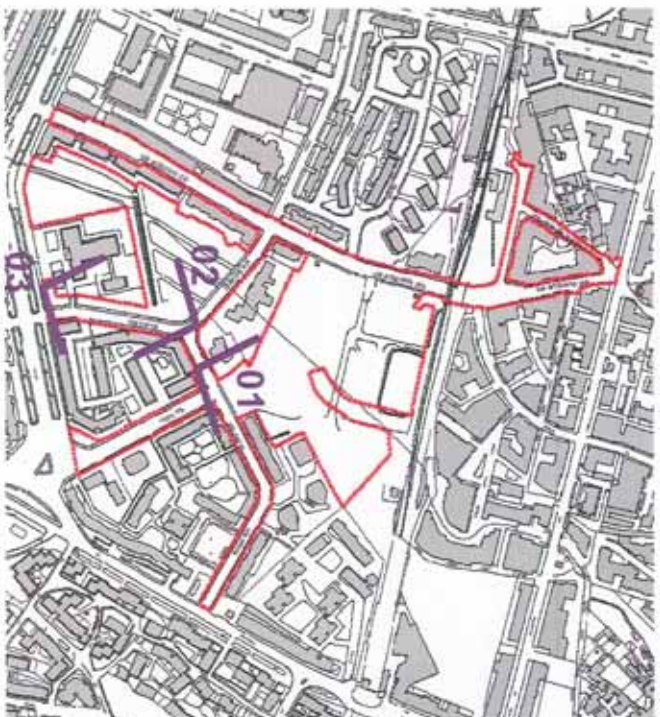
005

02

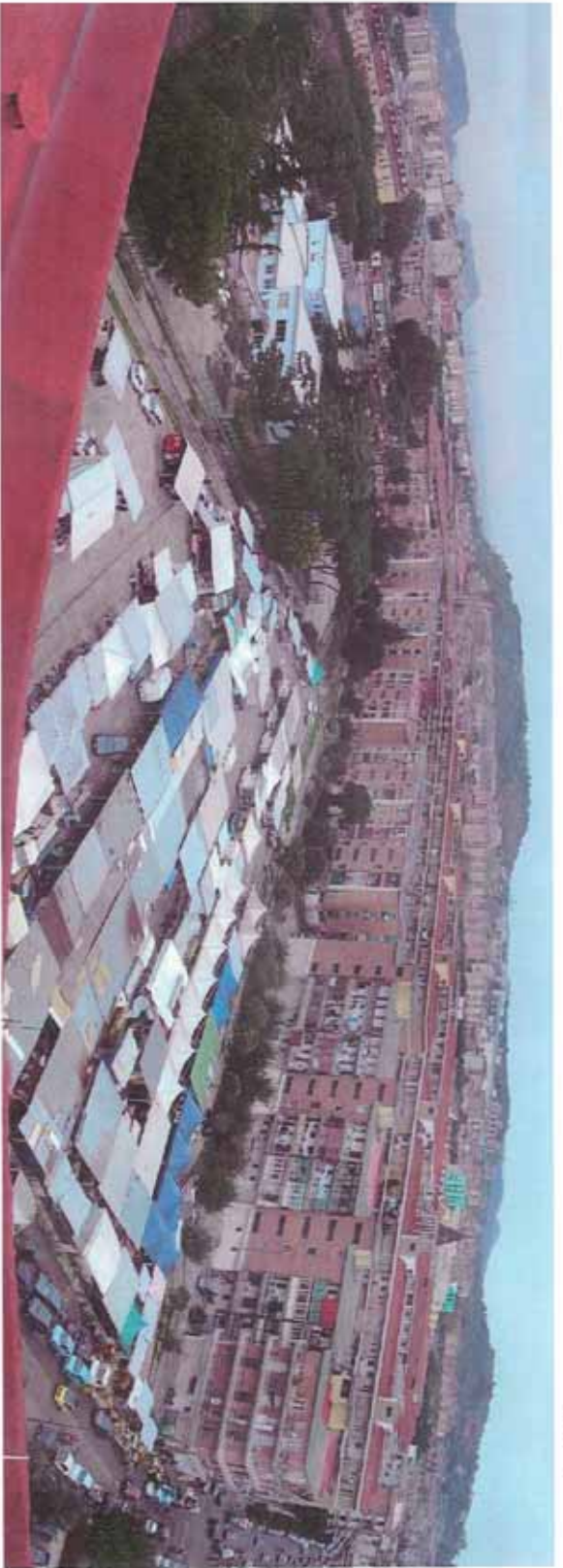


03

PER COPIA CONFORME  
 IL DILIGENTE  
 ING. ANTONIO CALIPORA

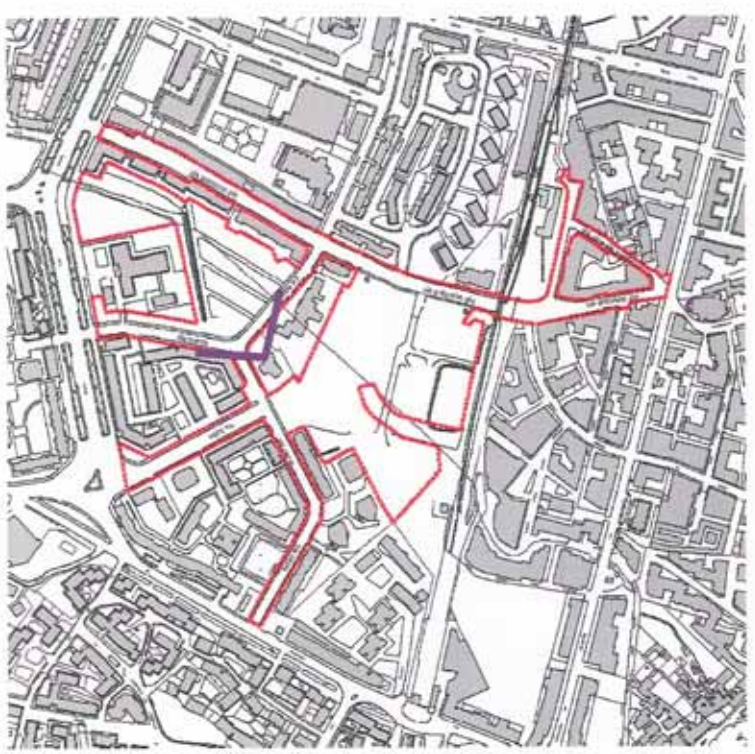






226

PER COPIA CONFORME  
IL DIR. DIST. DI  
ING. ANTONIO ANDREOLA







PER COPIA CONFORME  
IL DIR. GEN. TE  
ING. ANTONIO CAMPOS

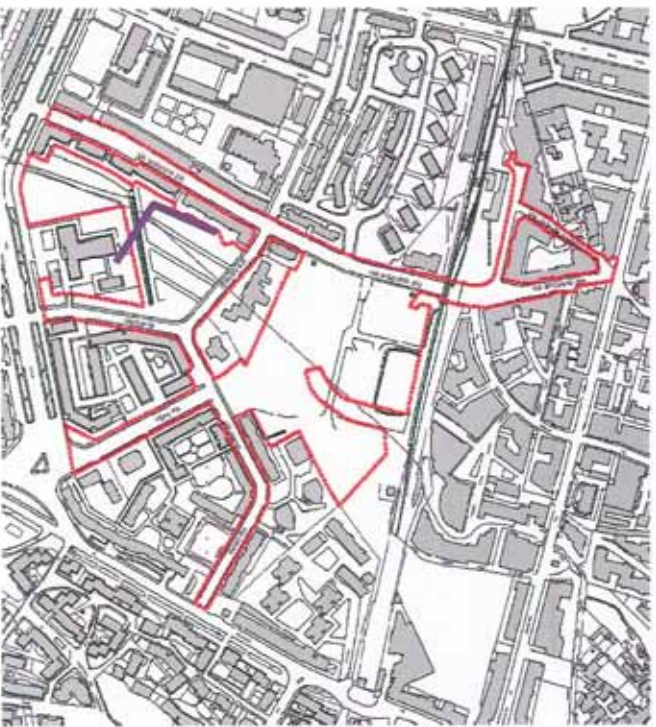






228

PER COPIA CONFORME  
IL DIRETTORE  
ING. ANTONIO  
MORERA

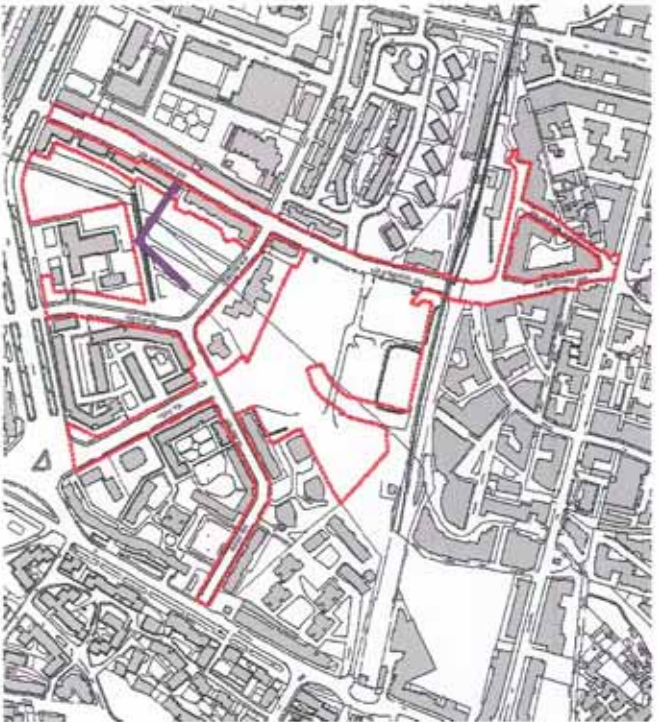






209

PER COPIA CONFORME  
IL DIRIGENTE  
ING. ANTONIO PERERA

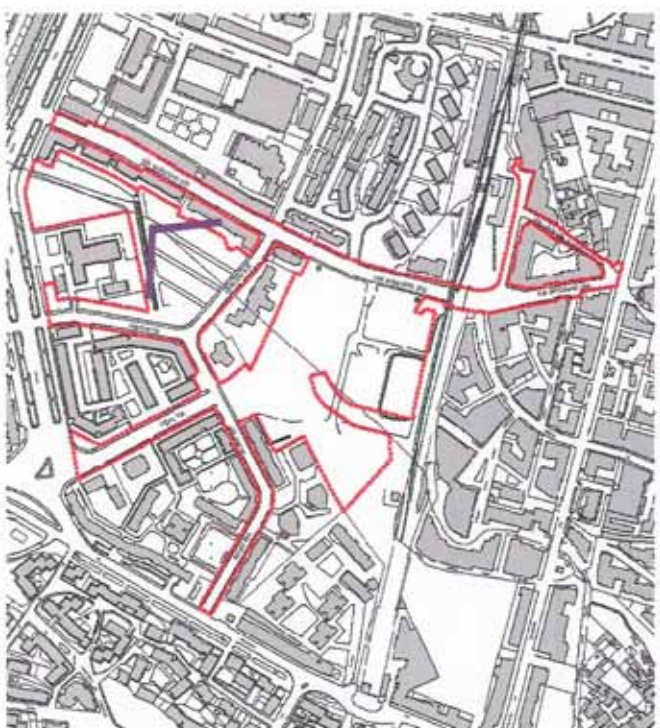






230

PER COPIA GONFORME  
IL DIRIGENTE  
ING. ANTONIO REGORA

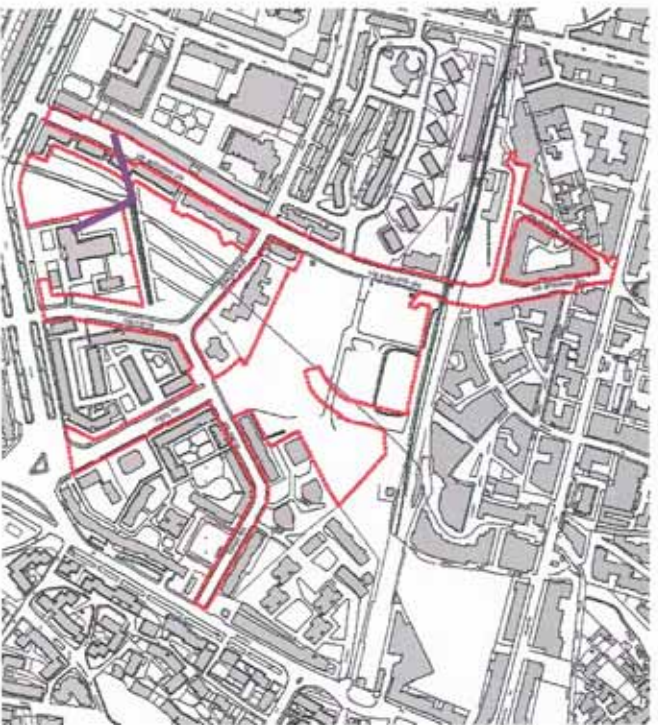






231

PER COPIA CONFORME  
IL DIRITTO  
ING. ANTONINO  
PROF. DI  
CIVILE

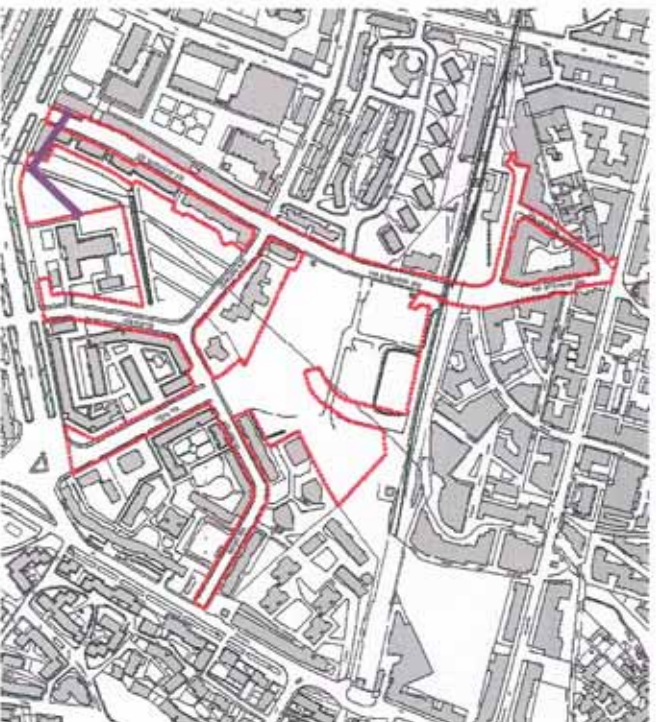






132

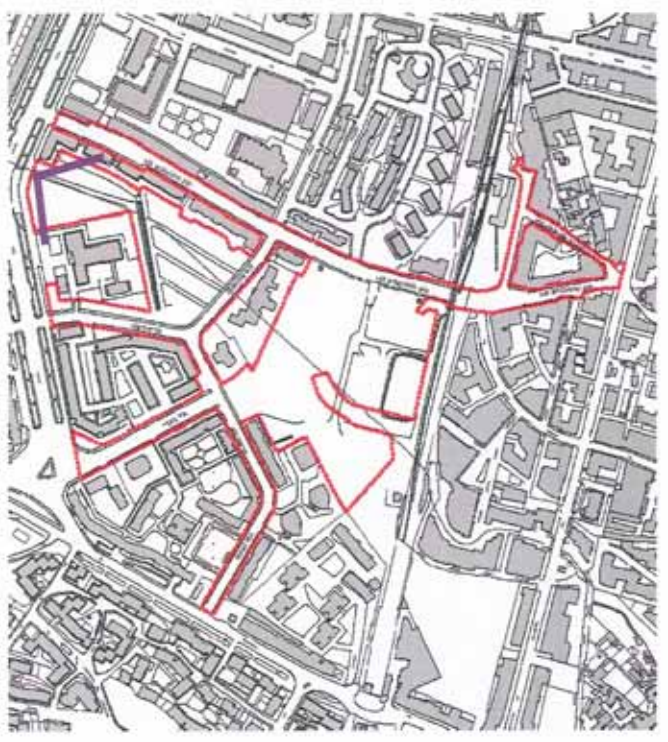
PER COPIA CONFORME  
IL DIRETTORE  
ING. ANTONIO ZAPPALÀ







PER COPIA CONFORME  
IL DIRETTORE  
ING. ANTONIO CALDEROLA







834

PER COPIA CONFORME  
IL DISSENTENTE  
ING. ANTONIO CALIPPORELA

