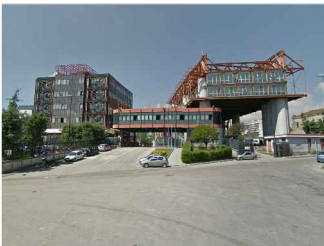


**COMUNE DI NAPOLI**

**Direzione centrale Infrastrutture, lavori pubblici e mobilità**

*Servizio Sistema delle infrastrutture di trasporto, delle opere pubbliche a rete e dei parcheggi*



## Grande progetto Riqualificazione urbana Napoli est

Realizzazione di sistemi di videosorveglianza  
e adeguamento della caserma dei Vigili del fuoco

## PROGETTO PRELIMINARE

**Gruppo di progettazione - Comune di Napoli**

**progettazione urbana e infrastrutture:** arch. Anna Rita Affortunato, ing. Marzia Di Caprio, arch. Francesca Spera, arch. Emilia Giovanna Trifiletti, geom. Luciano Marino, geom. Italo Ricci

**impianti fognari:** ing. Roberta Catapano, ing. Stefano Napolitano

**impianti pubblica illuminazione:** ing. Maria Teresa Giugliano

**aspetti geologici:** dott. Giuseppe Marzella

**verde e alberature stradali:** dott. Vincenzo Campolo

**aspetti urbanistici:** arch. Genoveffa Acampora

**Gruppo di progettazione - Comando provinciale Vigili del Fuoco di Napoli**

**coordinamento generale:** arch. Rosa D'Eliseo

**progettazione:** arch. Alfonso Giglio, ing. Luigi Madonna, ing. Giuseppe Salvati

**coordinamento sicurezza in fase di progettazione:** arch. Alfonso Giglio, ing. Giuseppe Salvati



**Supporto Tecnico Scientifico - Università degli studi di Napoli "Federico II"**

prof. arch. Luigi Piemontese, prof. ing. Emidio Nigro, prof. ing. Giorgio Serino

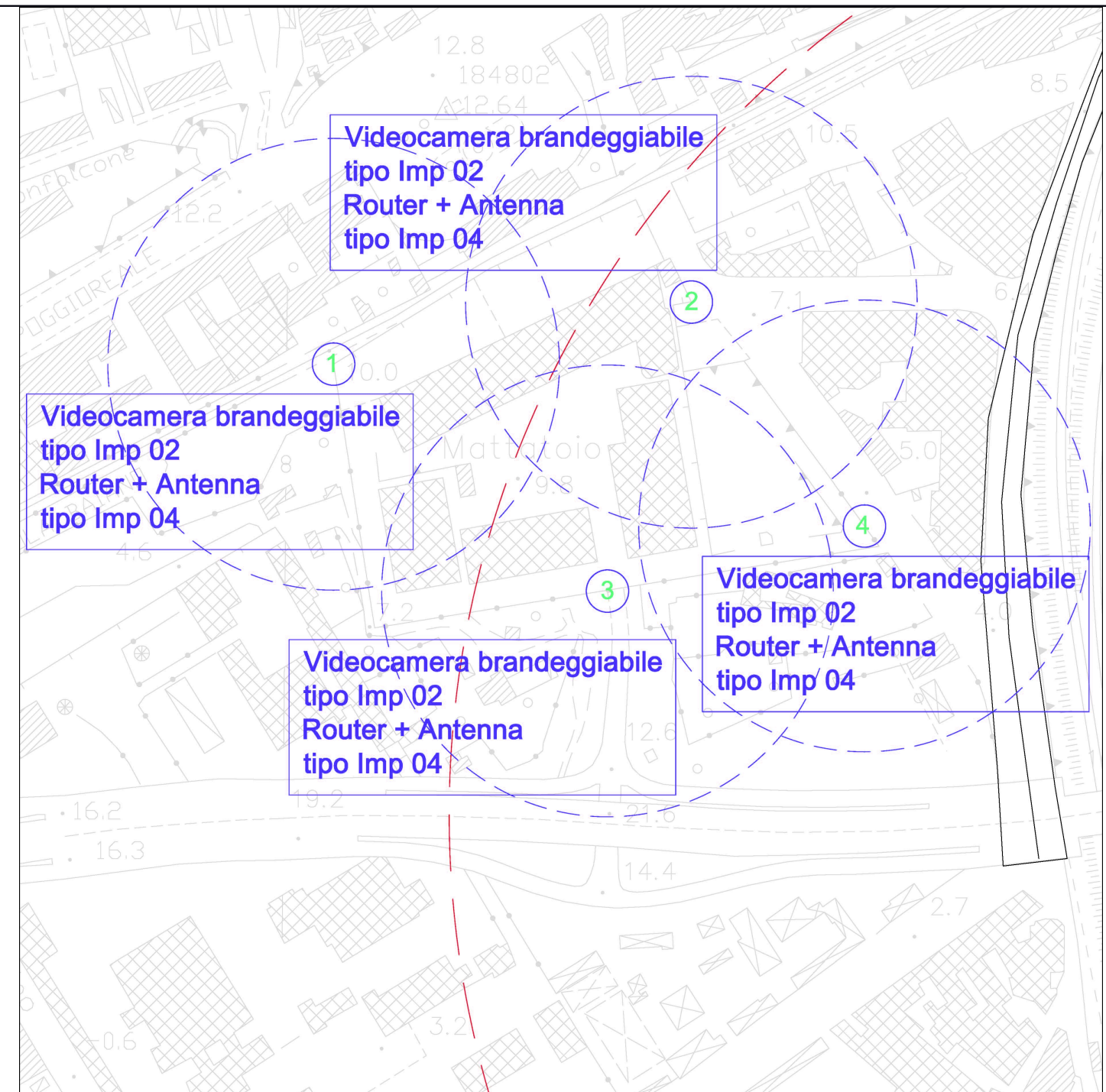


**Responsabile del procedimento**

arch. Giuseppe Pulli

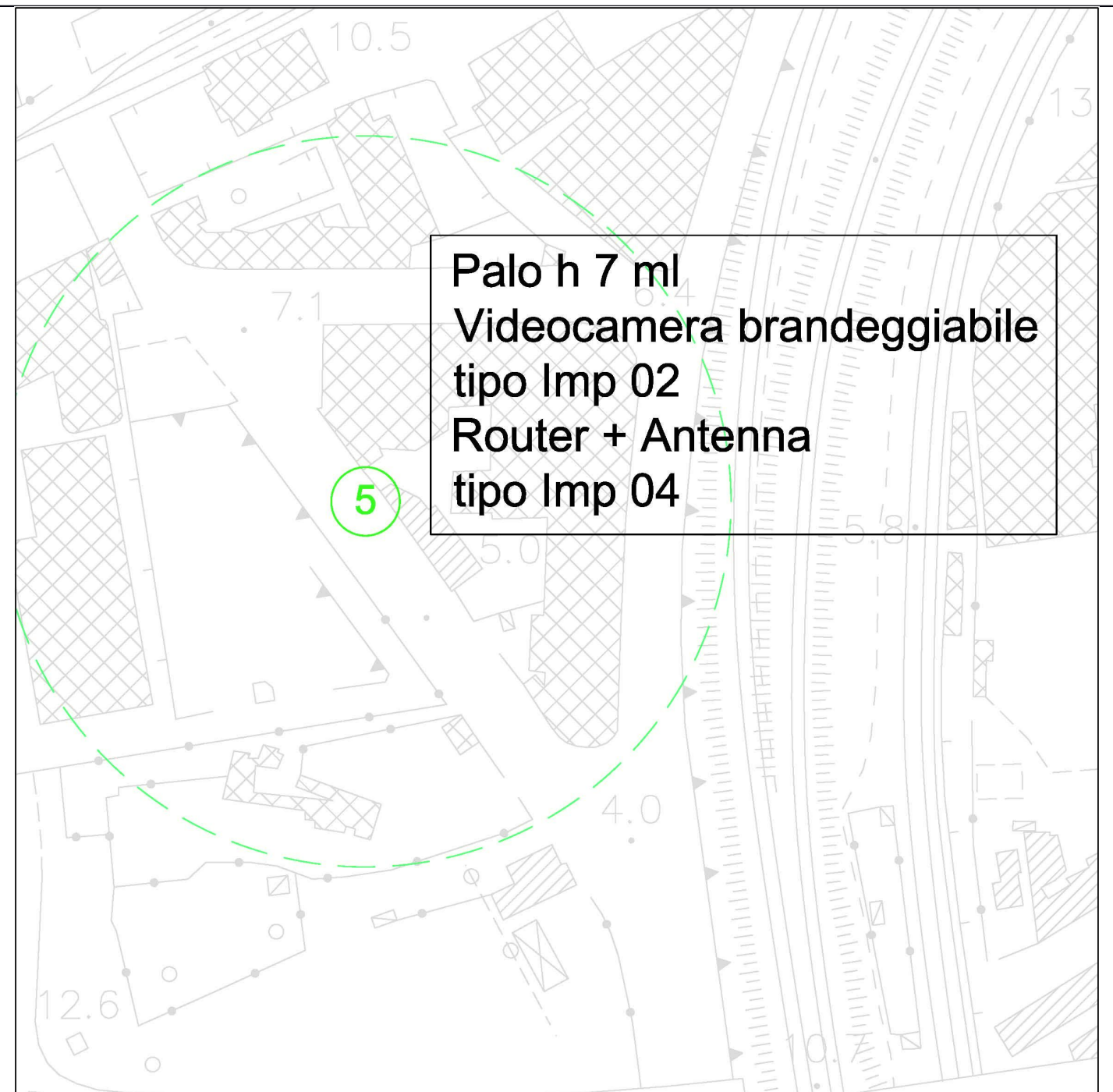
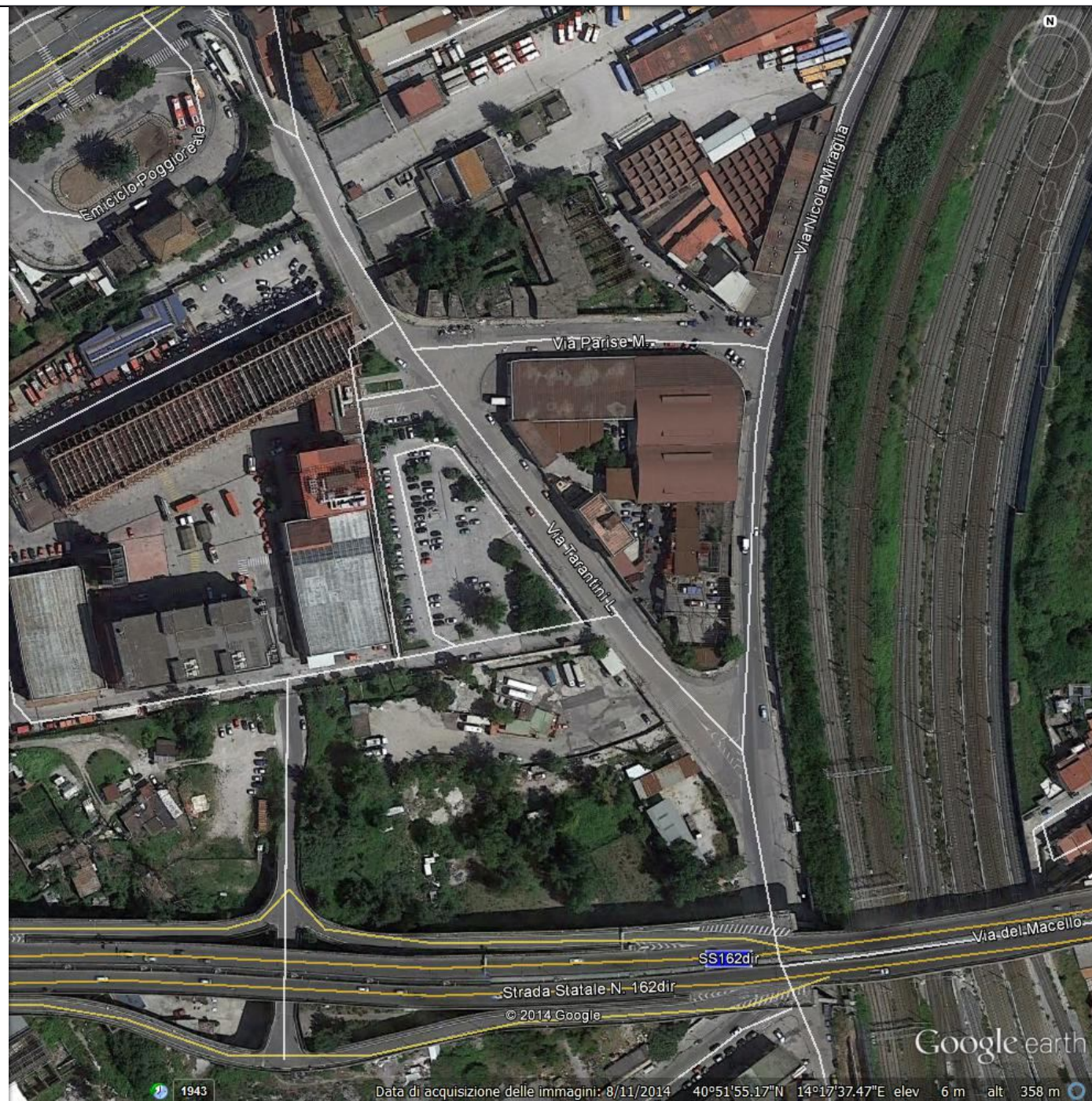
Localizzazione e caratteristiche delle videocamere - Estratti  
planimetrici - Estratti foto aeree georeferenziate





*Sistema di videosorveglianza nell'ambito del Grande Progetto Napoli Est*





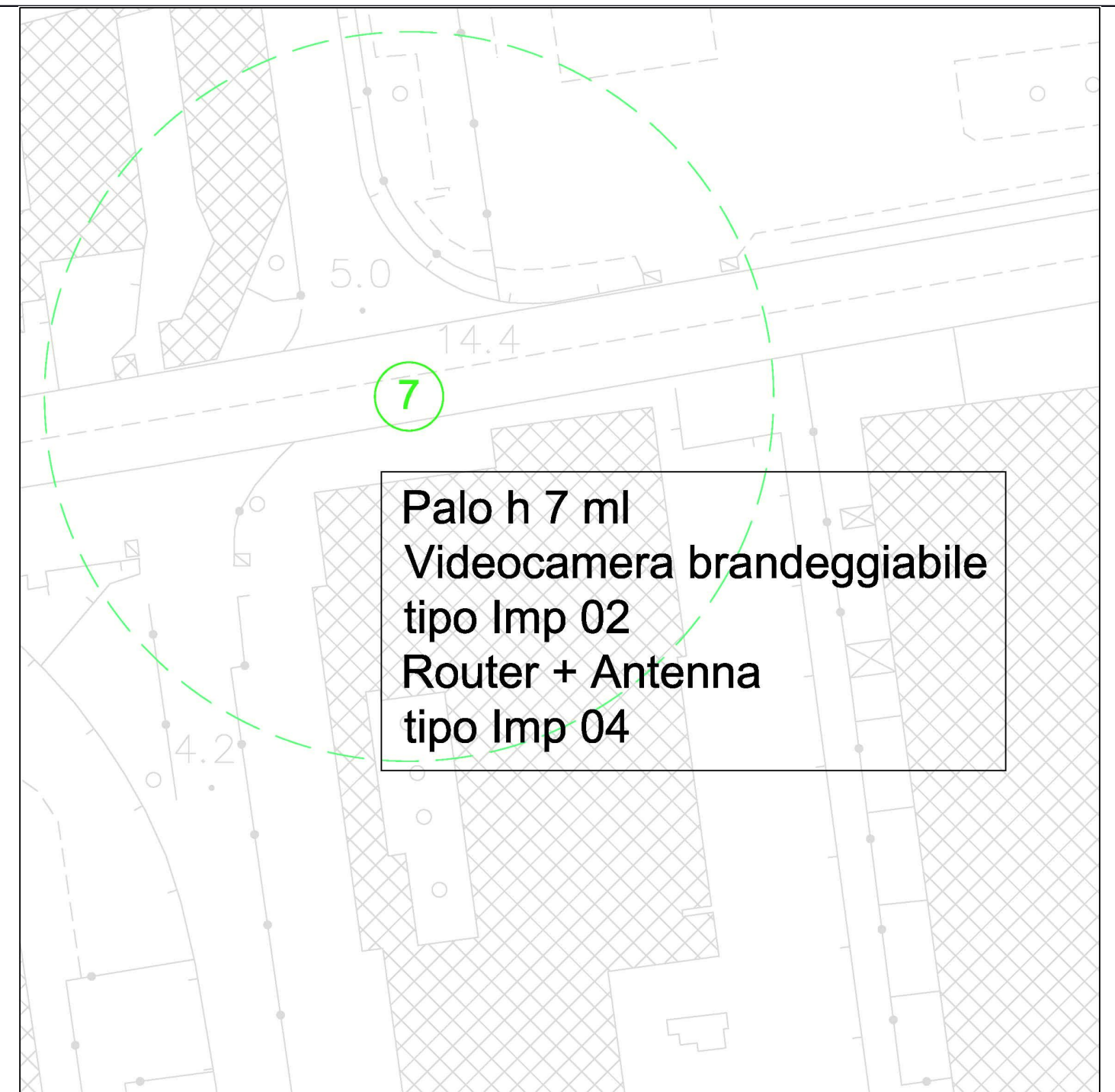
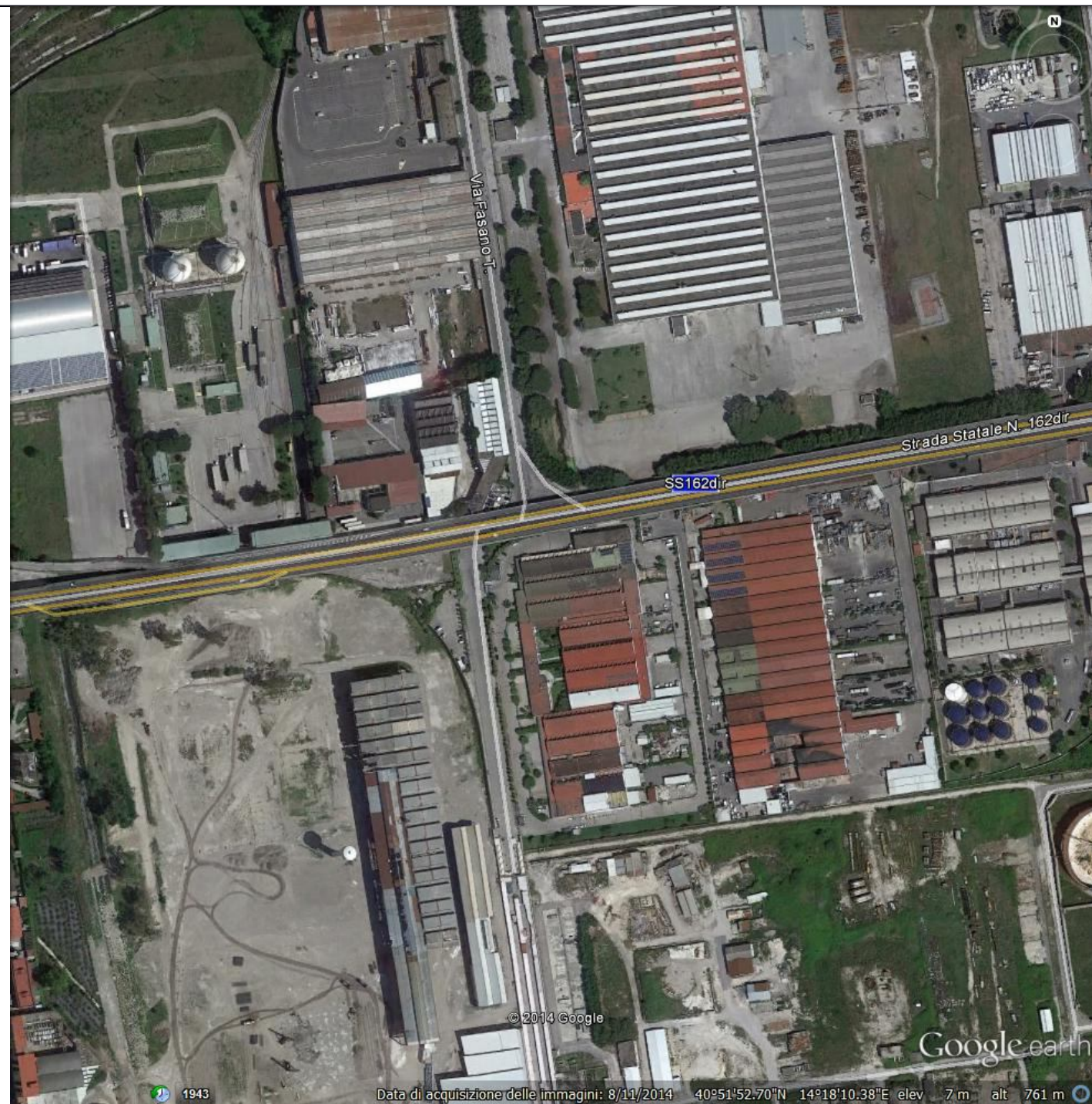




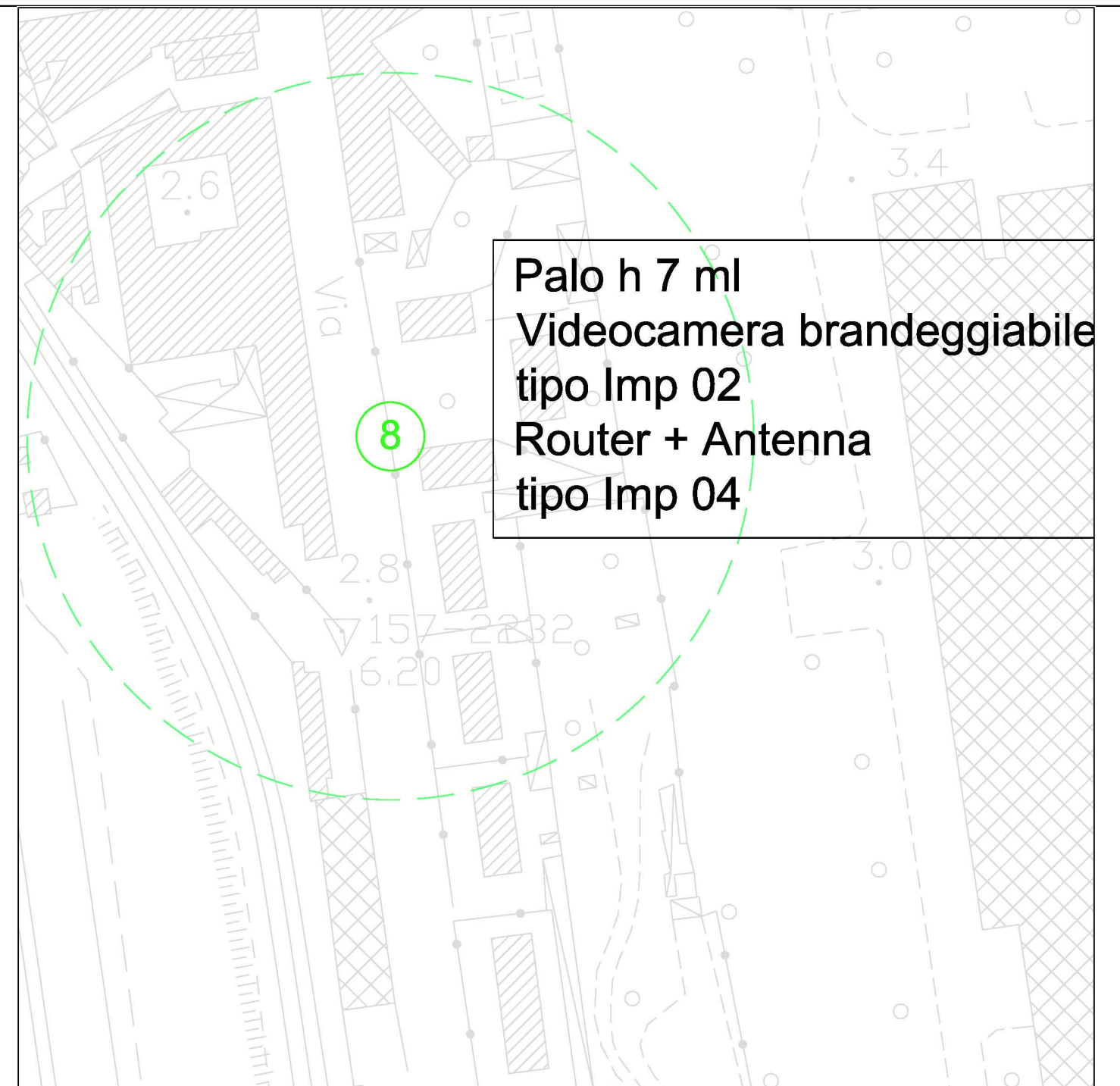
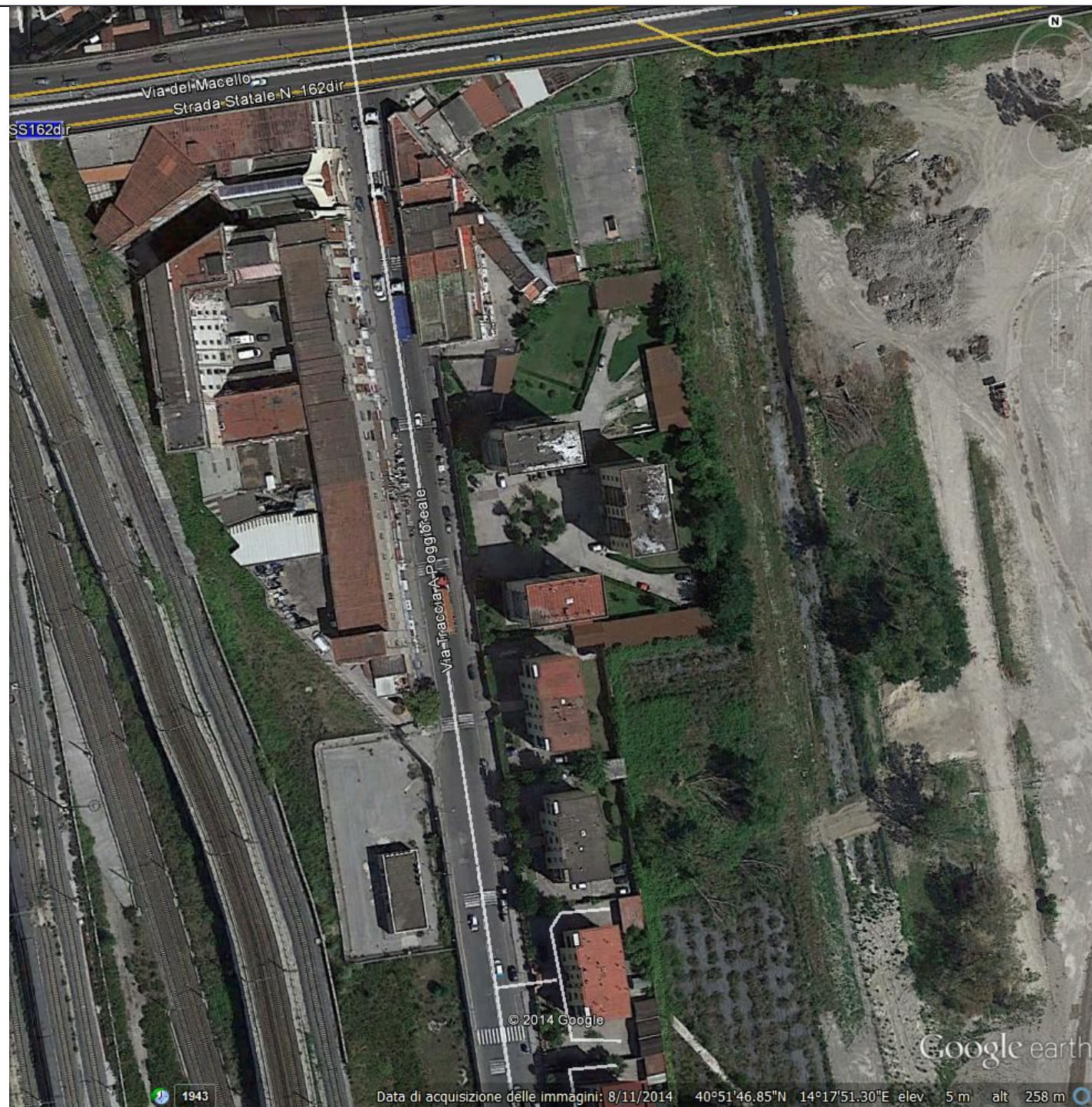
**Palo h 25 ml**  
**Videocamera brandeggiabile**  
**tipo Imp 01**  
**Stazione meteo**  
**tipo Imp 03**  
**Router + Antenna**  
**tipo Imp 04**

6

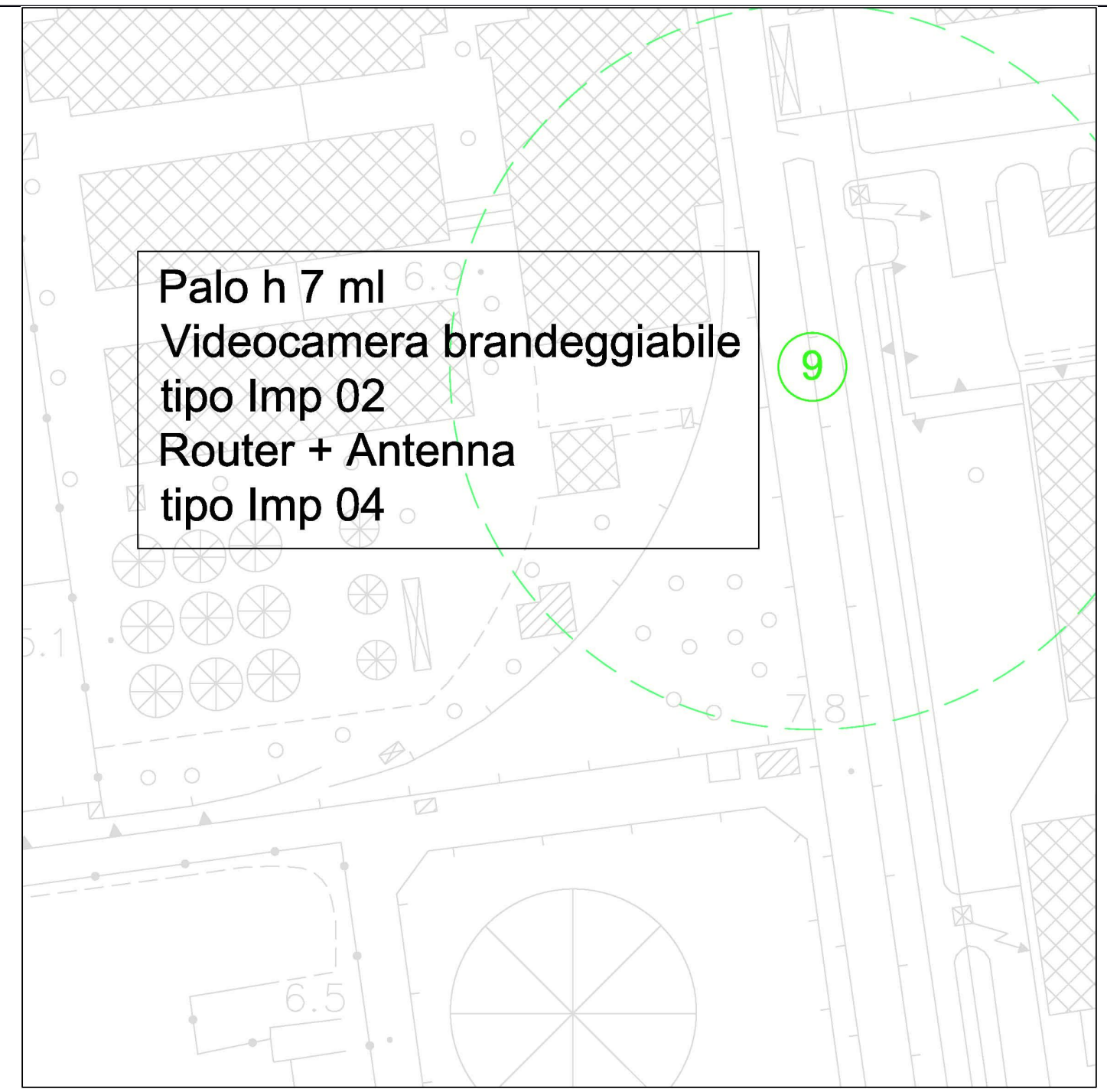
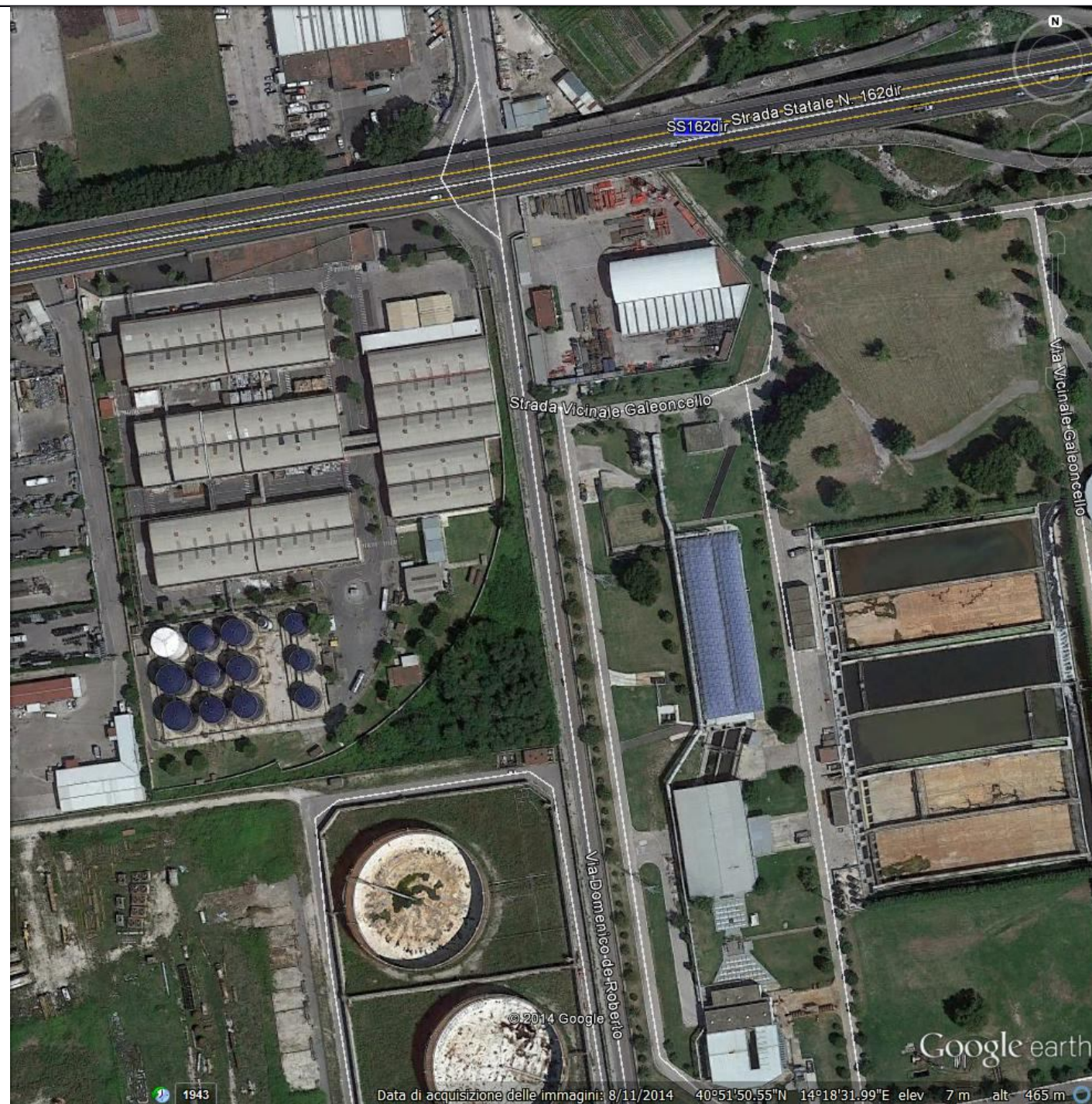






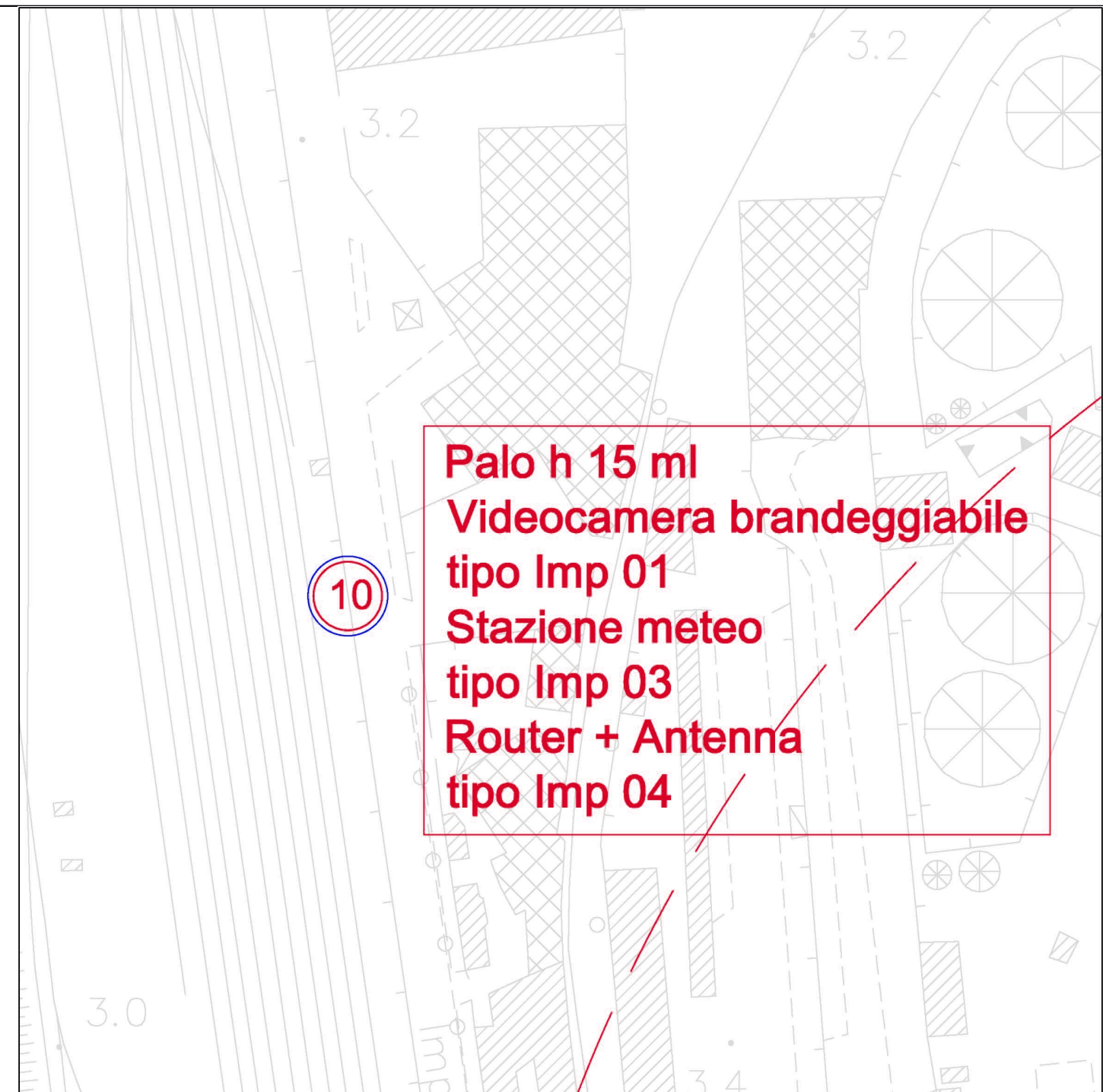
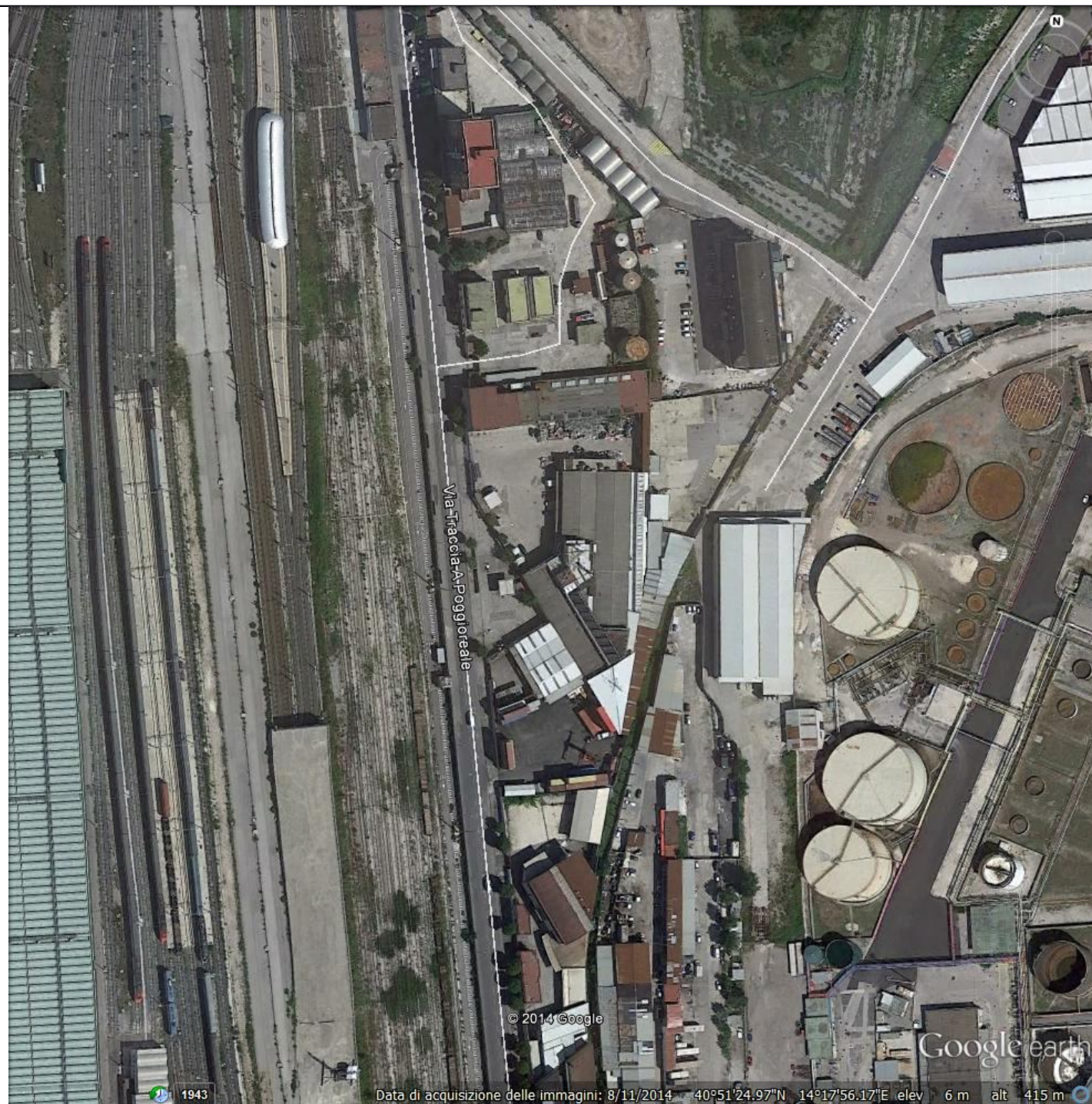






Palo h 7 ml  
 Videocamera brandeggiabile  
 tipo Imp 02  
 Router + Antenna  
 tipo Imp 04

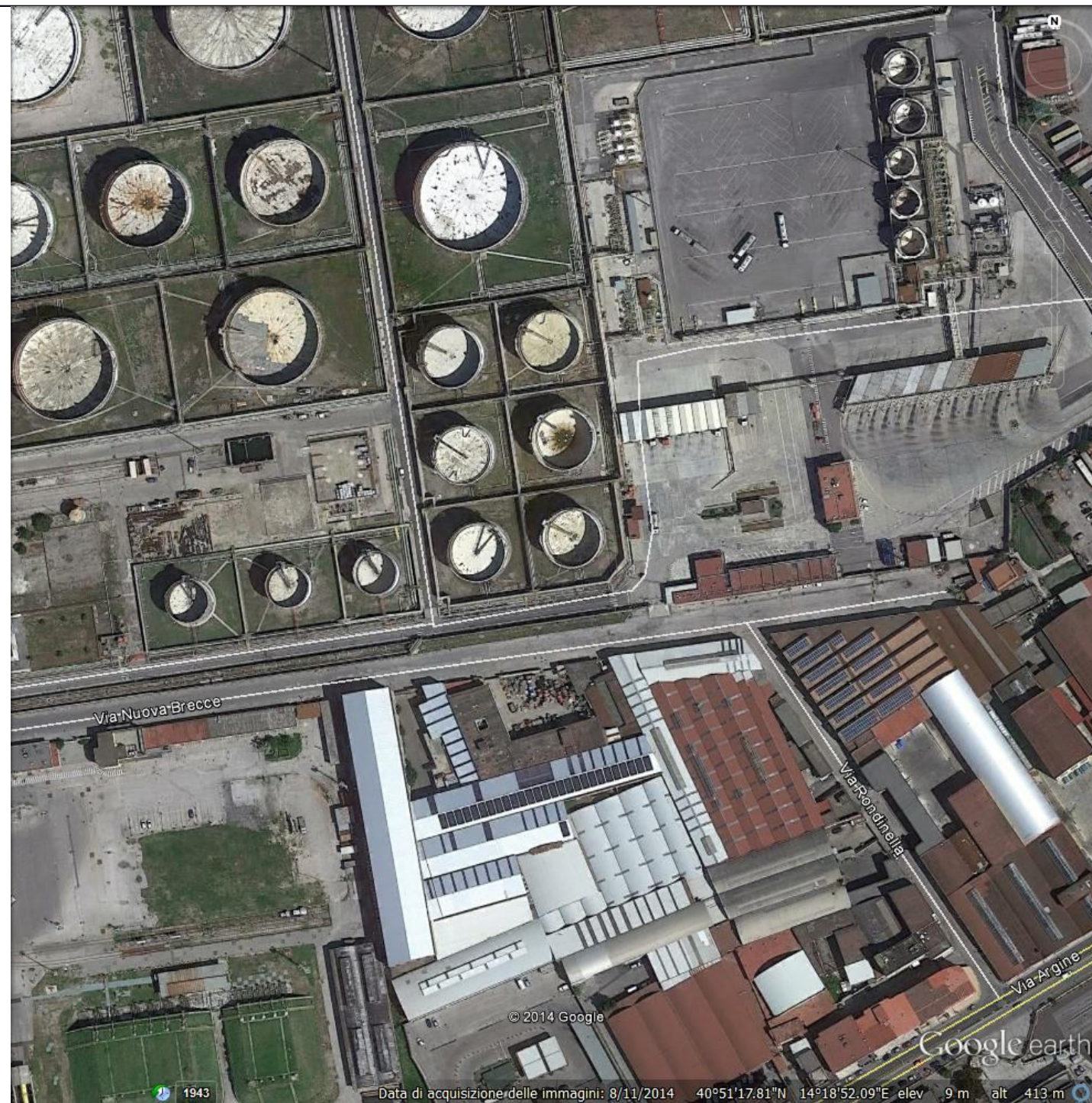




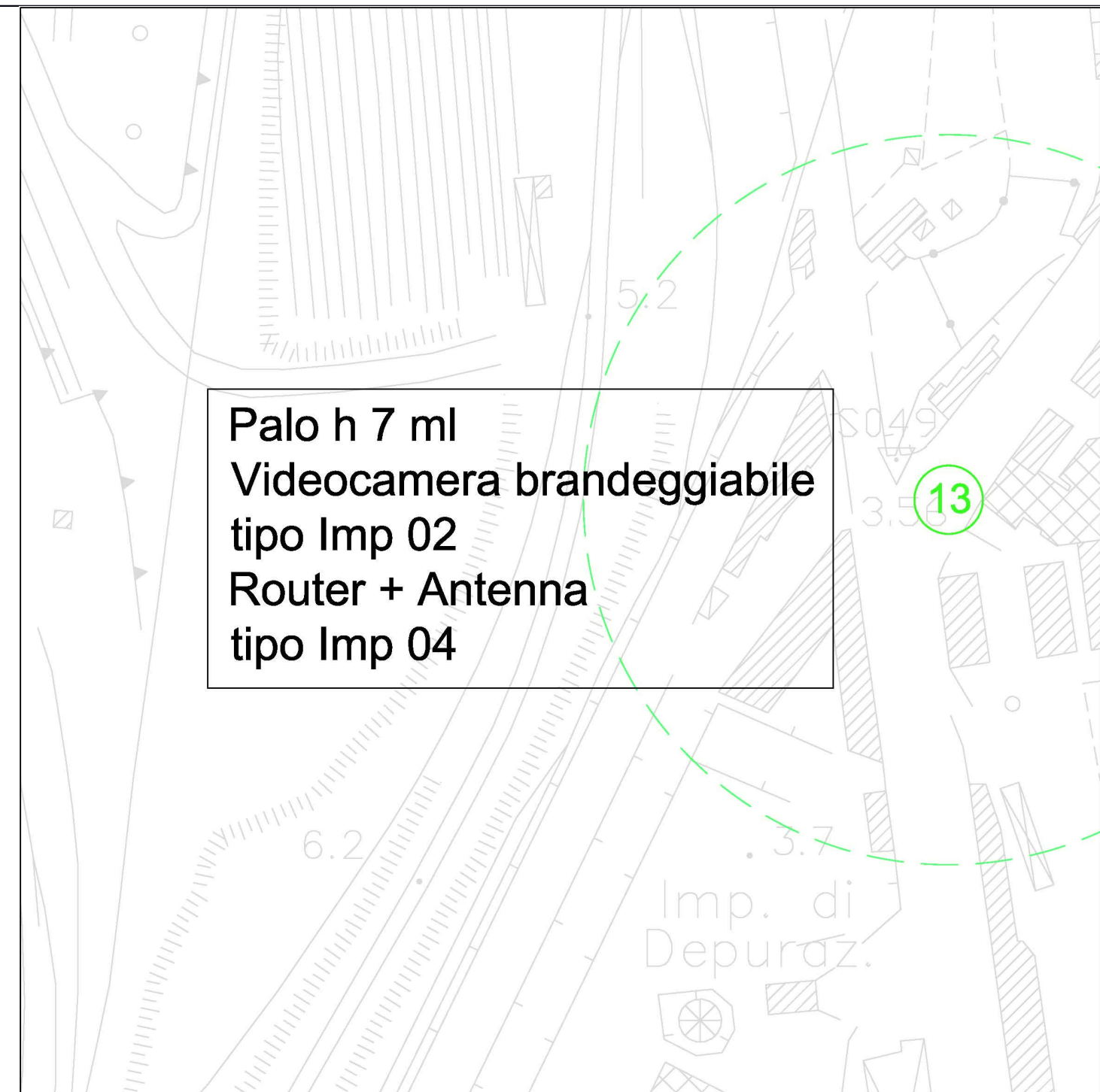






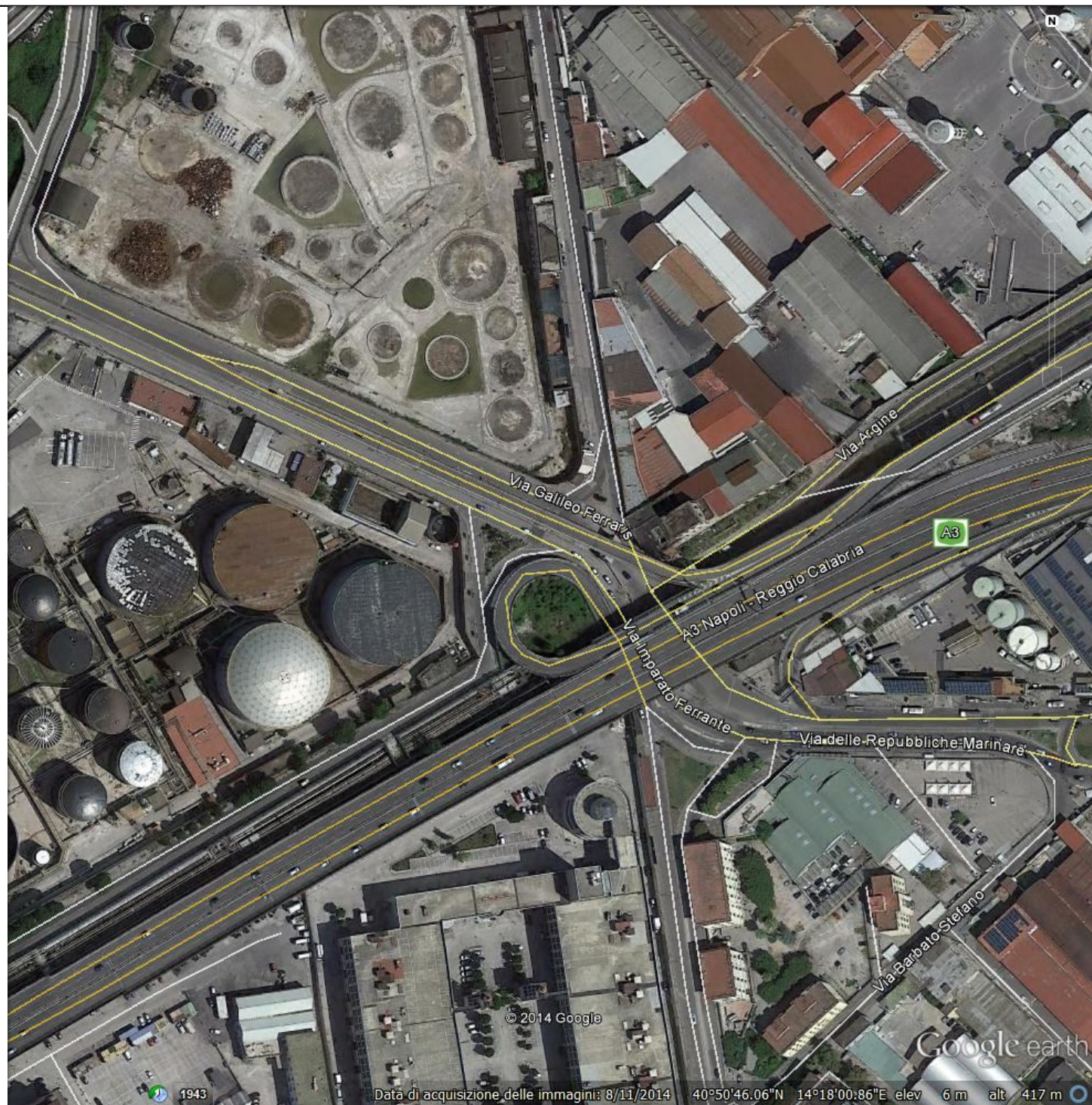




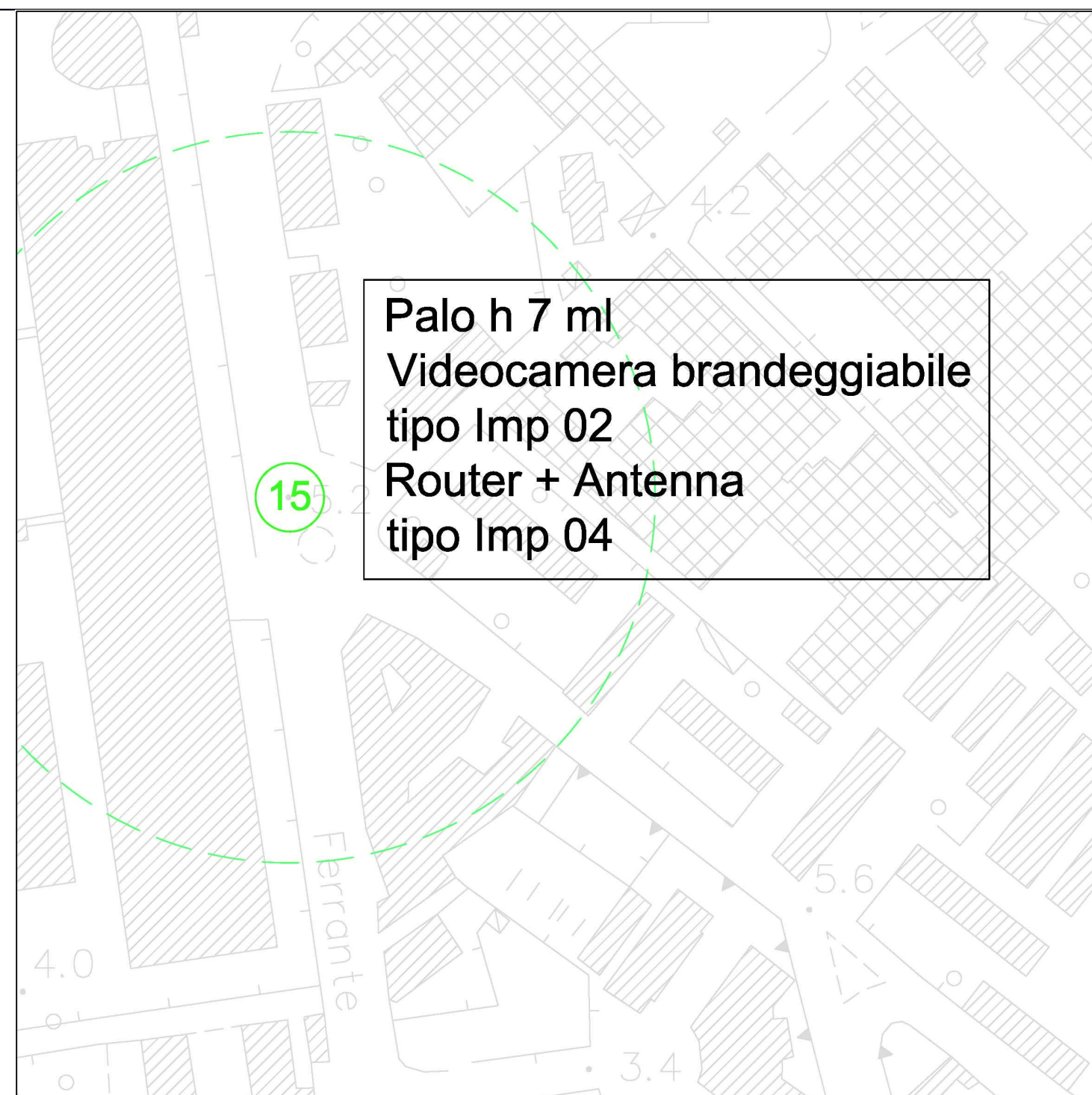
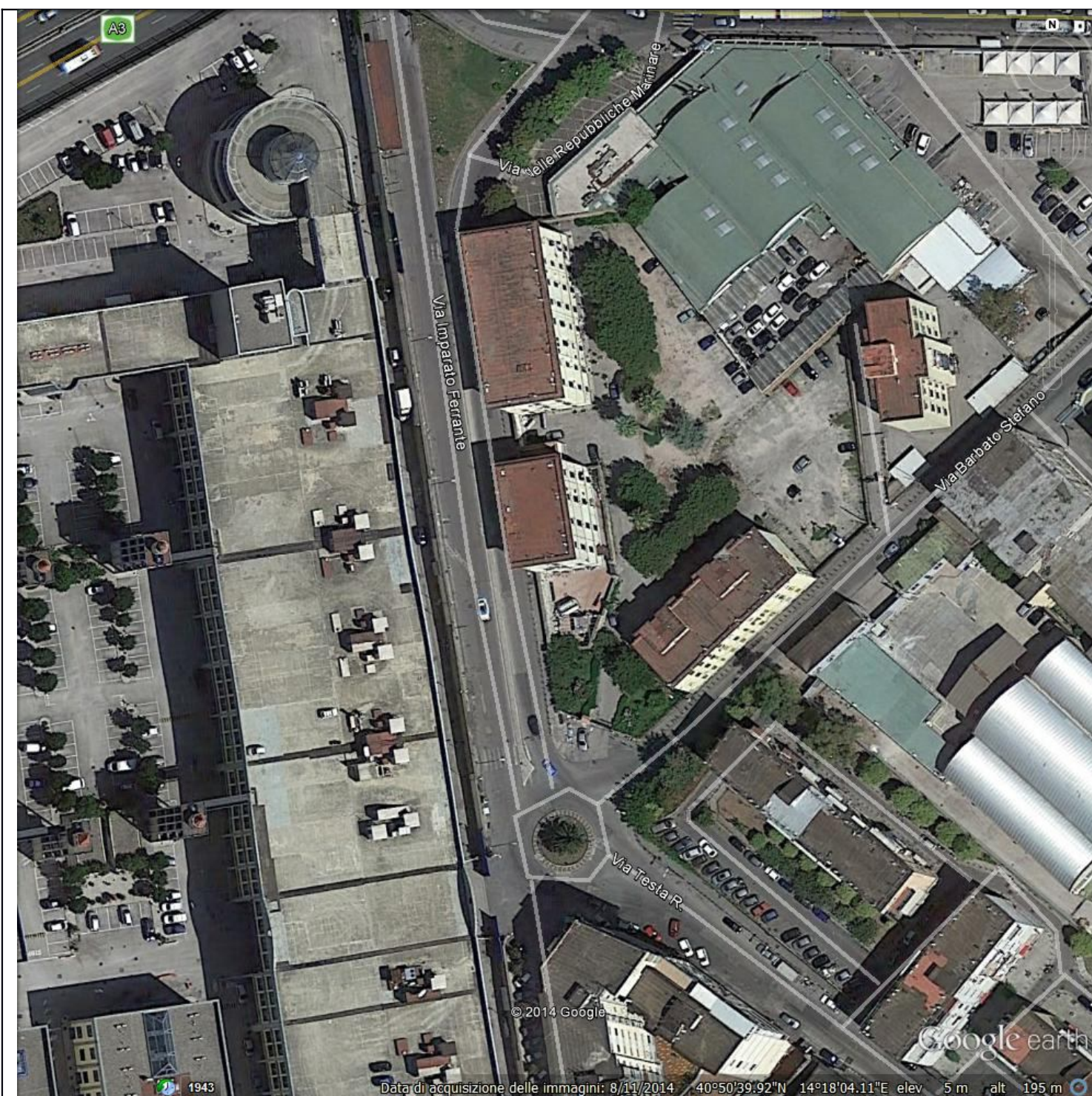


Palo h 7 ml  
 Videocamera brandeggiabile  
 tipo Imp 02  
 Router + Antenna  
 tipo Imp 04









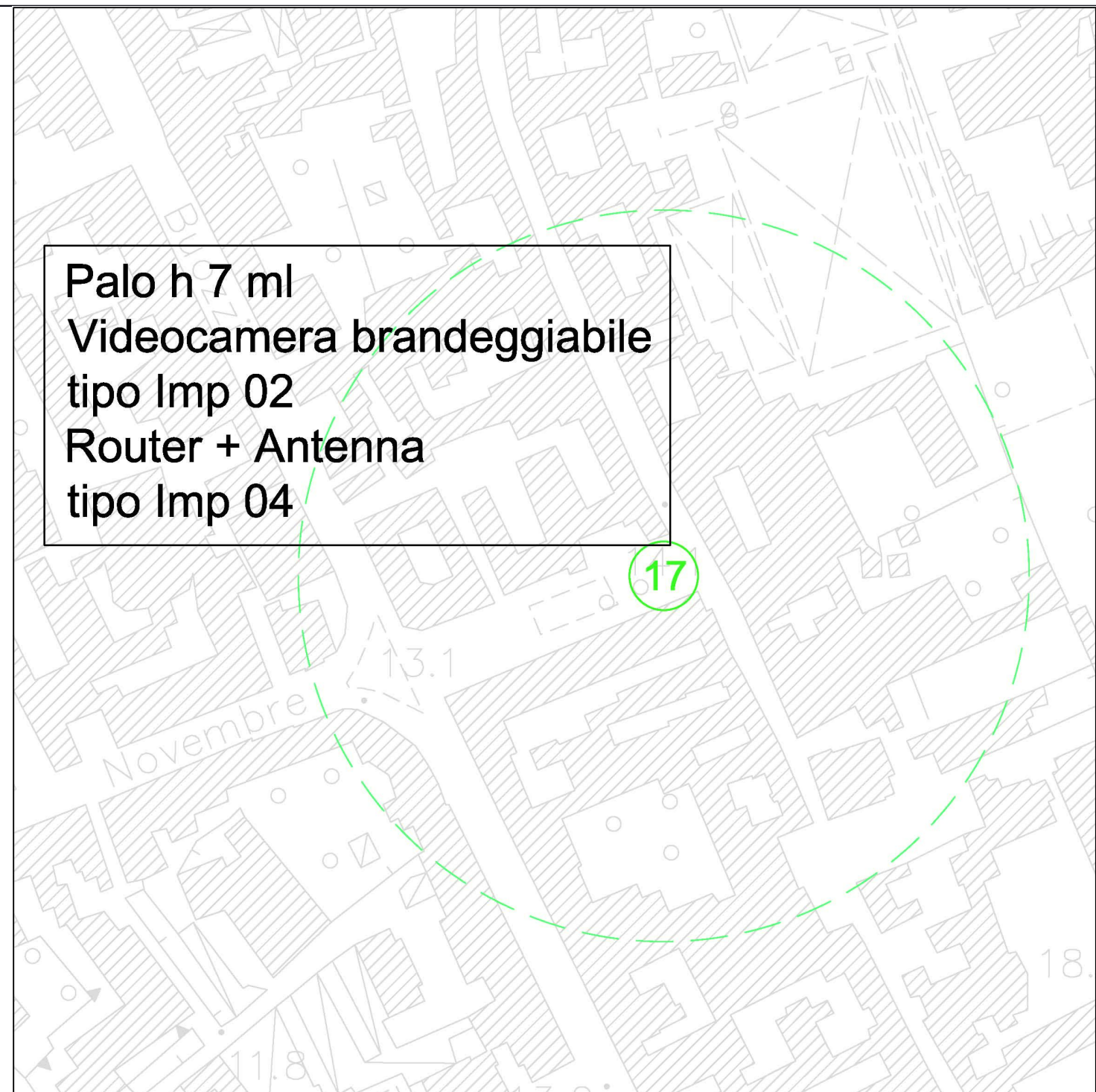




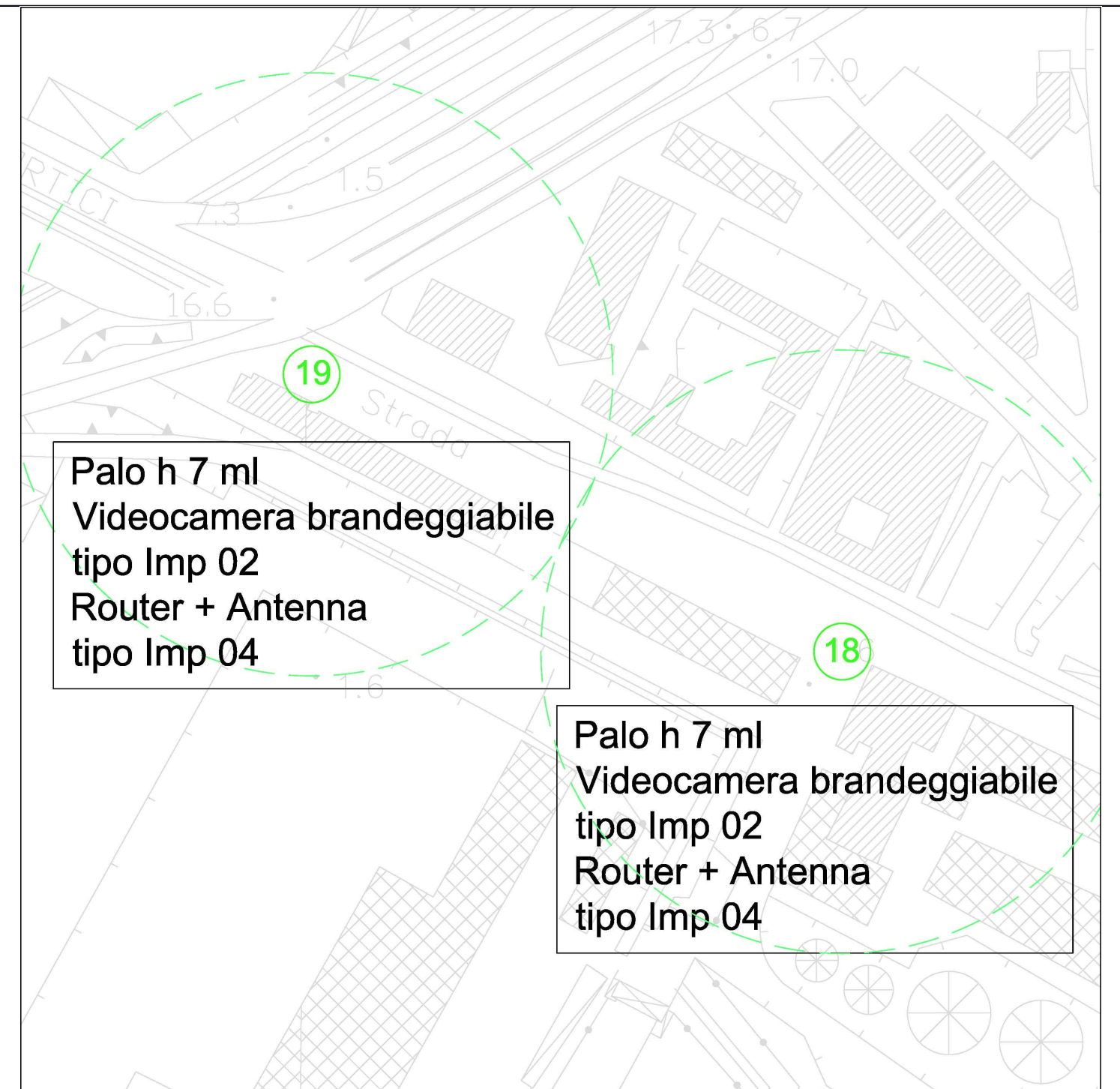
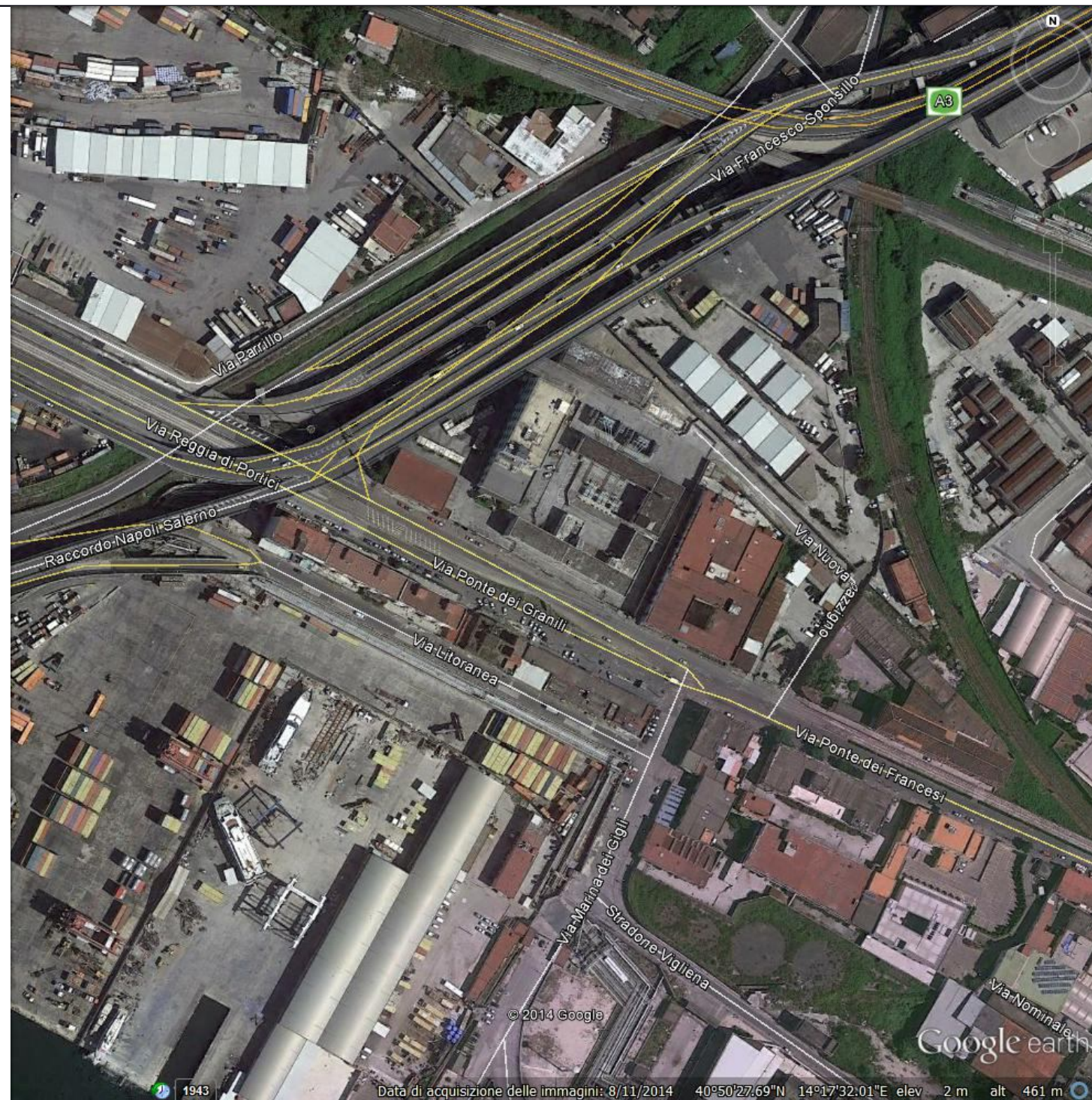
Palo h 7 ml  
Videocamera brandeggiabile  
tipo Imp 02  
Router + Antenna  
tipo Imp 04

16

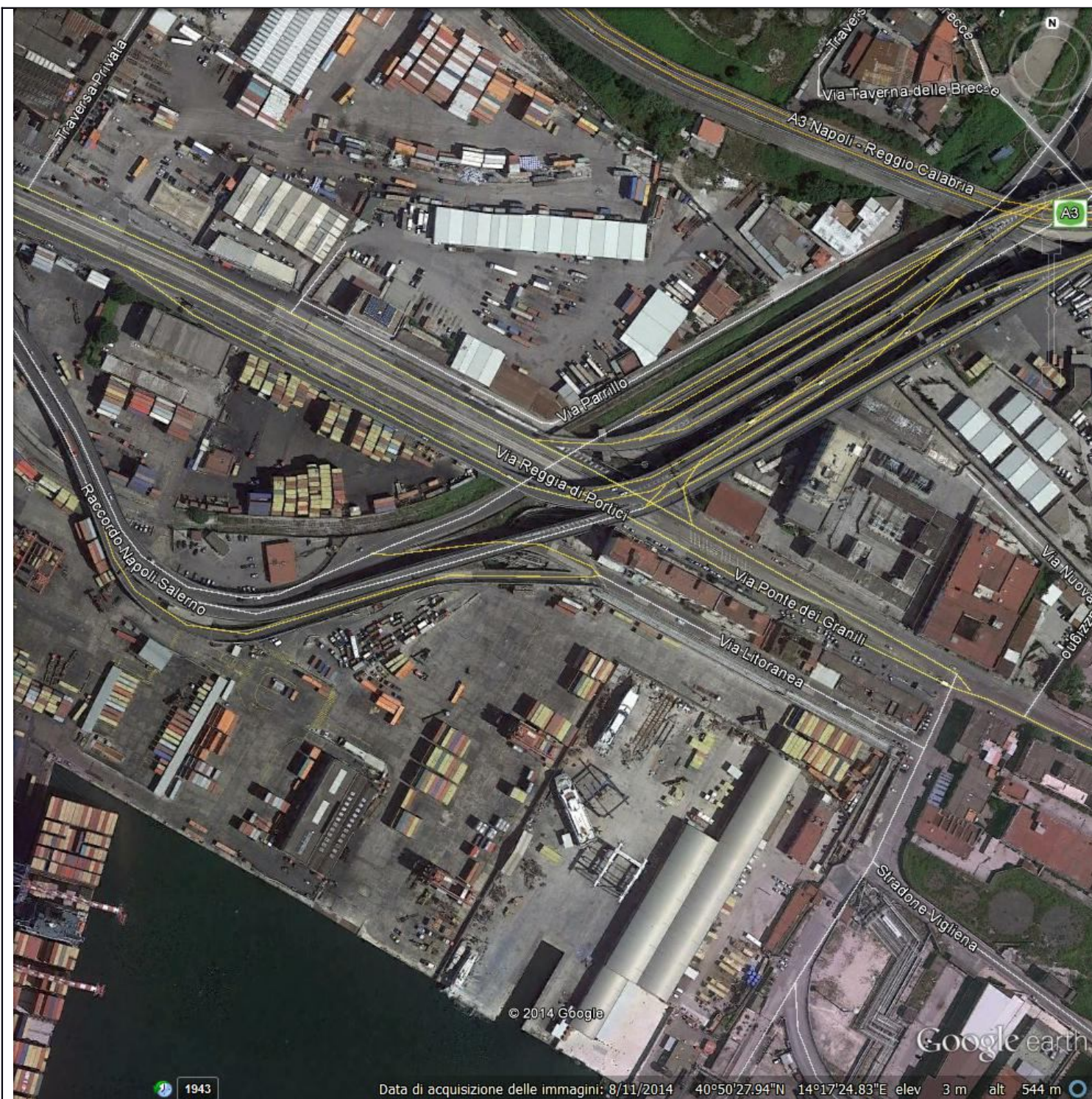












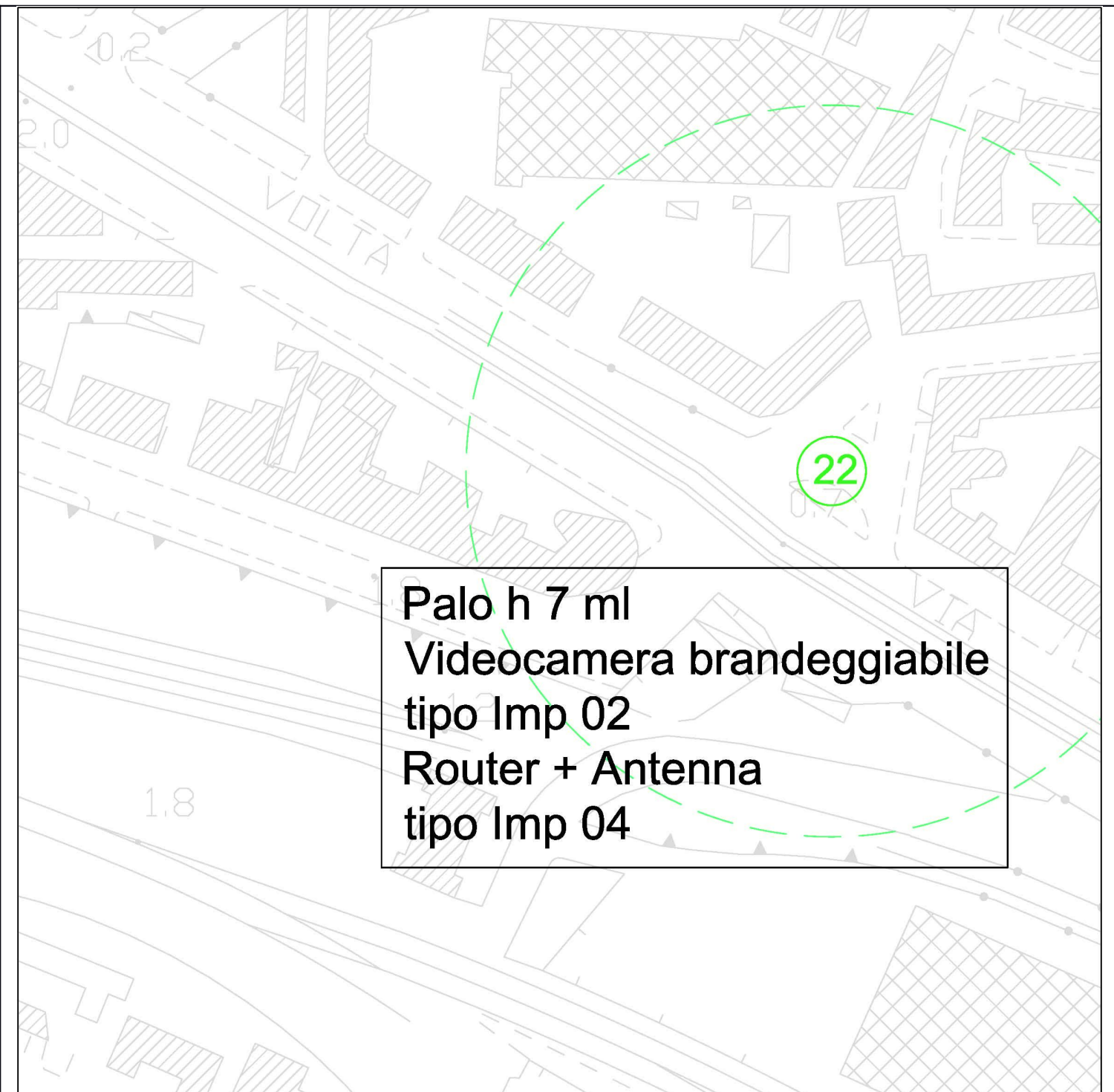
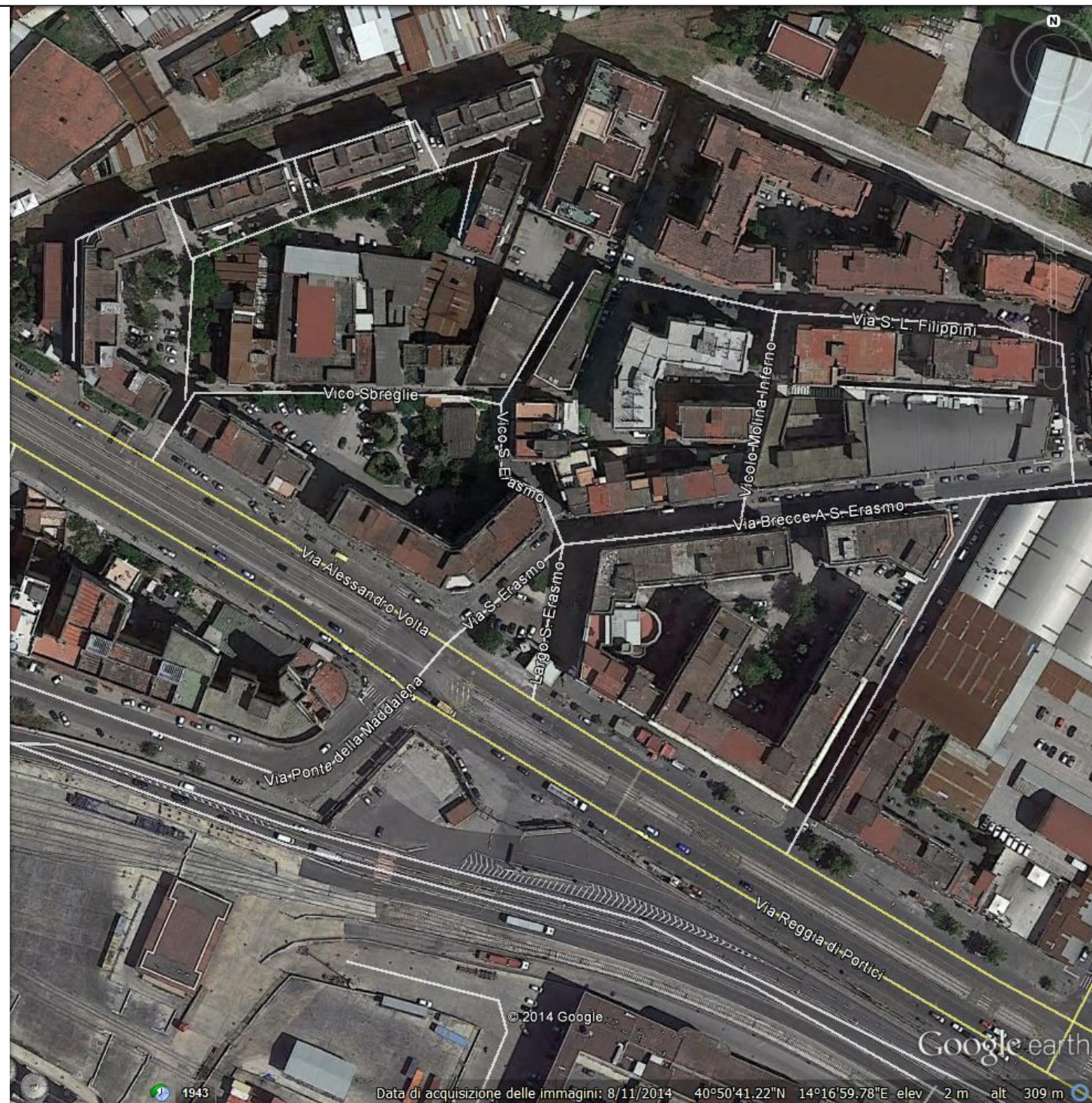
**Palo h 25 ml**  
**Videocamera brandeggiabile**  
**tipo Imp 01**  
**Stazione meteo**  
**tipo Imp 03**  
**Router + Antenna**  
**tipo Imp 04**

20

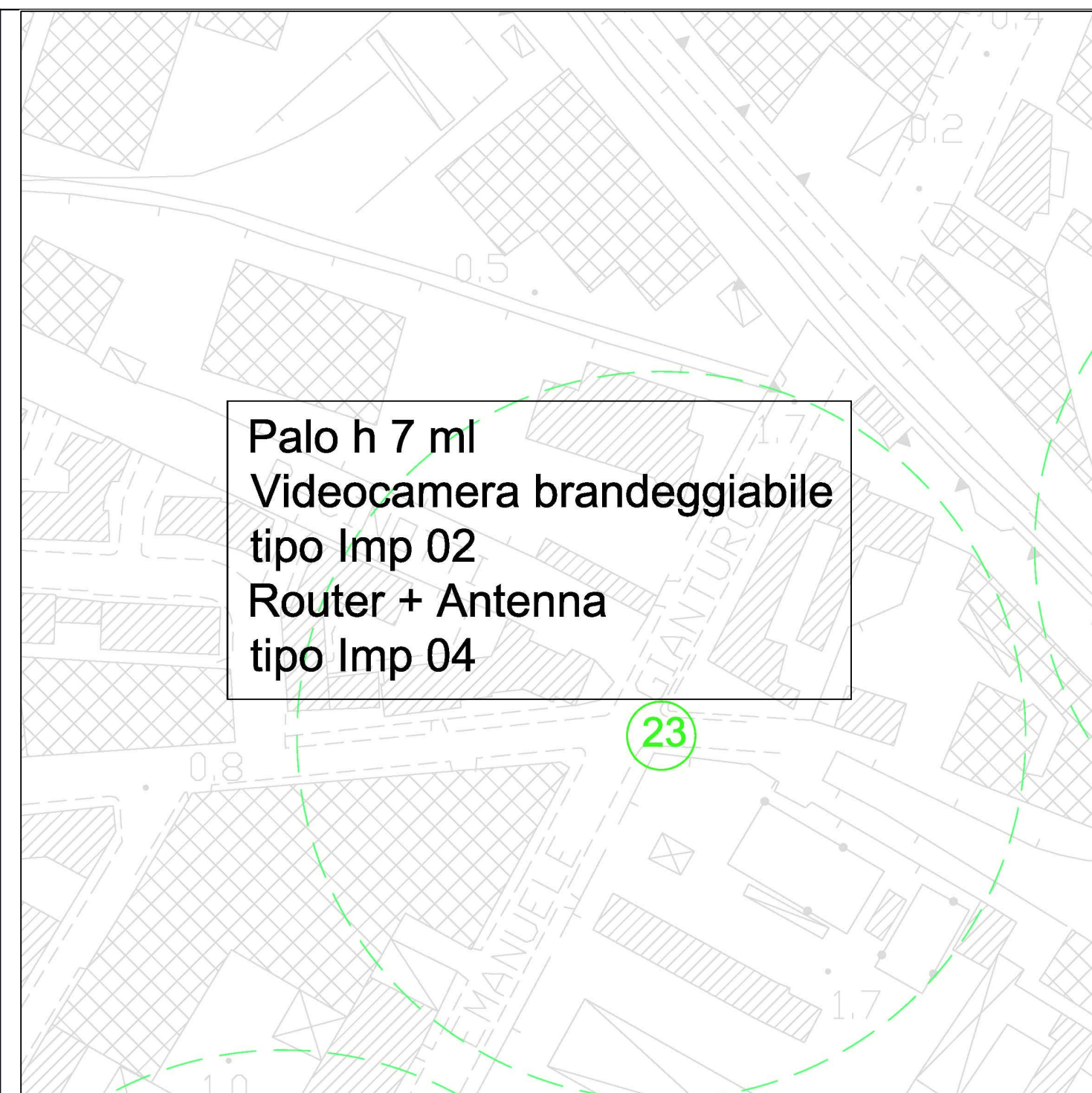




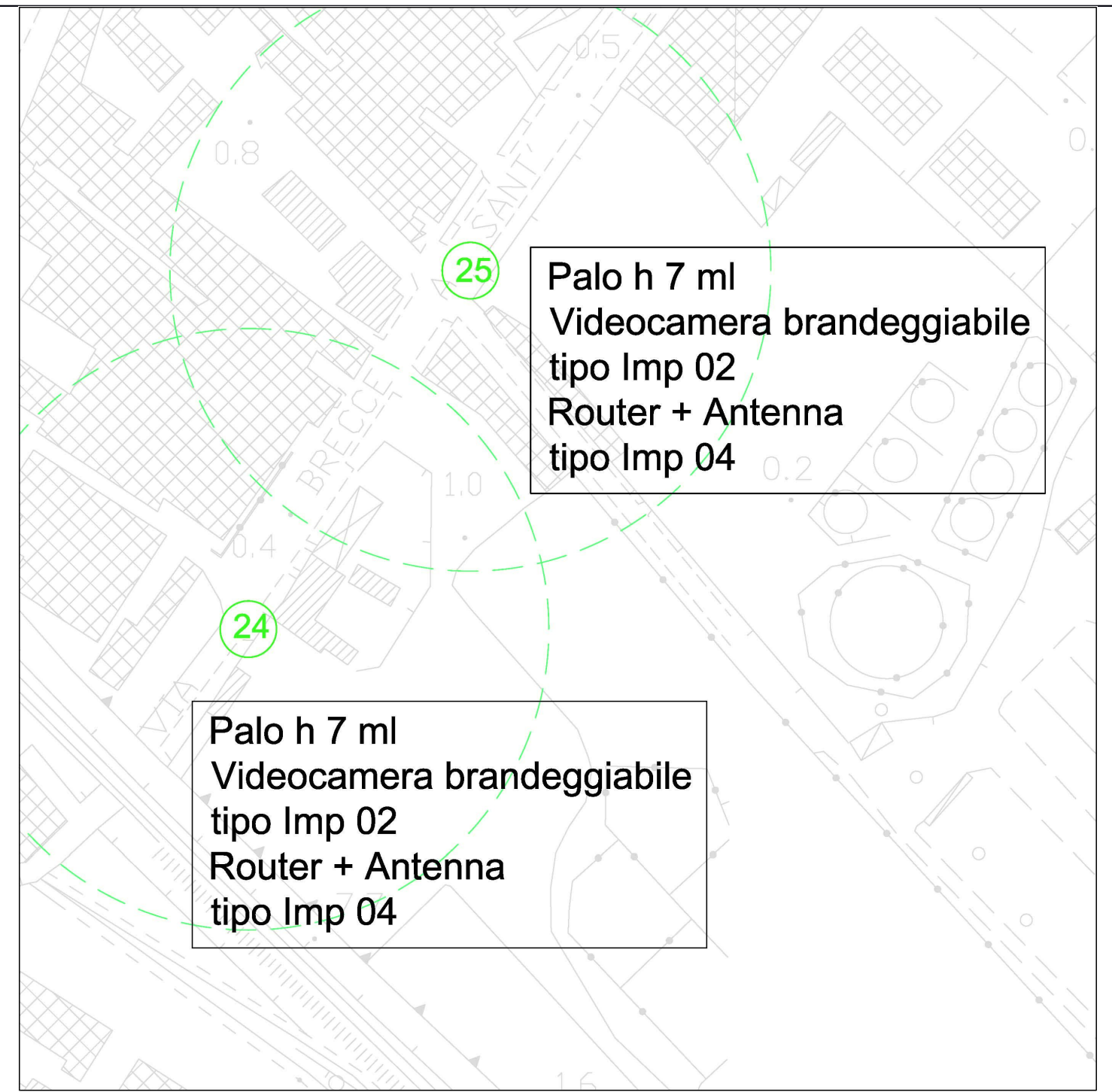




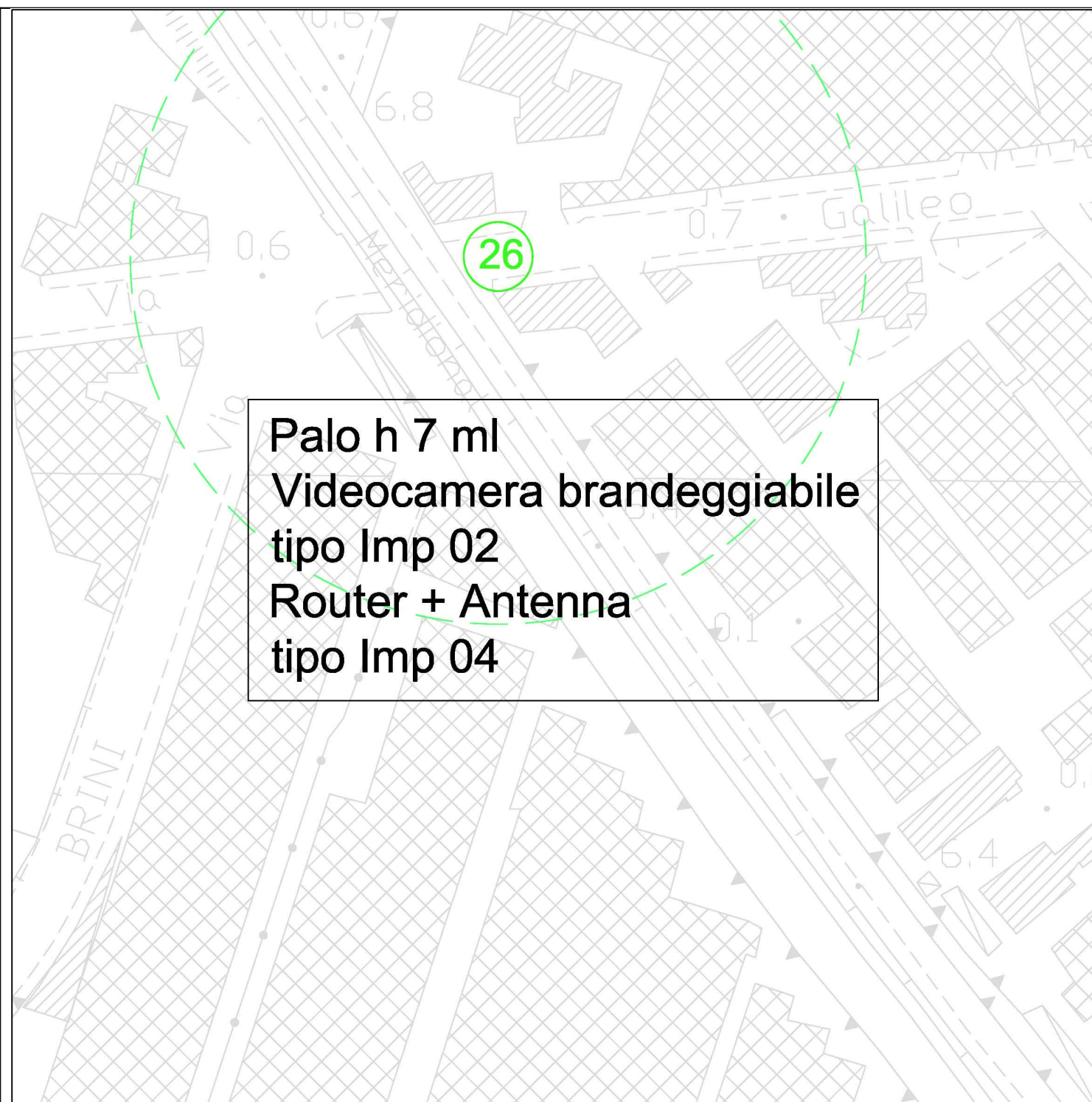






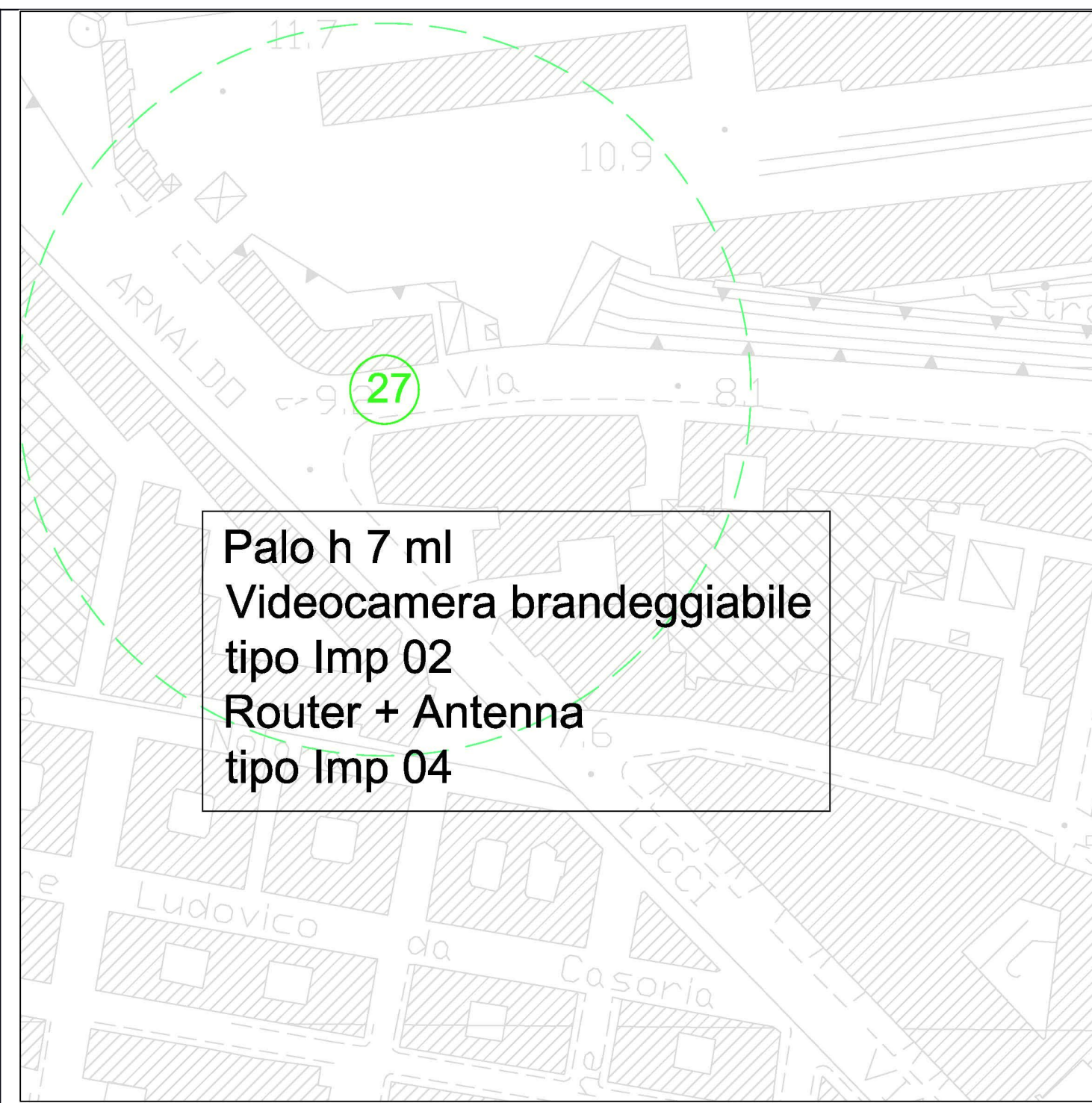






Palo h 7 ml  
Videocamera brandeggiabile  
tipo Imp 02  
Router + Antenna  
tipo Imp 04





Palo h 7 ml  
 Videocamera brandeggiabile  
 tipo Imp 02  
 Router + Antenna  
 tipo Imp 04



