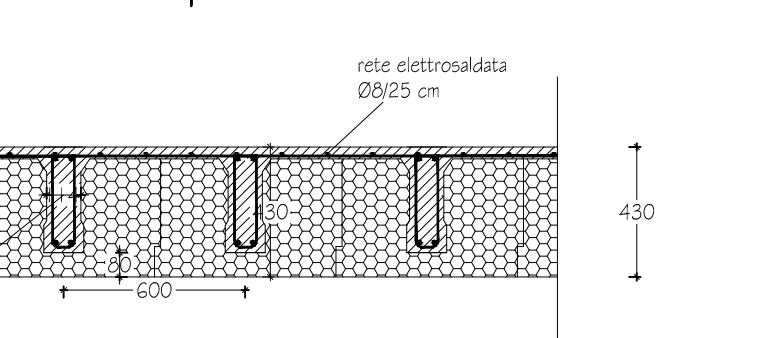
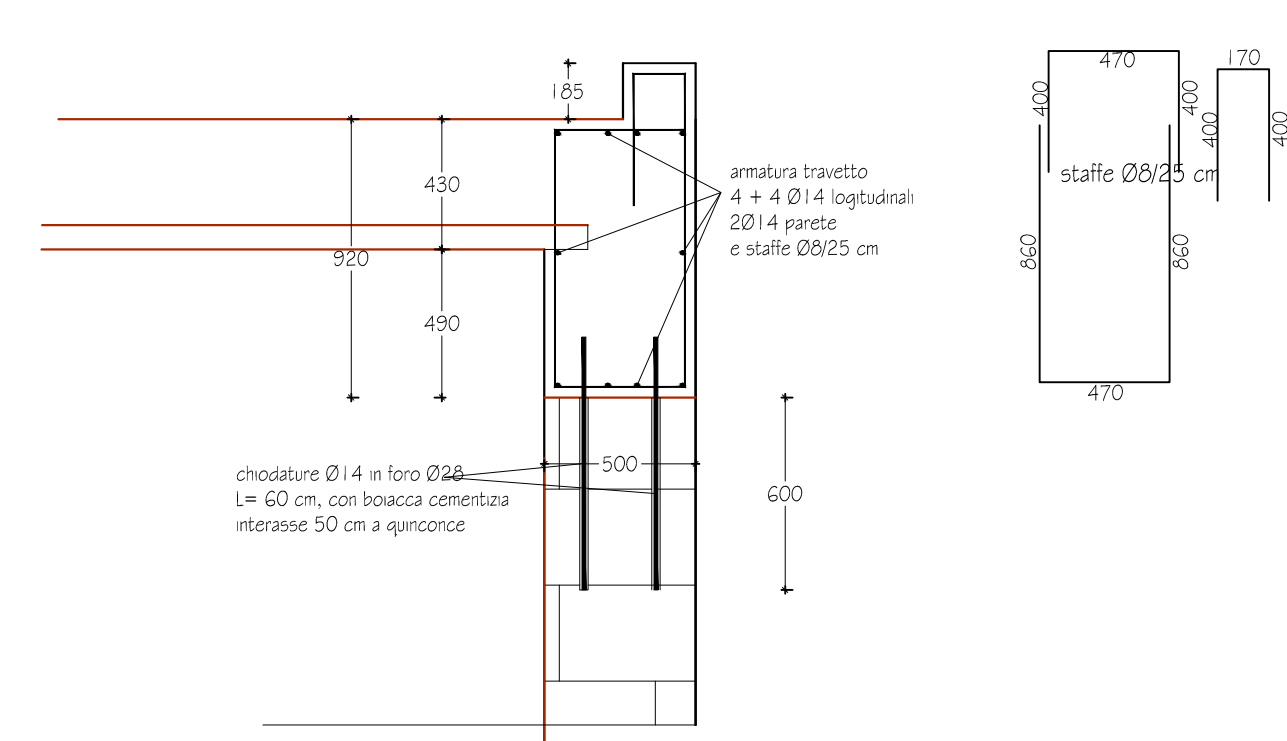


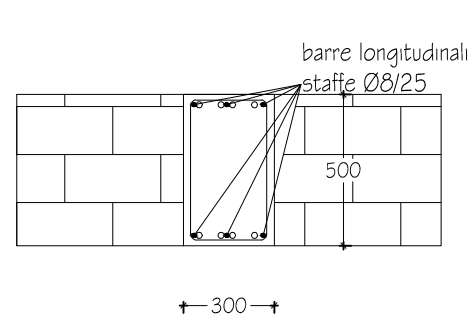
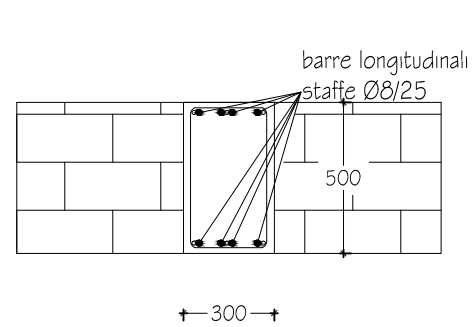
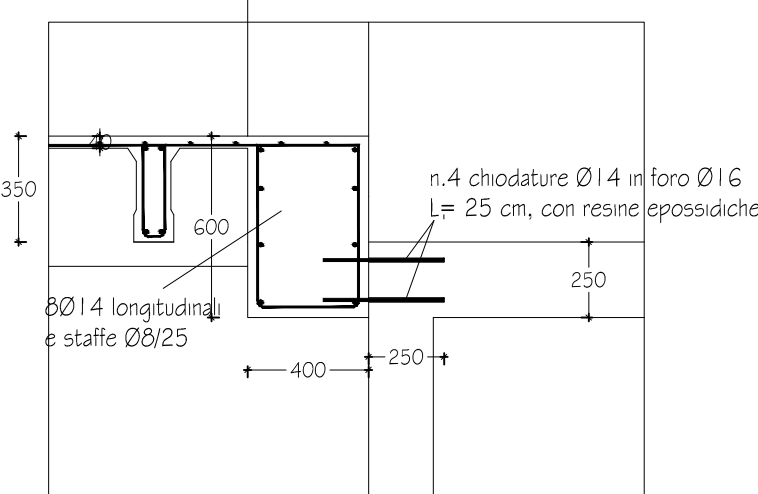
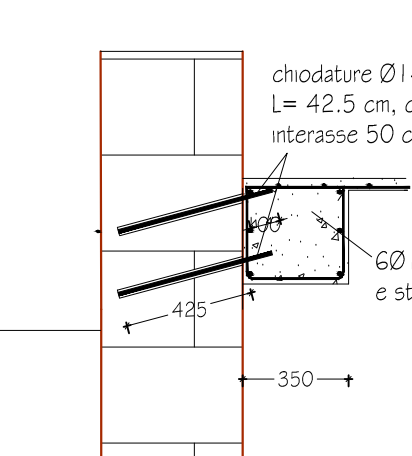
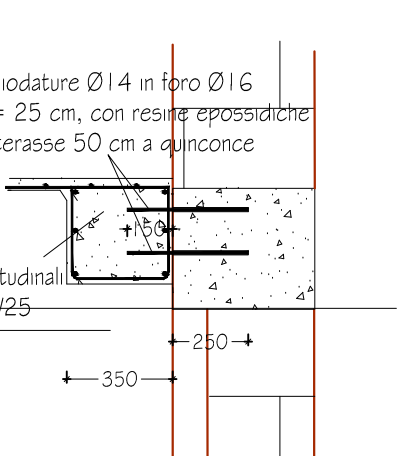
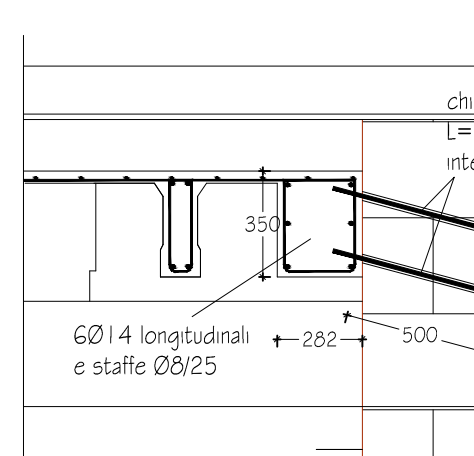
Sezioni scala 1/100



Particolare I



53872c7-c7c70a0555020ac276c7c7c205071a061.jpg.jpg



B

sistema di armatura costituita da Ø20/20 longitudinali e staffe Ø8/25 cm

540

C

barre longitudinali Ø14 in ferro Ø16
L= 25 cm, con minore epessore
piastre di ancoraggio Ø14
50x50x10 mm
salutatore tonda a testa

600

220

B

C

corona e
piastre rivestite

[illegible]